



**Specifications**

Rating: 5-24VADC/1A Pulse Mode.  
 Operating Life: 50 Million cycles min.  
 Contact Resistance: 1Ω MAX.  
 Operating Temperature: -20°C to 65°C.

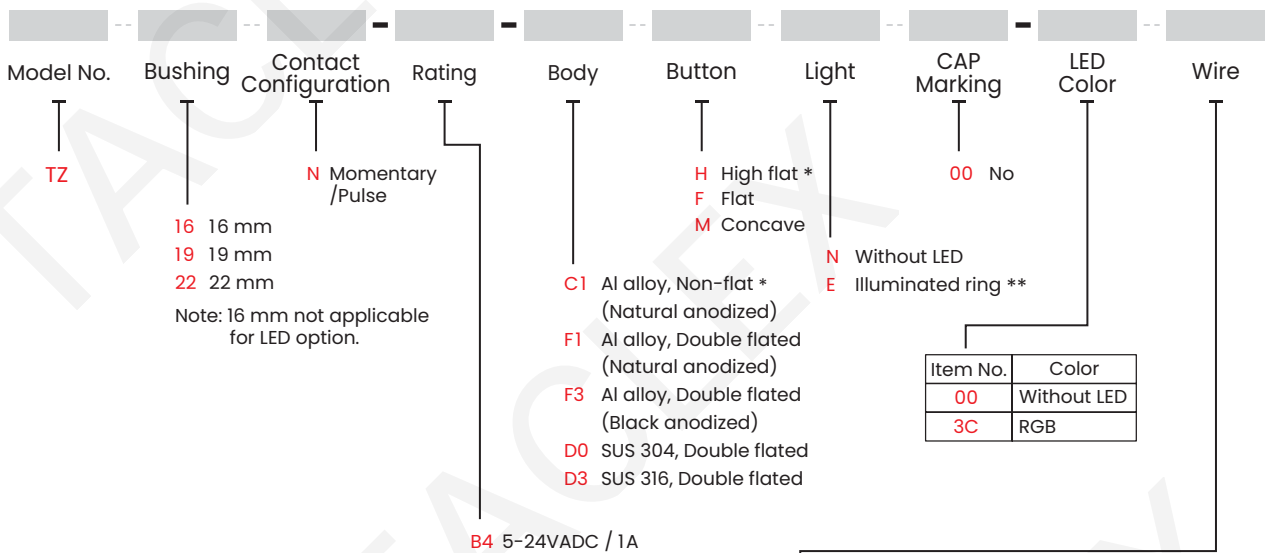
Ingree Protection: IP68 (In house test)



**Materials**

Bushing: Aluminum Alloy / Stainless Steel.  
 CAP: PC ; Aluminum alloy / Stainless steel.  
 Sealing: Silicone, Epoxy.  
 O-Ring: Silicone.  
 Hex Nut: Nickel plated brass.  
 Wire: Standard wire 26 AWG.

**HOW TO ORDER**



Available with TZ16 model only  
**D301** 150 mm+2.54 1x2 Connector (Std.)  
**D302** 300 mm+2.54 1x2 Connector

Available with TZ19 / TZ22 model only  
**D101** 150 mm+2.54 1x6 Connector (Std.)  
**D102** 300 mm+2.54 1x6 Connector

Note: Please consult sales for additional wire options.

**EXAMPLE:**

TZ16N-B4-□ HN00-00D301  
 Body options

TZ19N-B4-□ FE00-3CD101  
 Body options

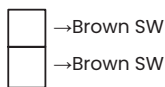
\* For model type TZ16 only.  
 \*\* For model types TZ19 and TZ22 only.



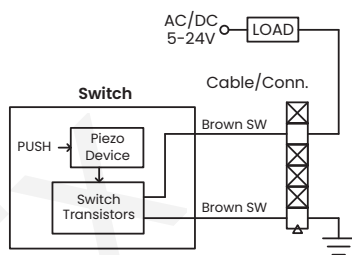
### ▼ CIRCUIT

#### 00 Without LED application diagram

TZ16 model

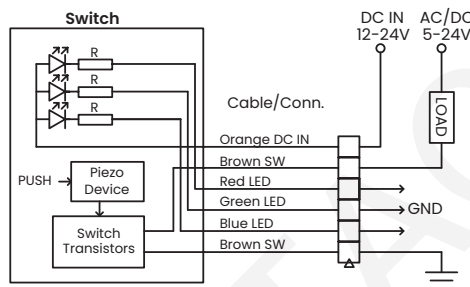


TZ19 and TZ22 models



#### 3C RGB LED application diagram

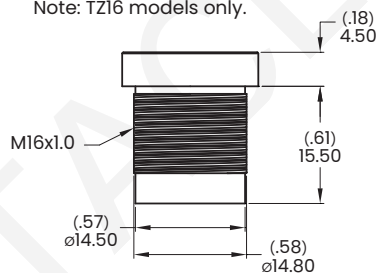
Note: Available with TZ19 and TZ22 models only.



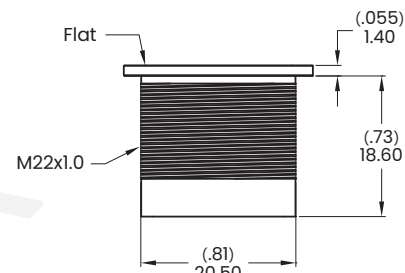
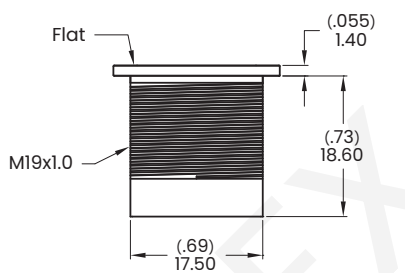
### ▼ BUTTON OPTIONS

#### H High flat, No LED

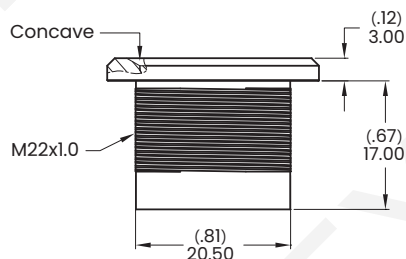
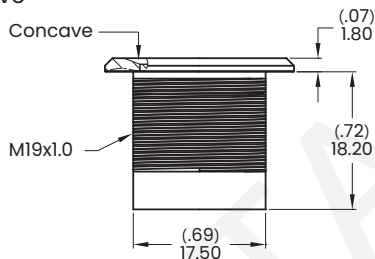
Note: TZ16 models only.



#### F Flat

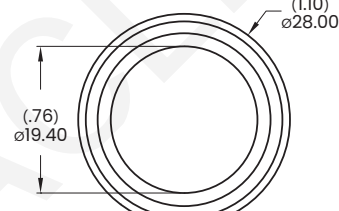
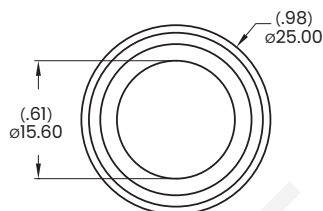
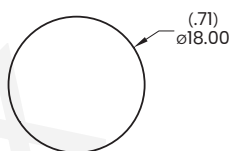


#### M Concave

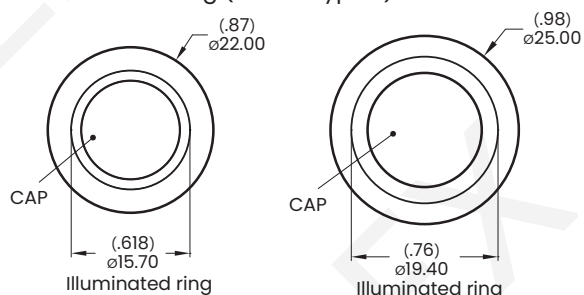


### ▼ LIGHT OPTIONS

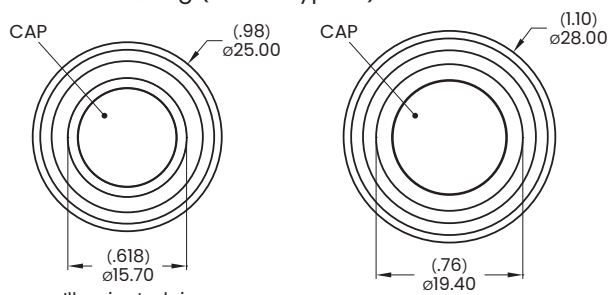
#### N Without LED



#### E Illuminated ring (Button type F)

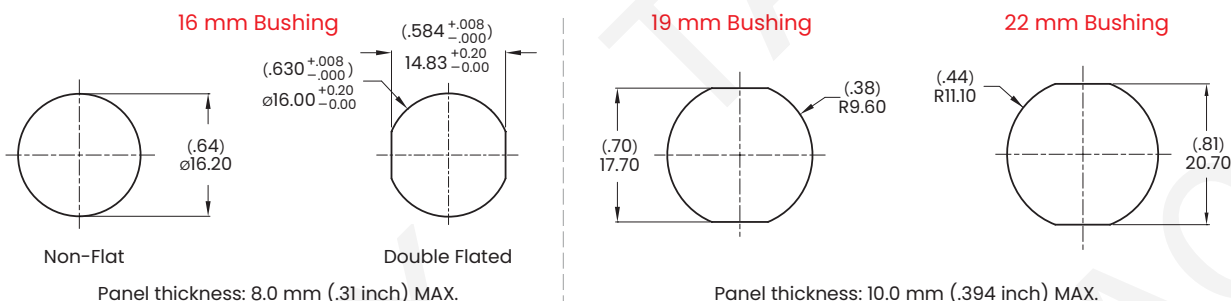


#### E Illuminated ring (Button type M)



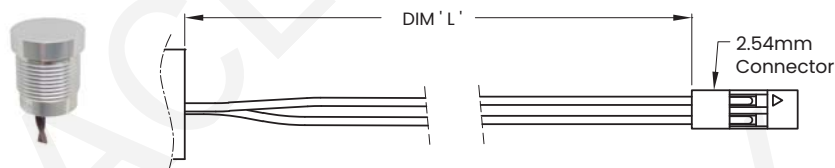


### ▼ PANEL MOUNTING



### ▼ WIRE OPTIONS

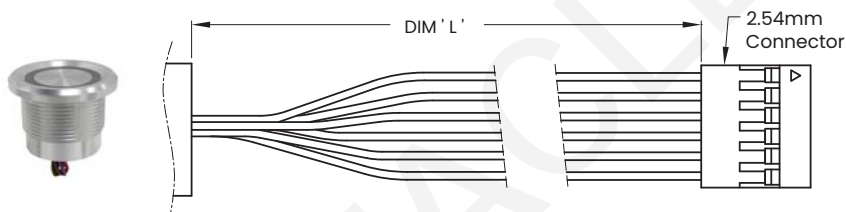
**D30X** Wire leads, 26 AWG  
Note: Available with TZ16 Model only.



Wires:	Code	DIM 'L'
	D301	150 mm
	D302	300 mm

Note: No Illumination: Brown Wires.

**D10X** Wire leads, 26 AWG  
Note: Available with TZ19 and TZ22 Models only.



Wires:	Code	DIM 'L'
	D101	150 mm
	D102	300 mm

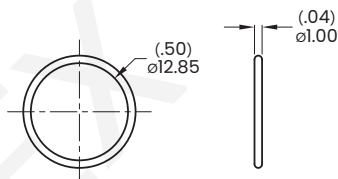
Orange wire - DC IN  
Brown wire - SW (Q'TY 2)  
Red wire - Red LED  
Green wire - Green LED  
Blue wire - Blue LED

### ▼ HARDWARE

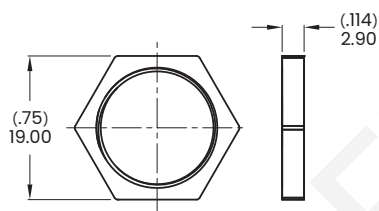
- \* Standard hardware : 1 Nut, 1 O-Ring
- \* For further information please consult sales representative.

Available with bushing 16 only

**O-Ring**  
Model name. FCP-MP602

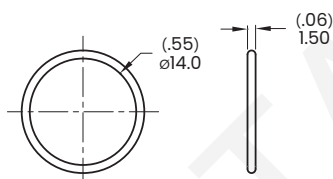


**Hex Nut**  
Model name. MNU-PY01

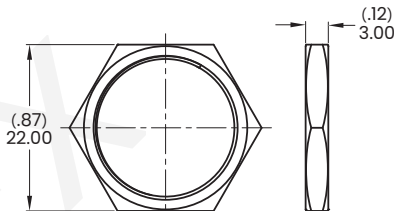


Available with bushing 19 only

**O-Ring**  
Model name. FCP-PY02

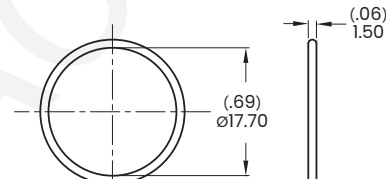


**Hex Nut**  
Model name. MNU-MPB01

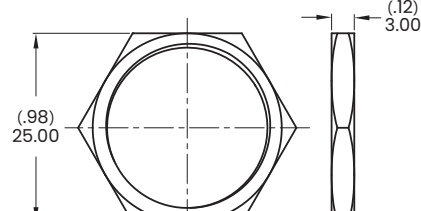


Available with bushing 22 only

**O-Ring**  
Model name. FCP-MPB07



**Hex Nut**  
Model name. MNU-MPB02





TZ (Lock)  
Piezo Switches

### Specifications

Rating: 5-24VADC / 1A Lock Mode.  
 Power: 5-24V DC.  
 Indicator: 5-24V DC.  
 Operating Life: 50 Million cycles min.  
 Contact Resistance: 1 Ω MAX.  
 Operating Temperature: -20°C to 65°C.

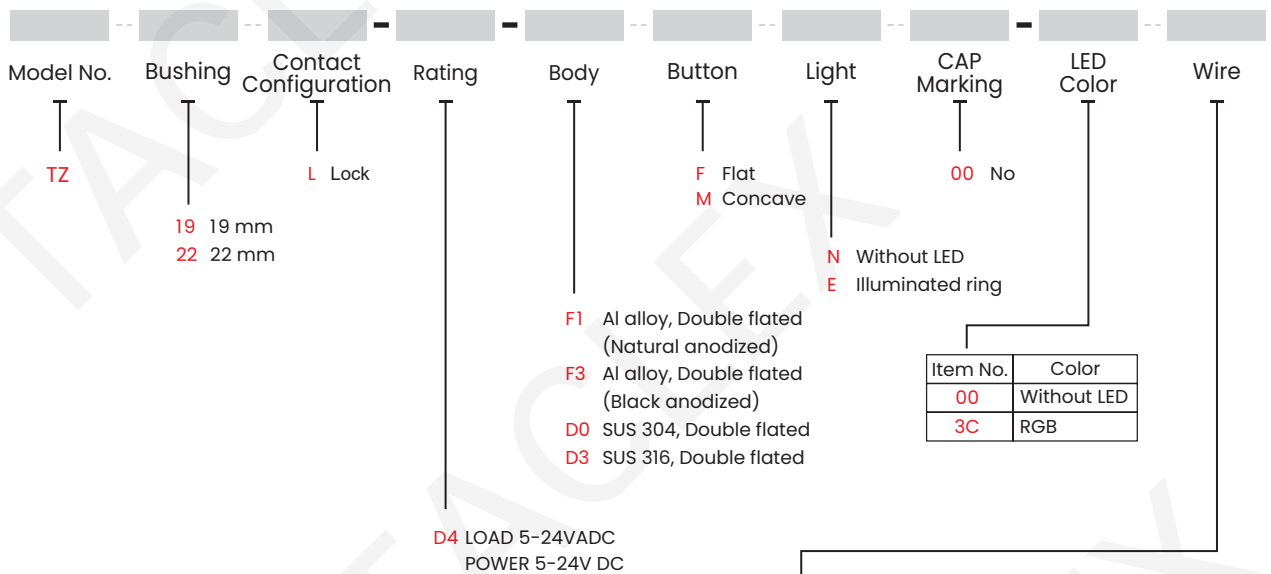
Ingree Protection: IP68 (In house test)



### Materials

Bushing: Aluminum alloy / Stainless steel.  
 CAP: PC ; Aluminum alloy / Stainless steel.  
 Sealing: Silicone, Epoxy.  
 O-Ring: Silicone.  
 Hex Nut: Nickel plated brass.  
 Wire: Standard wire 26 AWG.

## HOW TO ORDER



D101 26AWG 150 mm+2.54 1x6 Connector are only available without LED.

#### With LED

DB01 26AWG 150 mm+2.54 2x4 Connector for model type TZ19L only.

DA01 26AWG 150mm+2.54 1x8 Connector for model type TZ22L only.

Note: Please consult sales for additional wire options.

#### EXAMPLE:

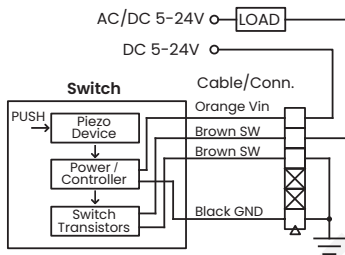
TZ19L-D4-□FN00-00D101  
 Body options

TZ19L-D4-□FE00-3CDB01  
 Body options

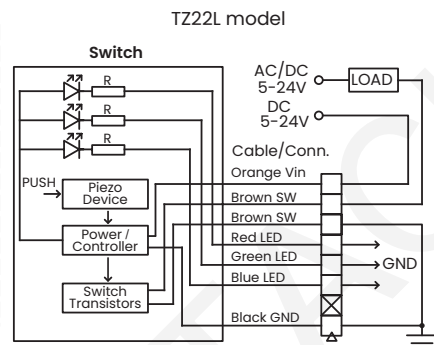
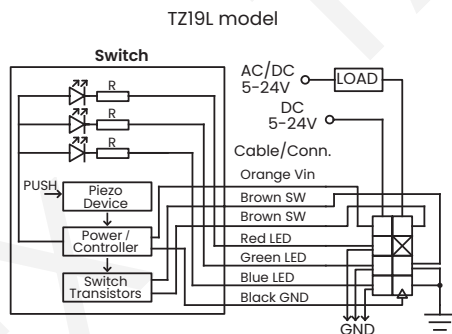


▼ **CIRCUIT**

**00** Without LED application diagram



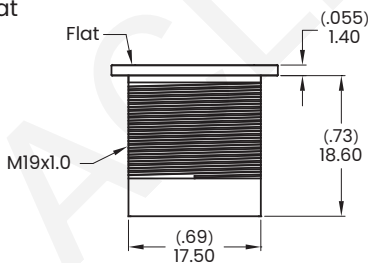
**3C** RGB LED application diagram



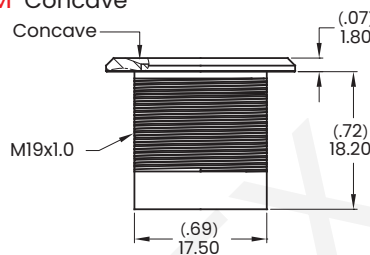
TZ (Lock)  
Piezo Switches

▼ **BUTTON OPTIONS AND PANEL MOUNTING**

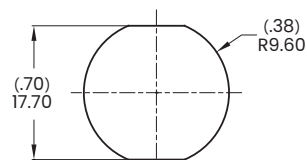
**F** Flat



**M** Concave

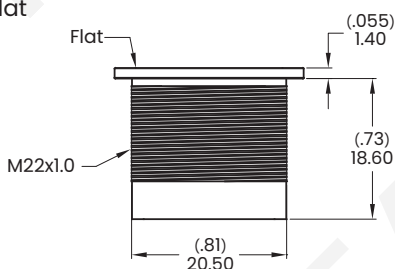


19 mm Bushing

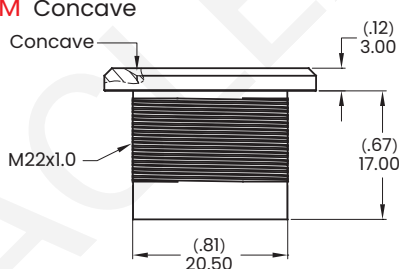


Panel thickness:  
10.0 mm (.394 inch) Max.

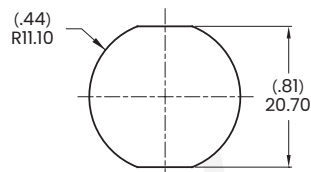
**F** Flat



**M** Concave



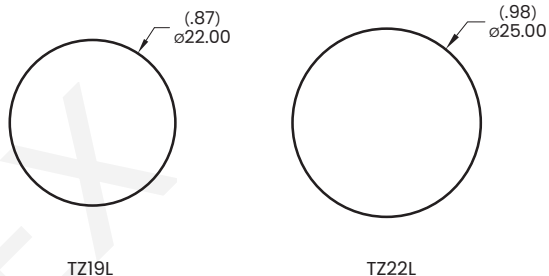
22 mm Bushing



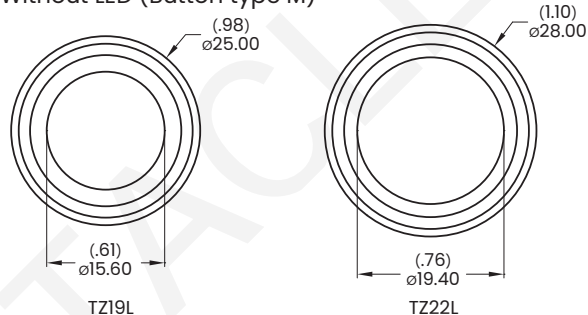
Panel thickness:  
10.0 mm (.394 inch) Max.

▼ **LIGHT OPTIONS**

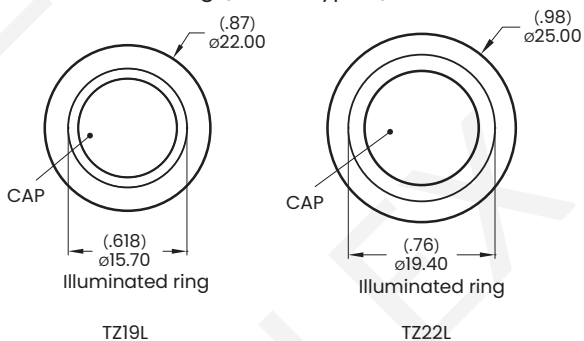
**N** Without LED (Button type F)



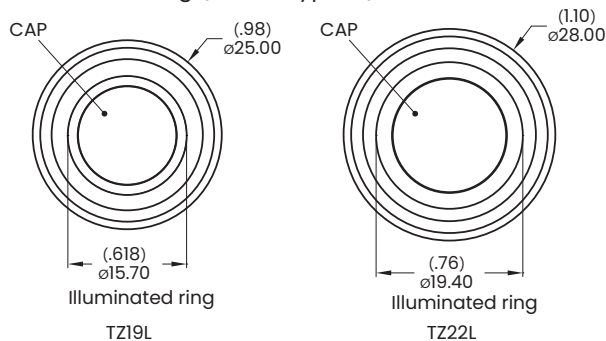
**N** Without LED (Button type M)



**E** Illuminated ring (Button type F)



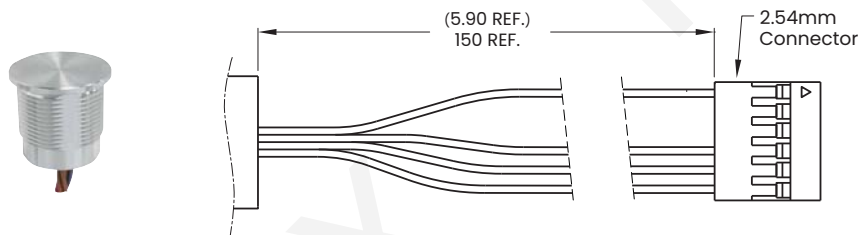
**E** Illuminated ring (Button type M)





### ▼ WIRE OPTIONS

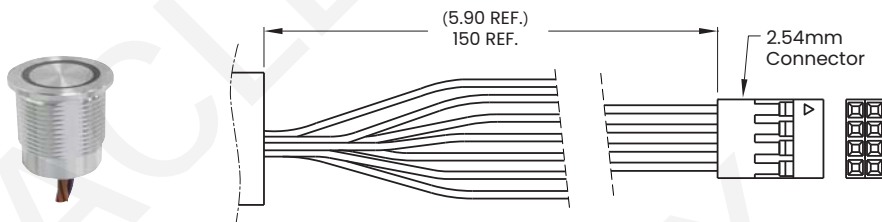
#### D101 Wire leads, 26 AWG (Without LED)



Wires:  
 Orange wire - Vin  
 Brown wire - SW (Q'TY 2)  
 Black wire - GND

#### DB01 Wire leads, 26 AWG

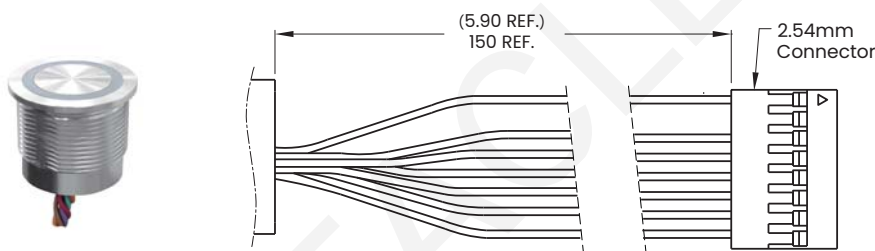
Note: Available with TZ19L Model only.



Wires:  
 Orange wire - Vin  
 Brown wire - SW (Q'TY 2)  
 Red wire - Red LED  
 Green wire - Green LED  
 Blue wire - Blue LED  
 Black wire - GND

#### DA01 Wire leads, 26 AWG

Note: Available with TZ22L Model only.



Wires:  
 Orange wire - Vin  
 Brown wire - SW (Q'TY 2)  
 Red wire - Red LED  
 Green wire - Green LED  
 Blue wire - Blue LED  
 Black wire - GND

### ▼ HARDWARE

\* Standard hardware : 1 Nut, 1 O-Ring

\* For further information please consult sales representative.

Available with bushing 19 only

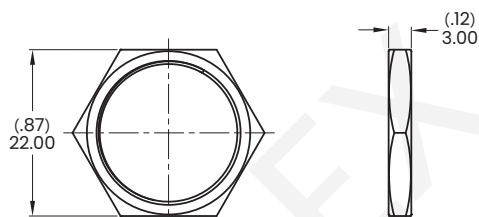
#### O-Ring

Model name. FCP-PY02



#### Hex Nut

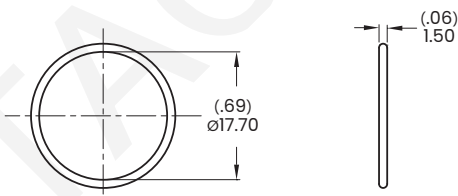
Model name. MNU-MPB01



Available with bushing 22 only

#### O-Ring

Model name. FCP-MPB07



#### Hex Nut

Model name. MNU-MPB02

