

TACT SWITCH
T6W SERIES

6x6 Long Travel SMT
Washable Type



FEATURES

- ※ J or M terminations
- ※ Long Travel type
- ※ Long operating cycles
- ※ IP67

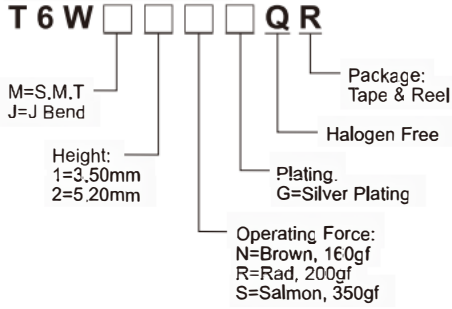
APPLICATION

- ※ Automotive
- ※ Industrial electronics
- ※ Network infrastructure and IT
- ※ Elevator

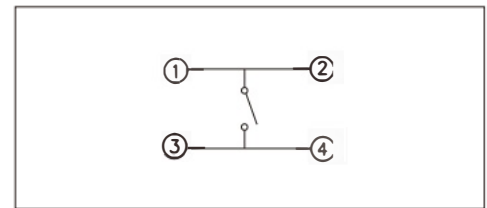
SPECIFICATION

| | |
|-----------------------|--|
| Contact Rating | 20mV DC~32V DC/1.0 mA~5C mA |
| Contact Resistance | 100mΩ max. |
| Insulation Resistance | 10MΩ min. 100V DC |
| Dielectric Strength | 250V AC/1 minute |
| Operating Force | 160±50gf, Brown(N) 200±50gf, Rad(R) 350±100gf, Salmon(S) |
| Travel | 0.3mm (160gf) 0.35mm (200gf) 0.5mm (350gf) |
| Operating Life | 300,000 cycles (350gf) 500,000 cycles (200gf) 5,000,000 cycles (160gf) |
| Operating Temp. | -40°C ~ +85°C |
| Storage Temp. | -55°C(1C days) ~ +85°C(4 days) |

HOW TO ORDER



CIRCUIT

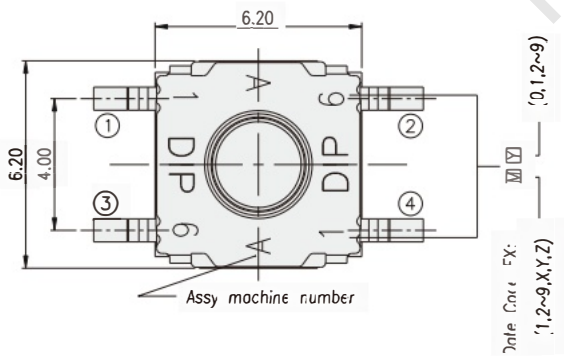


PACKAGE

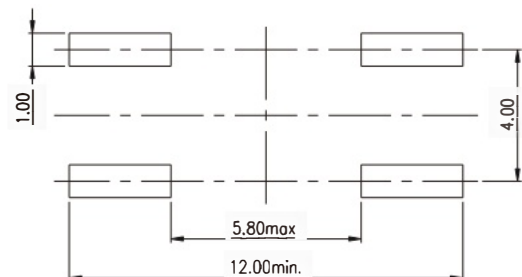
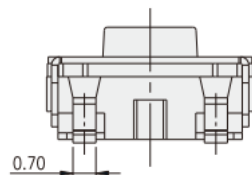
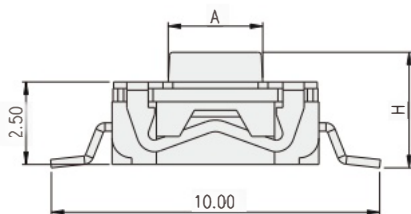
<Tape & Reel>
T6W [] 1: 2000 pcs
T6W [] 2: 1000 pcs

TACT SWITCH

T6WM

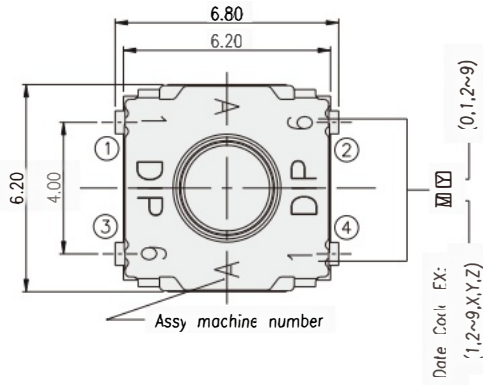


| PART NO | A | H |
|---------|-------|------|
| T6WM1 | ø2.90 | 3.50 |
| T6WM2 | ø2.70 | 5.20 |

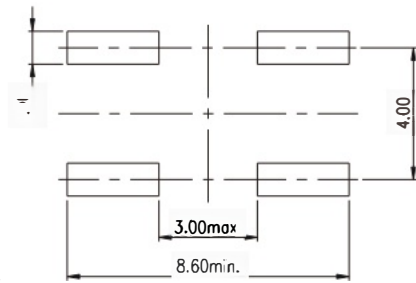
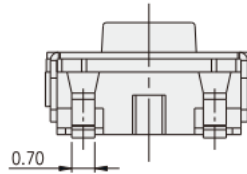
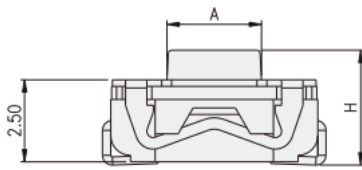


P.C.B. LAYOUT

T6WJ



| PART NO | A | H |
|---------|-------|------|
| T6WJ1 | ø2.90 | 3.50 |
| T6WJ2 | ø2.70 | 5.20 |



P.C.B. LAYOUT