



MPB25 Series

25mm Metal Pushbutton Switches

IP 67
ACCORDING TO
EN 60529:1991+A1:2001
IEC 60529:2001

UL US
E 187490

UL US
E 522188

RoHS
compliant

Pb
lead-free

MPB25
Pushbutton Switches



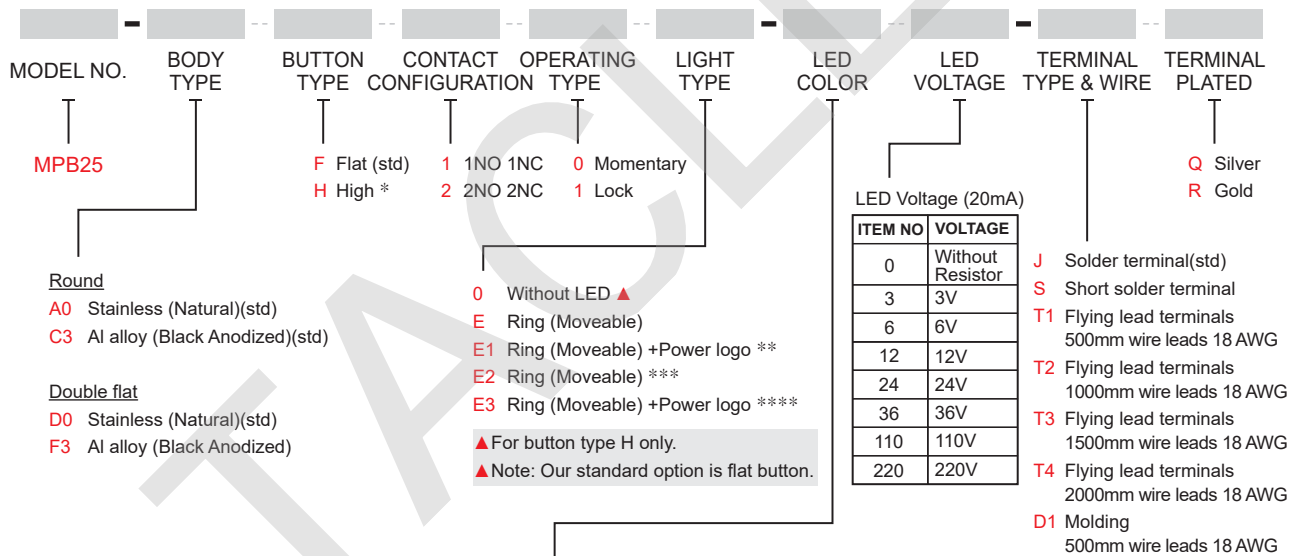
SPECIFICATIONS

- RATING** : 1th 5A/250VAC resistive load 3A/250VAC
- CONTACT RESISTANCE** : 50 mΩ max. @ 1A 12VDC (initial value)
- INSULATION RESISTANCE** : 1,000 MΩ min. at 500VDC
- DIELECTRIC STRENGTH** : 2,000V RMS @ sea level
- OPERATION TEMPERATURE** : -20°C to 55°C
- MECHANICAL LIFE** : Momentary 1,000,000 cycles
Self-lock 500,000 cycles
- ELECTRICAL LIFE** : 50,000 make-and-break cycles at full load
- TORQUE** : 5~14Nm
- OPERATION PRESSURE** : 1Pole 2.5±1N / 2Poles 3.5±1N
- TRAVEL** : About 3.2mm
- INGRESS PROTECTION** : IP67, IK08(Stainless)

MATERIALS

- BUSHING** : Stainless Steel / Aluminum alloy
- BASE** : PBT(UL 94-V0) , PC(UL 94-V2)
- ACTUATOR** : PC; Stainless Steel / Aluminum alloy
- INNER ASSEMBLY** : POM / PA66.
- SPRING** : Spring steel.
- SEALING** : Silicone.
- O-Ring** : Silicone.
- TERMINAL** : Brass, silver or gold plated.
- CONTACT** : Brass, coin silver, silver or gold plated.
- HEX NUT** : Nickel plated brass

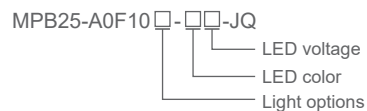
HOW TO ORDER



| ITEM NO | COLOR |
|------------------|--------------|
| Single Color LED | |
| 0 | Without LED |
| 1 | White |
| 3 | Red |
| 5 | Yellow |
| 6 | Green |
| 7 | Blue |
| Dual Color LED | |
| A | Red+Green |
| B | Red+Blue |
| D | Blue+Yellow |
| G | Red+Yellow |
| H | Green+Yellow |
| J | Orange+Green |
| P | Blue+Green |

- * Button type H is only available with aluminum body without LED.
- ** 1. Light type E1 is only available with D0 body type.
2. Only white ring with all led color.
- *** Light type E2 with LED is only available with color red/green/blue and A0 body type.
- **** Light type E3 with LED is only available with color red/green/blue and D0 body type.
- ***** For other colors information please consult sales representative.

EXAMPLE:
MPB25-A0F10E-JQ (Without LED)





▼ **CIRCUIT**

SINGLE POLE

Without LED



Position 1



Position 2

Single Color LED



Position 1



Position 2

Dual Color LED

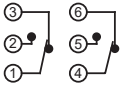


Position 1

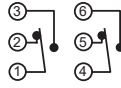


Position 2

DOUBLE POLE



Position 1



Position 2



Position 1



Position 2



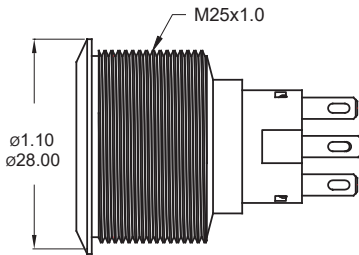
Position 1



Position 2

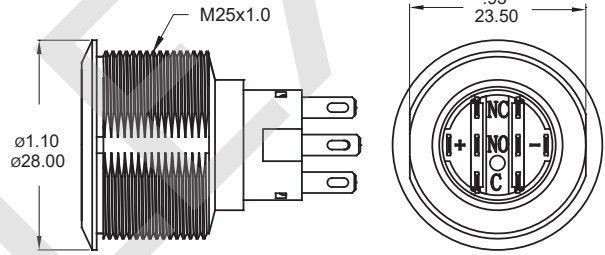
▼ **BODY OPTIONS**

A0 / C3 Round



Note: Not available for light type E1 and E3.

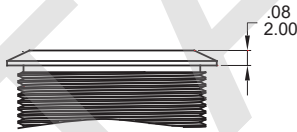
D0 / F3 Double flat



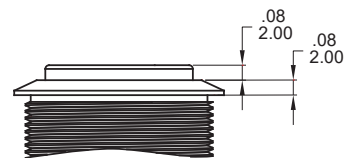
Note: Available with light type E1 and E3 only.

▼ **BUTTON OPTIONS**

F Flat (std)



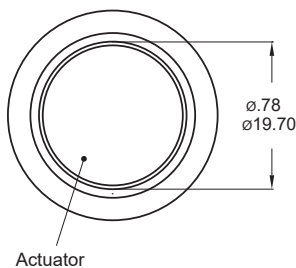
H High, No LED



Note: Only available for aluminum body options.

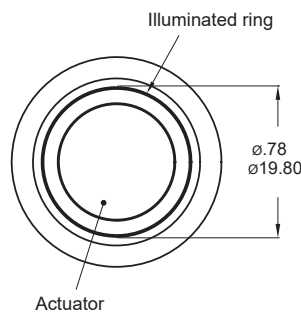
▼ **LIGHT OPTIONS**

0 Without LED

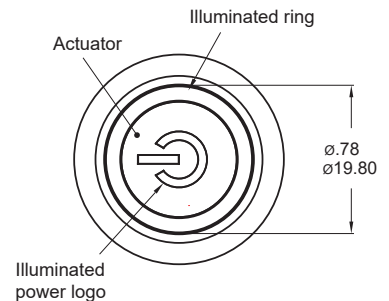


Note: Available with button type H only.

E / E2 Ring (Moveable)



E1 / E3 Ring (Moveable)+Power logo



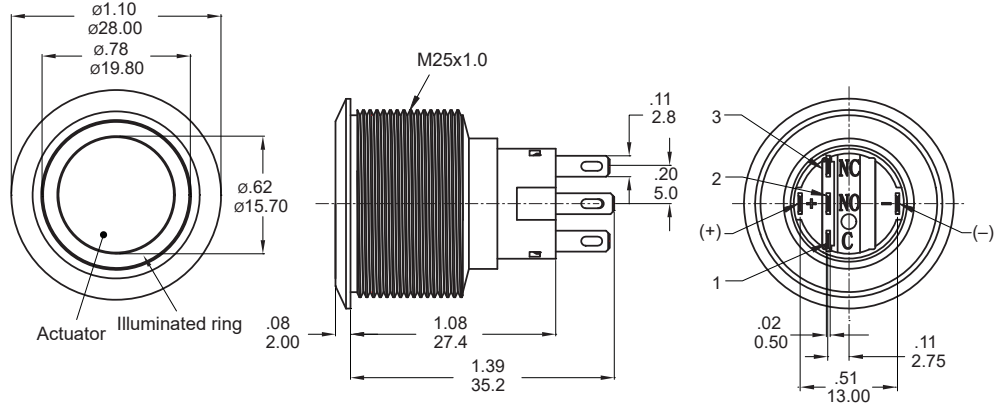
Note: Available with body type D0 only.



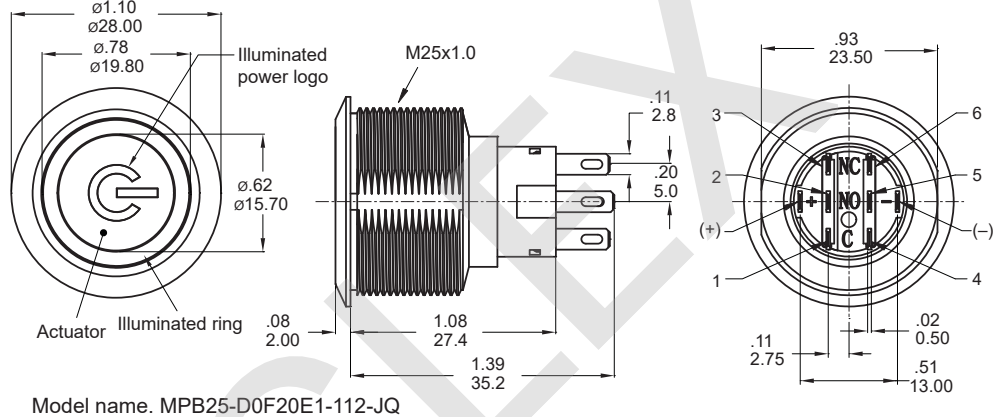
MPB25
Pushbutton Switches

▼ DIMENSION

Flat button

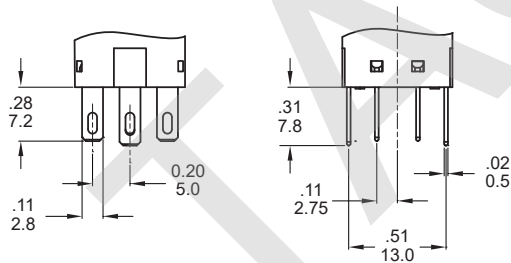


Flat button

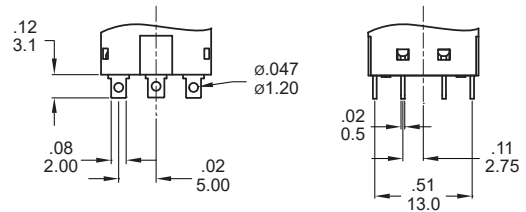


▼ TERMINAL OPTIONS

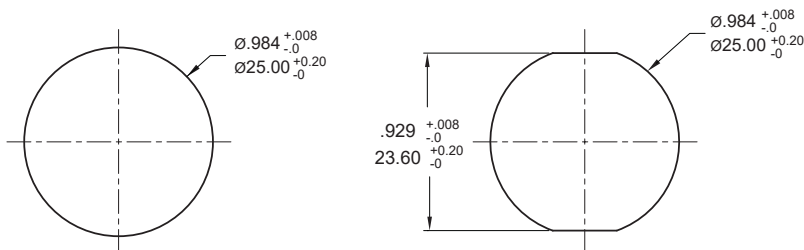
J Solder terminal (std)



S Short solder terminal



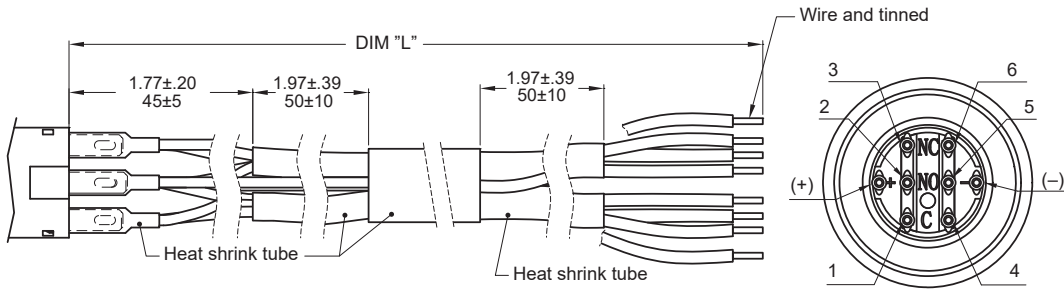
▼ PANEL MOUNTING



Panel thickness:
.394inch(10.0 mm) MAX.

▼ WIRE OPTIONS

TX Wire leads UL3385 18 AWG (Flying lead Terminal)



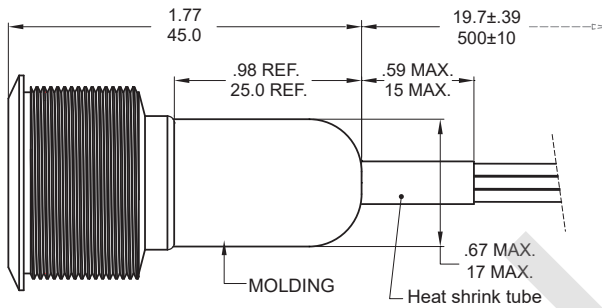
Wires

| CODE | DIM "L" |
|------|---------|
| T1 | 500 |
| T2 | 1000 |
| T3 | 1500 |
| T4 | 2000 |

Units: mm

MPB25 Pushbutton Switches

D1 Molding, 500mm wire leads UL3385 18 AWG



Wires:

- Yellow wire - Terminal 1 and 4
- Purple wire - Terminal 2 and 5
- Green wire - Terminal 3 and 6
- Red wire - LED (+) Positive
- Black wire - LED (-) Negative

* Please consult sales for additional wire options.

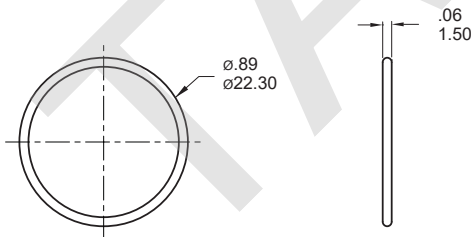
▼ HARDWARE

* Standard hardware : 1 nut, 1 O-ring

* For further information please consult sales representative.

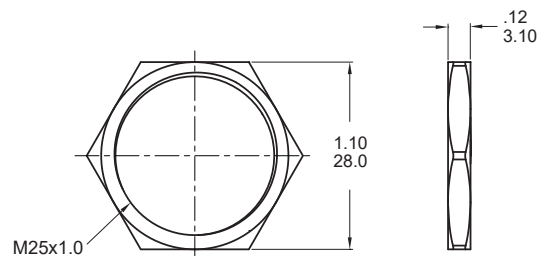
O-RING (Std.)

Model name. FCP-MPB25



NUT (Std.)

Model name. MNU-MPB03



▼ O-RING INSTALLATION

