



# MPB22 Series

## 22mm Metal Pushbutton Switches



MPB22  
Pushbutton Switches



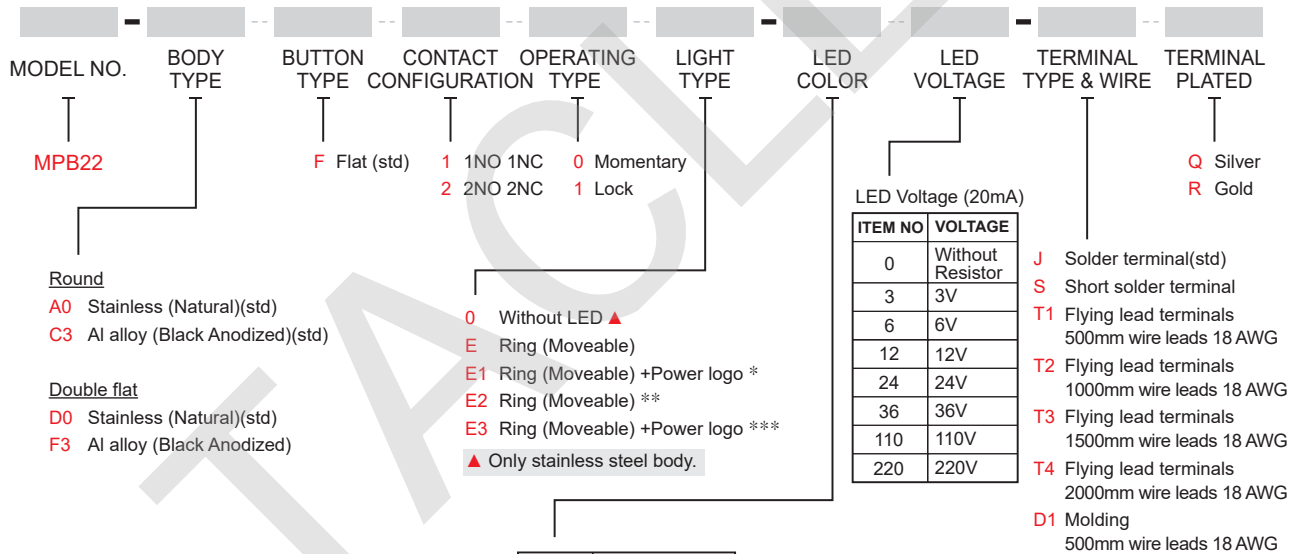
### SPECIFICATIONS

- RATING** : 1th 5A/250VAC resistive load 3A/250VAC
- CONTACT RESISTANCE** : 50 mΩ max. @ 1A 12VDC (initial value)
- INSULATION RESISTANCE** : 1,000 MΩ min. at 500VDC
- DIELECTRIC STRENGTH** : 2,000V RMS @ sea level
- OPERATION TEMPERATURE** : -20°C to 55°C
- MECHANICAL LIFE** : Momentary 1,000,000 cycles  
Self-lock 500,000 cycles
- ELECTRICAL LIFE** : 50,000 make-and-break cycles at full load
- TORQUE** : 5~14Nm
- OPERATION PRESSURE** : 1Pole 2.5±1N / 2Poles 3.5±1N
- TRAVEL** : About 3.2mm
- INGRESS PROTECTION** : IP67, IK10(Stainless)

### MATERIALS

- BUSHING** : Stainless Steel / Aluminum alloy
- BASE** : PBT(UL 94-V0) , PC(UL 94-V2)
- ACTUATOR** : PC; Stainless Steel / Aluminum alloy
- INNER ASSEMBLY** : POM / PA66.
- SPRING** : Spring steel.
- SEALING** : Silicone.
- O-Ring** : Silicone.
- TERMINAL** : Brass, with silver or gold plated.
- CONTACT** : Brass, coin silver, with silver or gold plated
- HEX NUT** : Nickel plated brass

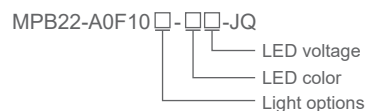
## HOW TO ORDER



ITEM NO	COLOR
Single Color LED	
0	Without LED
1	White
3	Red
5	Yellow
6	Green
7	Blue
Dual Color LED	
A	Red+Green
B	Red+Blue
D	Blue+Yellow
G	Red+Yellow
H	Green+Yellow
J	Orange+Green
P	Blue+Green

- \* 1. Light type E1 is only available with D0 body type.  
2. Only white ring with all led color.
- \*\* Light type E2 with LED is only available with color red/green/blue and A0 body type.
- \*\*\* Light type E3 with LED is only available with color red/green/blue and D0 body type.
- \*\*\*\* For other colors information please consult sales representative.

EXAMPLE:  
MPB22-A0F100-JQ (Without LED)



## ▼ CIRCUIT

### SINGLE POLE

Without LED

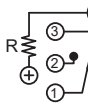


Position 1

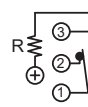


Position 2

Single Color LED

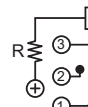


Position 1

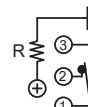


Position 2

Dual Color LED

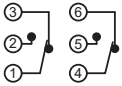


Position 1

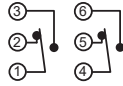


Position 2

### DOUBLE POLE



Position 1



Position 2



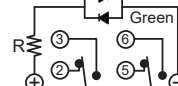
Position 1



Position 2



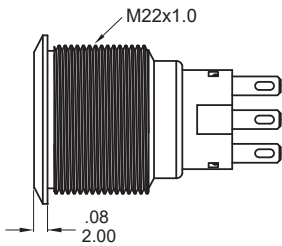
Position 1



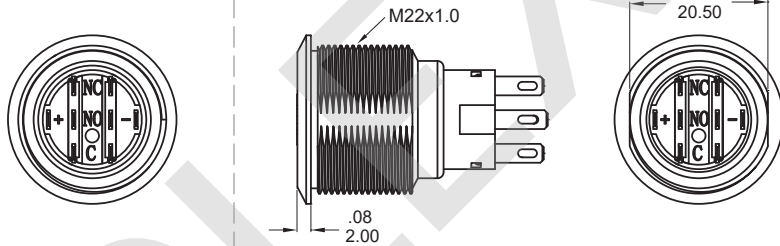
Position 2

## ▼ BODY OPTIONS

### A0 / C3 Round



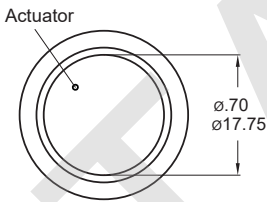
### D0 / F3 Double flat



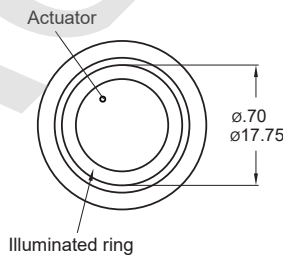
Note: Available with light types E1 and E3 only.

## ▼ LIGHT OPTIONS

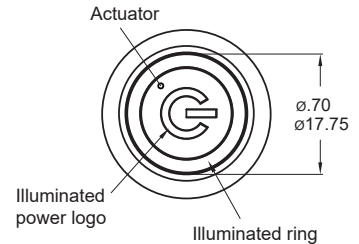
### 0 Without LED



### E / E2 Ring (Moveable)



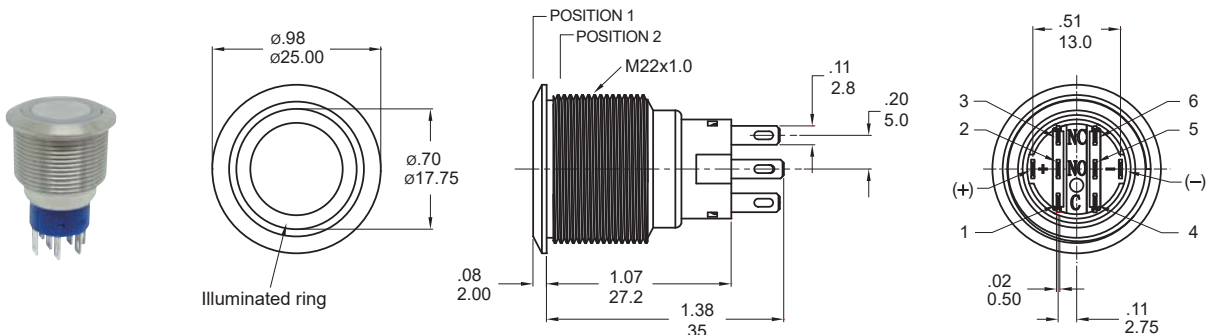
### E1 / E3 Ring (Moveable)+Power logo



Note: Available with double flat body type only.

## ▼ DIMENSION

### Flat button



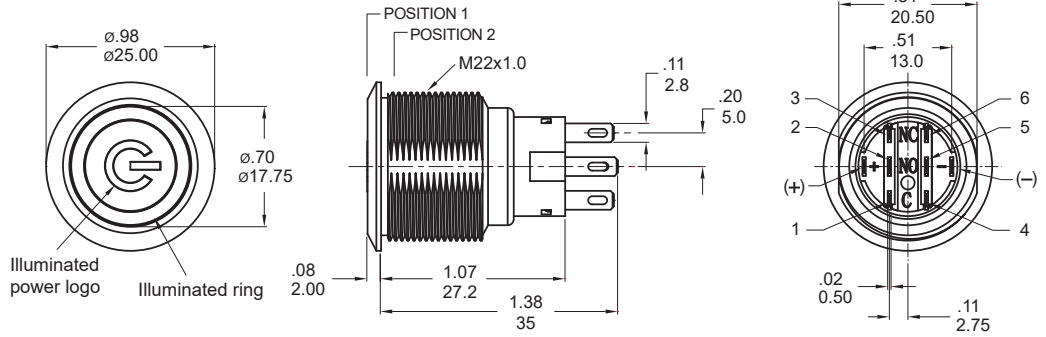
Model name. MPB22-A0F20E-112-JQ



IP 67  
ACCORDING TO  
EN 60529:1991+A1:2001  
IEC 60529:2001



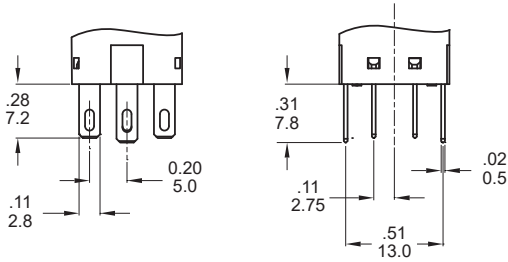
**Flat button**



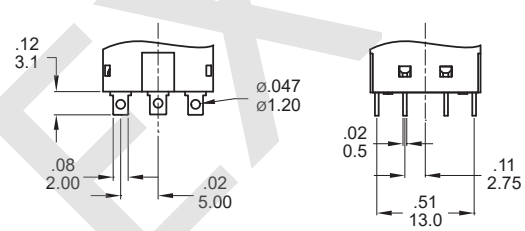
Model name. MPB22-A0F20E1-112-JQ

**▼ TERMINAL OPTIONS**

**J Solder terminal (std)**

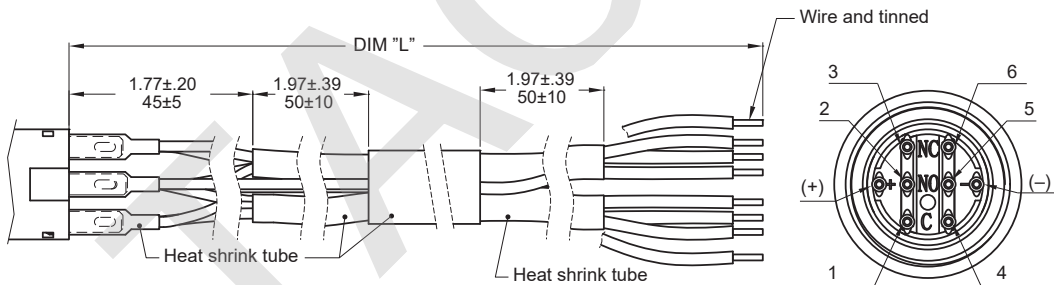


**S Short solder terminal**



**▼ WIRE OPTIONS**

**TX Wire leads UL3385 18 AWG (Flying lead Terminal)**

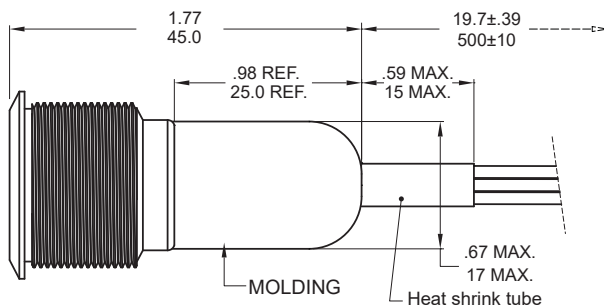


**Wires**

CODE	DIM "L"
T1	500
T2	1000
T3	1500
T4	2000

Units: mm

**D1 Molding, 500mm wire leads UL3385 18 AWG**



**Wires:**

- Yellow wire - Terminal 1 and 4
- Purple wire - Terminal 2 and 5
- Green wire - Terminal 3 and 6
- Red wire - LED (+) Positive
- Black wire - LED (-) Negative

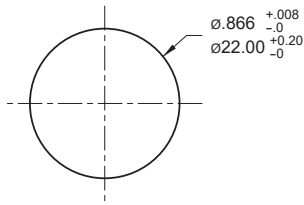
\* Please consult sales for additional wire options.



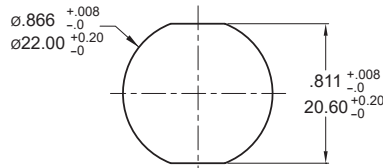
IP 67  
ACCORDING TO  
EN 60529:1991+A1:2001  
IEC 60529:2001



## ▼ PANEL MOUNTING



Round



Double flat

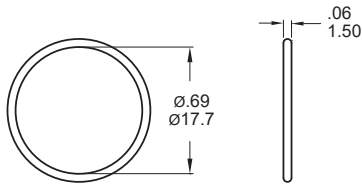
Panel thickness:  
.394inch(10.0 mm) MAX.

## ▼ HARDWARE

- \* Standard hardware : 1 nut, 1 O-ring
- \* For further information please consult sales representative.

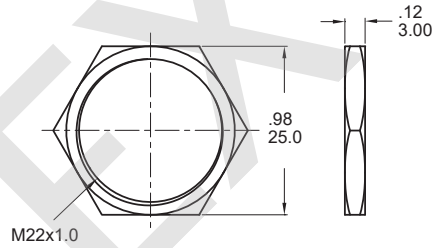
### O-RING (Std.)

Model name. FCP-MPB07



### NUT (Std.)

Model name. MNU-MPB02



## ▼ O-RING INSTALLATION

Proposal	In front of the panel	Behind the panel
Installation Diagram		