

▼ CIRCUIT

SINGLE POLE

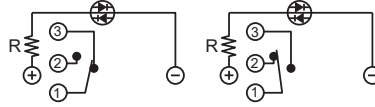
Without LED



Position 1

Position 2

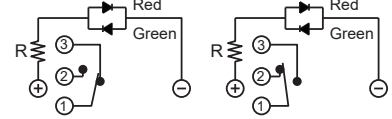
Single Color LED



Position 1

Position 2

Dual Color LED



Position 1

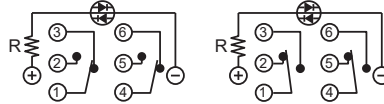
Position 2

DOUBLE POLE



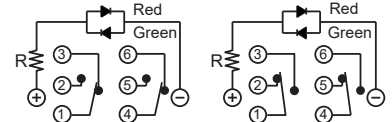
Position 1

Position 2



Position 1

Position 2

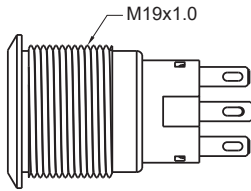


Position 1

Position 2

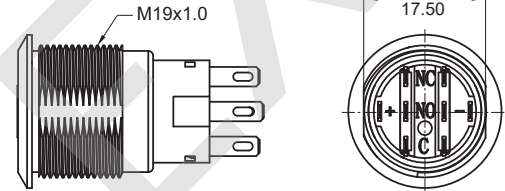
▼ BODY OPTIONS

A0 / B1 / B2 / C3 Round



Note: Not available for light type P and E1.

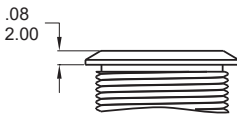
D0 / E1 / E2 / F3 Double flat



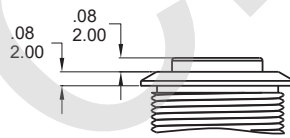
Note: Available with light type P and E1 only.

▼ BUTTON OPTIONS

F Flat (std)

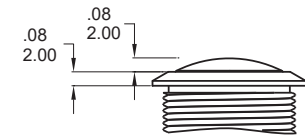


H High



Note: Not available for light type E and E1.

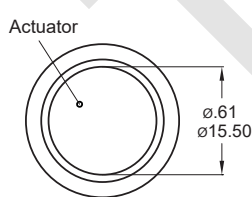
R Round, No LED



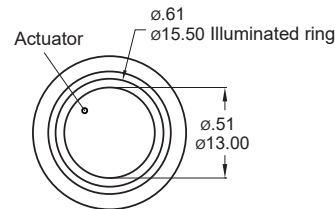
Note: Standard for A0 body type.

▼ LIGHT OPTIONS

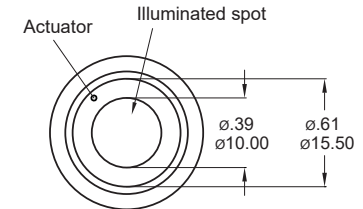
O Without LED



R Ring (Fixed)

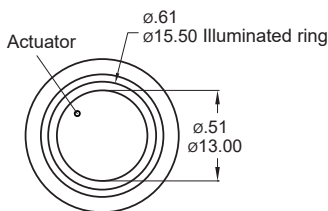


D Spot

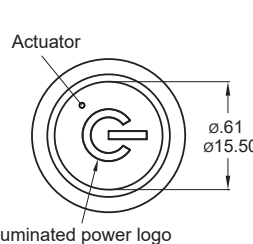


Note: Not available for brass body type.

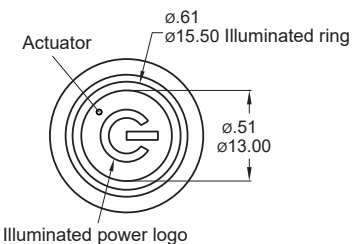
E Ring (Moveable)



P Power logo *



E1 Ring (Moveable)+Power logo *



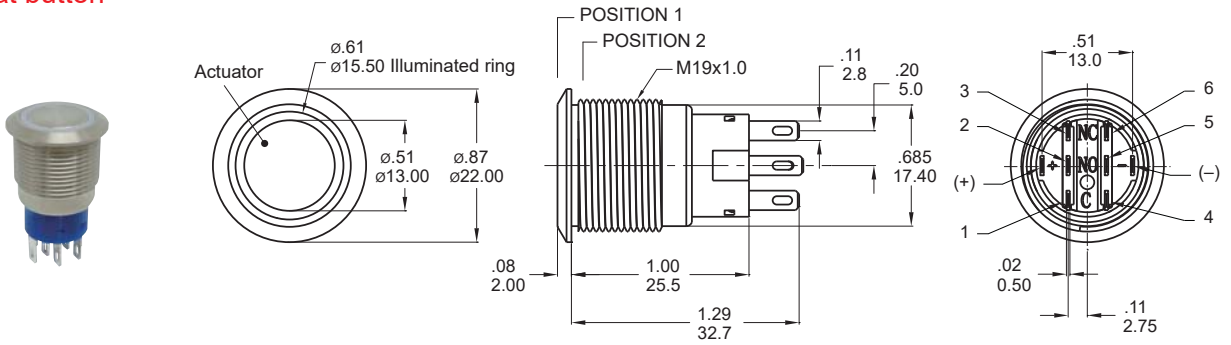
Note: Available with flat button only.

* Note: Available with double flat body type only.



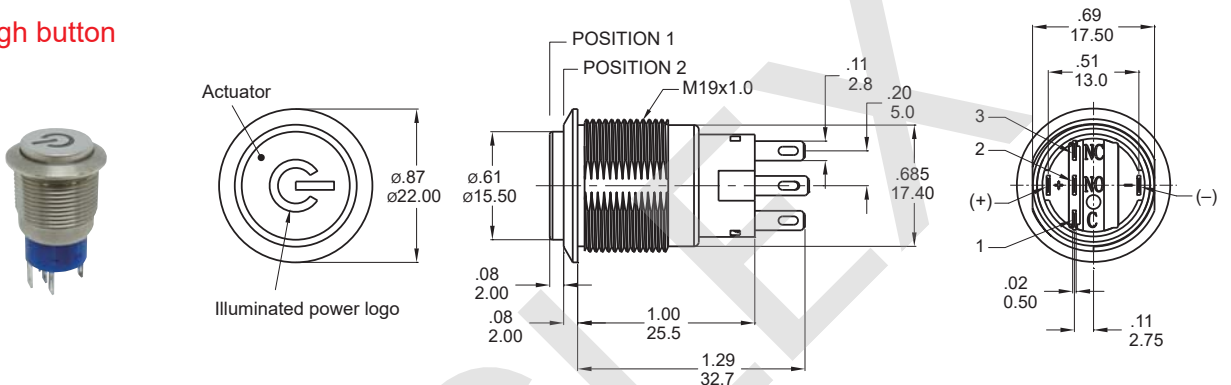
▼ DIMENSION

Flat button



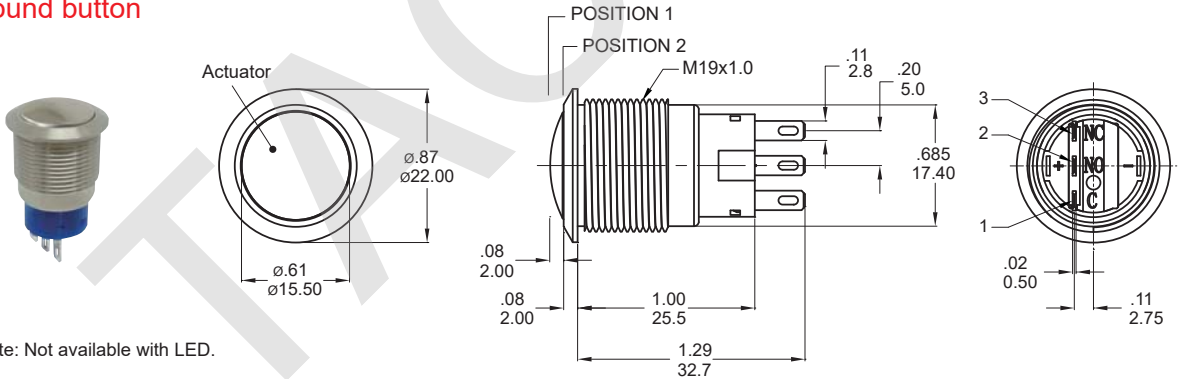
Model name. MPB19-A0F20E-112-JQ

High button



Model name. MPB19-D0H10P-112-JQ

Round button

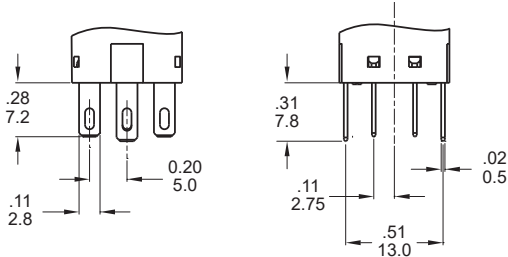


Note: Not available with LED.

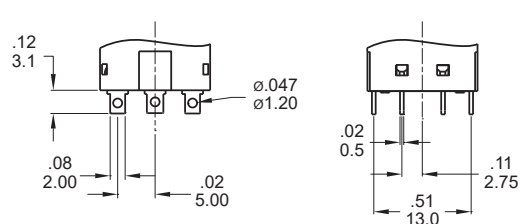
Model name. MPB19-A0R100-JQ

▼ TERMINAL OPTIONS

J Solder terminal (std)

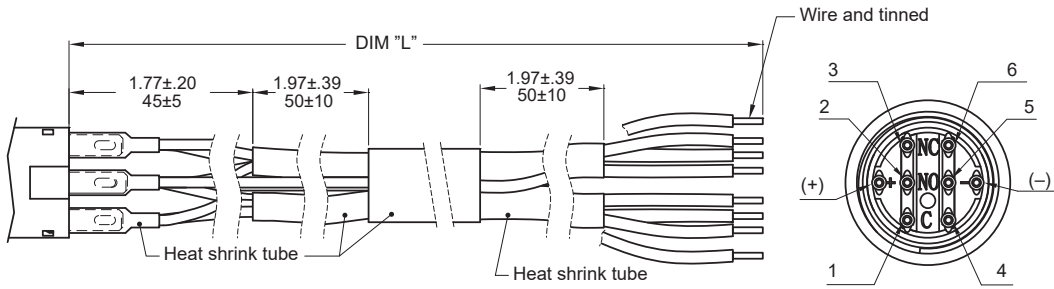


S Short solder terminal



▼ WIRE OPTIONS

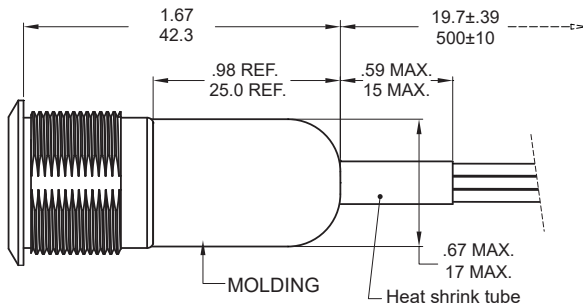
TX Wire leads UL3385 18 AWG (Flying lead Terminal)



CODE	DIM "L"
T1	500
T2	1000
T3	1500
T4	2000

Units: mm

D1 Molding, 500mm wire leads UL3385 18 AWG

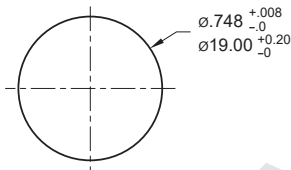


Wires:

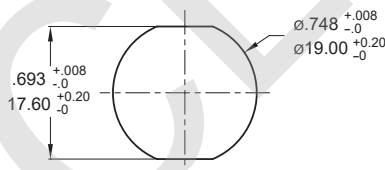
- Yellow wire - Terminal 1 and 4
- Purple wire - Terminal 2 and 5
- Green wire - Terminal 3 and 6
- Red wire - LED (+) Positive
- Black wire - LED (-) Negative

* Please consult sales for additional wire options.

▼ PANEL MOUNTING



Round



Double flat

Panel thickness:
.394inch(10.0 mm) MAX.

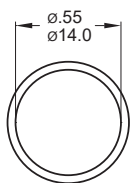
▼ HARDWARE

* Standard hardware : 1 nut, 1 O-ring

* For further information please consult sales representative.

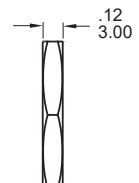
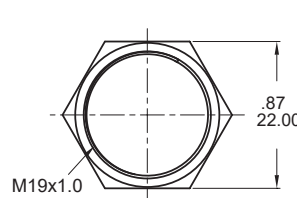
O-RING (Std.)

Model name. FCP-PY02



NUT (Std.)

Model name. MNU-MPB01



▼ O-RING INSTALLATION

