



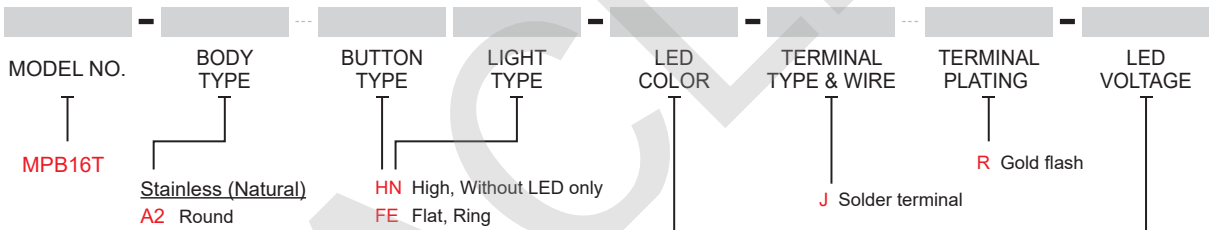
SPECIFICATIONS

- RATING:** 50mA/12VDC.
- ELECTRICAL LIFE:** 200,000 make-and-break cycles at full load
- MECHANICAL LIFE:** 1,000,000 cycles
- INSULATION RESISTANCE:** 100MΩ Min.
- DIELECTRIC STRENGTH:** 250V RMS@sea level.
- CONTACT RESISTANCE:** 100mΩMax.(Initial value).
- OPERATION TEMPERATURE:** -20°C~+70°C
- TRAVEL:** 0.85mm±0.25mm.
- OPERATION PRESSURE:** 450gf±150gf.
- INGRESS PROTECTION:** IP67(In house test)
- TORQUE:** 11.5 kgf · cm

MATERIALS

- BUSHING:** Stainless Steel
- BASE:** Nylon 6/6.
- ACTUATOR:** PC (Translucent UL 94-V2)
- CAP:** Stainless Steel
- RUBBER:** Silicone(Translucent).
- SEALING:** Viton.
- O-Ring:** Silicone (Translucent).
- TERMINAL:** Brass,Gold flash over silver plated.
- CONTACT:** Stainless,Silver plated.
- HEX NUT:** Brass (Nickel plated).

HOW TO ORDER



ITEM NO	COLOR
0	Without LED
6	Green

- ※ Current limiting resistor is required to limit LED forward current to 20mA.
- ※ Other LED colors need to be confirmed

Resistance (About LED Voltage)	
0V	Without Resistance
3V	LED input 3 VDC, 47Ω Note: Red/Yellow/Orange LED type only
6V	LED input 6 VDC, 180Ω
12V	LED input 12 VDC, 470Ω
24V	LED input 24 VDC, 1000Ω

※ ohms value of resistance tolerance: ±5%

EXAMPLE:
MPB16T-A2HN-0-JR-0 (Without LED)

MPB16T-A2FE-6-JR-□V
└─ LED voltage



MPB16T Series

16mm Low current Metal Pushbutton Switches

IP 67
ACCORDING TO
EN 60529:1989+A1:2001
IEC 60529:2001

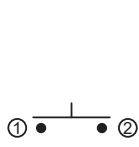
UL US
E 187490

RoHS
compliant

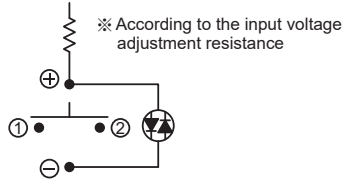
Pb
lead-free

MPB16T
Pushbutton Switches

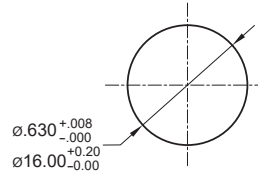
▼ CIRCUIT AND PANEL MOUNTING



Without LED



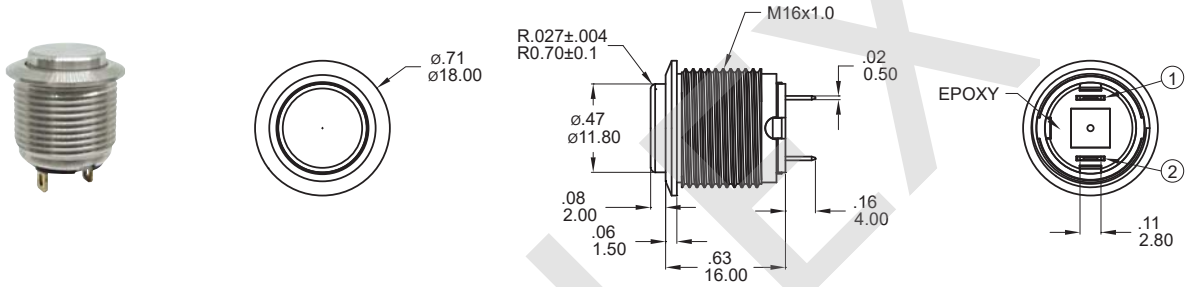
Single Color LED



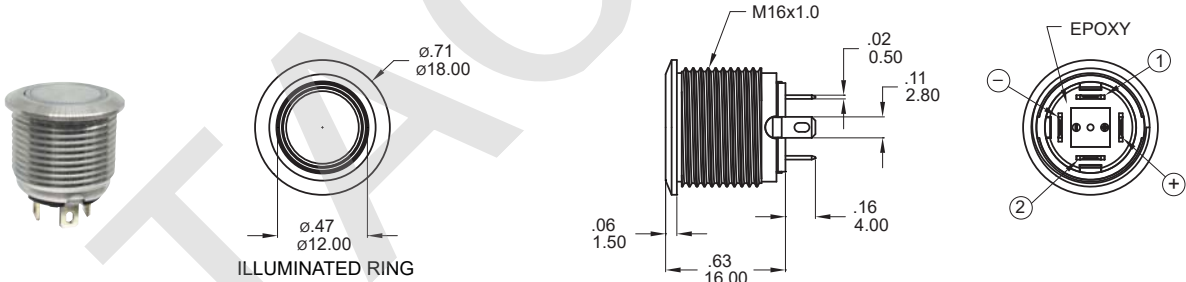
Round

Panel thickness:
8.0 mm (.031inch) MAX.

▼ DIMENSION



Model name. MPB16-A2HN-0-JR-0



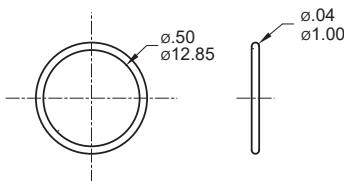
Model name. MPB16-A2FE-6-JR-6V

▼ HARDWARE

- * Standard hardware : 1 nut, 1 O-ring
- * For further information please consult sales representative.

O-RING (Std.)

Model name. FCP-MP602



NUT (Std.)

Model name. MNU-PY01

