

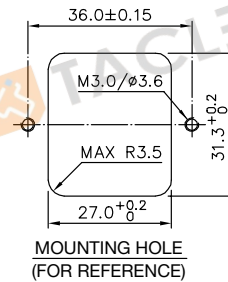
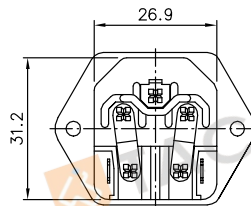
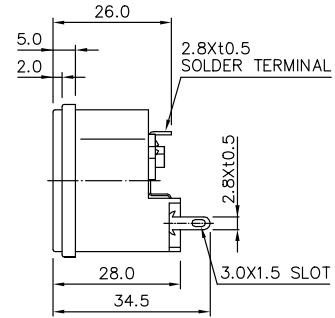
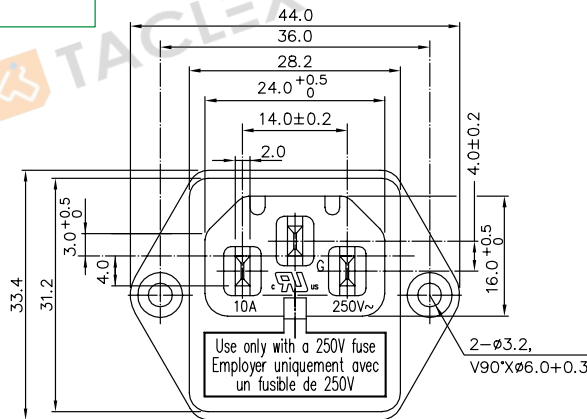


**3545
SERIES**

SPECIFICATION

RATING	: 10A 250VAC (UL,C-UL)
INLET	: 10A 250V~ (ENEC)
FUSE HOLDER	: MAX.10A/ 2 X 2.5W 250V~ (ENEC)
INSULATION RESISTANCE	: DC 500V 100MΩ OR MORE
WITHSTAND VOLTAGE	: AC 1500V FOR 1 Min

Standards: IEC60320/C14, IEC60127

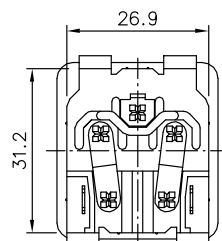
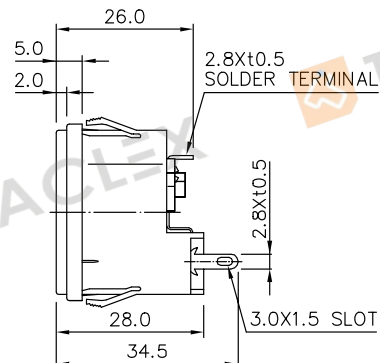
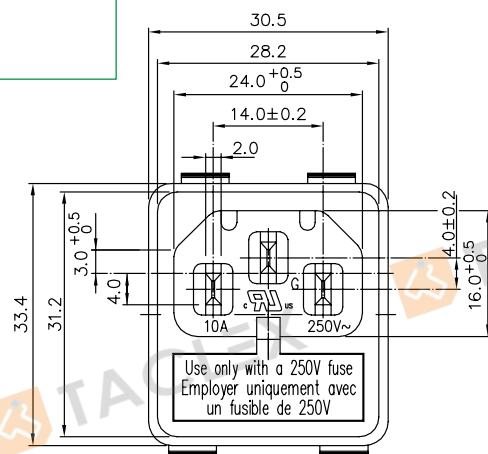


**3545
SERIES**

SPECIFICATION

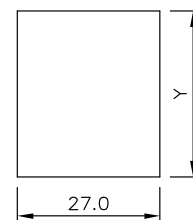
RATING	: 10A 250VAC (UL,C-UL)
INLET	: 10A 250V~ (ENEC)
FUSE HOLDER	: MAX.10A/ 2 X 2.5W 250V~ (ENEC)
INSULATION RESISTANCE	: DC 500V 100MΩ OR MORE
WITHSTAND VOLTAGE	: AC 1500V FOR 1 Min

Standards: IEC60320/C14, IEC60127



X= PANEL THICK

X	Y
0.8~1.2	31.4 ^{+0.2} / ₀
1.3~2.0	31.6 ^{+0.2} / ₀



MOUNTING HOLE (FOR REFERENCE)