

## TZ Series

Pizeo switch (Pulse)

※ 2018 Available



### SPECIFICATIONS

RATING : 24VDC/1A PULSE MODE.  
 OPERATING LIFE : 10MILLION CYCLE MIN.  
 CONTACT RESISTANCE : 1ΩMAX.  
 OPERATING TEMPERATURE : -20°C to 65°C.

### MATERIALS

BUSHING : Aluminum alloy  
 SEALING : Silicone, EPOXY  
 HEX NUT : Nickel plated brass.



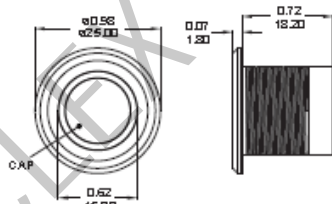
### HOW TO ORDER

MODEL NO.	BUSHING	CONTACT CONFIGURATION	RATING	BODY TYPE	BUTTON TYPE	LIGHT TYPE	CAP MARKING	LED COLOR	WIRE
TZ	□□	N	B4	F1	M	E	00	3C	□
	Bushing 19 15mm 22 22mm	Contact Configuration N Momentary/Pulse	Rating B4 24VDC/1A	Body type F1 Al-alloy, Double sided (Natural anodized)	Button type M Flat	Light type E Illuminated ring	Cap marking 00 No	LED Color 3C RO8	Wire 0101 254MG 150mm+2.5+ Connector 0102 254MG 300mm+2.5+ Connector

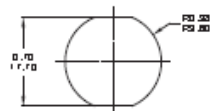


### LIGHT TYPE

E Ring

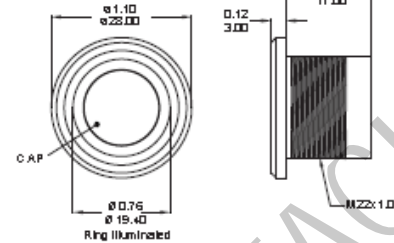


PANEL CUTOUT

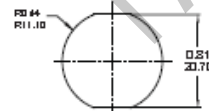


MAX. PANEL THICKNESS: 10.0mm (0.394)

E Ring



PANEL CUTOUT



MAX. PANEL THICKNESS: 10.0mm (0.394)