

SPECIFICATIONS

CONTACT RESISTANCE : 10 mΩ MAX.

INSULATION FORCE: Push Force: 2000±500g
 Pull Force: 2100±600g
 Total Travel: 2mm±0.2

OPERATING LIFE :

Electronics Life: 4A,24VDC,10 000cycles

Mechanical Life: 6-8 Operation cycles per minute,100,000cycles

OPERATING TEMPERATURE: -40±3°C(96hours)to+ 85±3°(96hours)

DIELECTRIC STRENGTH:

1,000V RMS 50HZ MIN.Between terminals

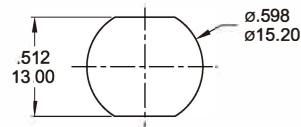
2,000V RMS 50HZ MIN.Between terminals and metal panel

CIRCUIT / PANEL MOUNTING

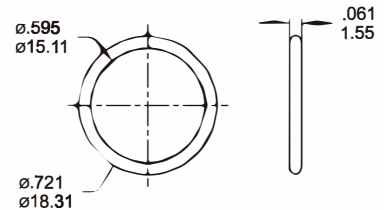
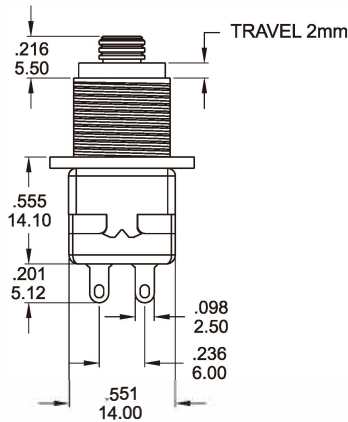
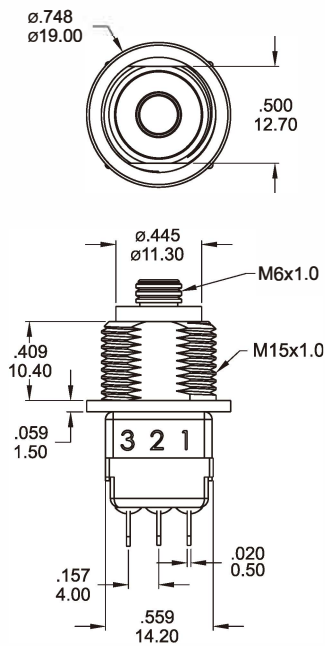
CIRCUIT

NO. POLES	Pull	ON	1-3 4-6
	Push	ON	1-2 4-5

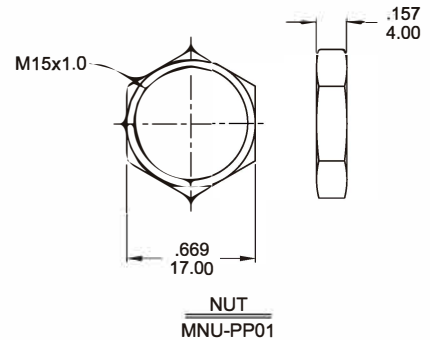
DECOUPE DU PANNEAU PANEL CUT-OUT



Part No. Shown : PTW-003



O-RING
FCP-PP01



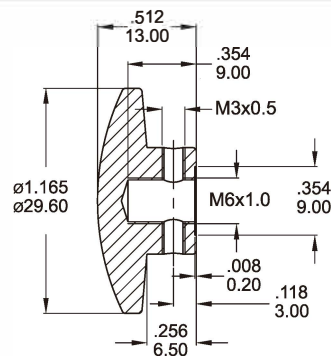
NUT
MNU-PP01

CAP

Part No. Shown : CP-PP04-3



MATERIAL: Aluminum
 SURFACE TREATMENT: Anodized,RED



SECTION B-B

