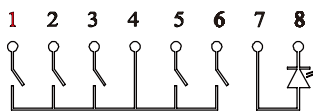
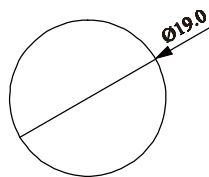


Contact Configuration & Panel cutting & Installation Notes

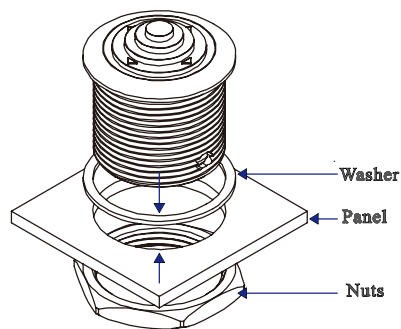


Pin	Function	Pin	Function
1	SW3 N.O.	5	SW4 N.O.
2	SW2 N.O.	6	SW5 N.O.
3	SW1 N.O.	7	LED(+)
4	SW COM.	8	LED(-)

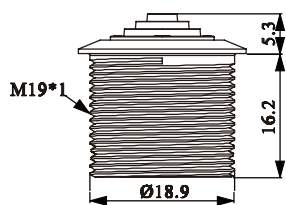
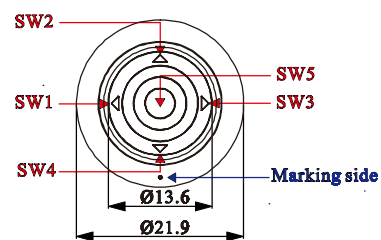
The Connector for SF19BA module similar JST BM08B-SRSS-TB
 Applicable Connector:
 Conductor pitch / 1.0mm
 Conductor width / 0.2mm



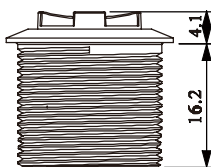
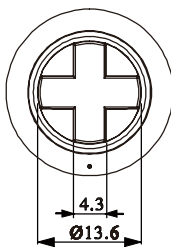
Panel thickness
1.5~4.0mm



Dimension

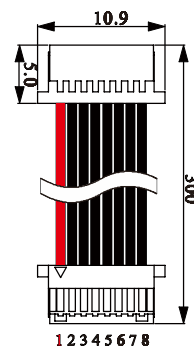


CAP Type 1



CAP Type 2

Option



Cable: YCW014

How to order

Module			
Part No	SF19BA0B11	SF19BA2B11	SF19BA7B12
Description	Without LED, SUS housing, Black CAP Type 1	Yellow LED, SUS housing, Black CAP Type 1	Blue LED, SUS housing, Black CAP Type 2

※ Color is subject to actual product.

※ We provide Laser Marking service.