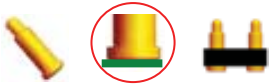


- Portable Electronic Products (Notebook, MP3, DSC, GPS, TV Game Peripherals...)
- Telecommunication Products (Cell phone, Two-Way Radio, Blue tooth...)
- Automotive (Car Stereo...)
- Medical Device (Hearing aids, Camera Pills, Surgical Instruments, Blood Analyzer...)
- Aerospace/Military Products

F Flat Type 平底式

PAGE: F01~F41



穩定性好，針管底部為平底設計，易於與PCB板焊接

Stable quality. The bottom of barrel is designed as flat shape, easy to be mounted on PCB.

P Plug-in Type 插件式

PAGE: P01~P16

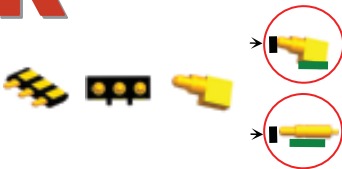


針軸尾部帶有定位針，與PCB板焊接時，不會發生偏移現象，定位效果佳。

With positioning pin on the bottom of barrel. Hard to shift after mounted on PCB. Good performance on positioning.

R Right-Angle Type 側放式

PAGE: R01~R05



側放式的設計大大減少產品的厚度。適用於當前超薄產品的電池連接部份。定位柱的設計更利於產品精確定位。

"Right-angle" design helps designer to narrow the space. Usually applied for the battery connector of super-thin electronic products. The design of housing positioning pin is good for precise position.

M Multiple Type 複合式

PAGE: M01~M01



結合彈片及探針的設計，提供設計人員更有彈性的空間設計

"Bent metal plus pogo pin" offers engineers to have flexible design on space adjustment.

B Bending Type 折彎式

PAGE: B01~B02



針軸尾部折彎，提供設計人員在空間的利用上更多選擇

"Bending tail of barrel" offers engineers to have more choices on space adjustment.

D Double-Ended Pin 雙頭針

PAGE: D01~D01



雙頭雙動的設計，讓工程師在板對板雙向連結有更多的空間彈性

Double-ended design offers engineers to have more choices of flexible space adjustment on board-to-board connection.

S Special Spec 特殊規格

PAGE: S01~S03



特殊規格的產品可滿足客戶不同的需求，同時將根據客戶的需求進行定制

Except the standard specification, we also provide the customization service for customers special needs in pogo pin connector field.

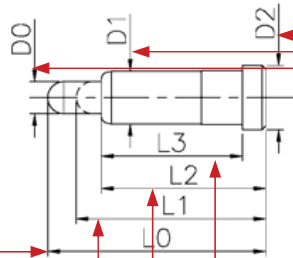
F Flat Type 平底式

連接器樣式代號
Symbol of Style



樣式說明
Type Introduction

此系列之針軸底部為平底設計，易於與PCB板焊接。其針軸底部為平底設計，易於與PCB板焊接。其針軸底部為平底設計，易於與PCB板焊接。



基本規格說明
Basic Spec Introduction

NOTE :

- Materials
 - Plunger : Brass 3604/BeCu/SK4
 - Barrel : Brass 3604/BeCu/PHBZ
 - Spring : SUS304/SWP/PHBZ
- Plating
 - Contact Surface : 10μm minimum Au over 50-100μm Ni
- Electrical
 - Rated Current & Voltage : DC 12 V ; 1 A
 - Contact Resistance : 50 mΩ maximum at Working Height.

總長 Total Length L0	工作高度 Working Height L1	彈力 (g) Spring Force±20%	管長 Barrel Length L2	管身長 Length L3	針頭外徑 Plunger Diameter D0	管身外徑 Barrel Diameter D1	底座外徑 Bottom Diameter D2
--------------------------	------------------------------	----------------------------	---------------------------	---------------------	--------------------------------	-------------------------------	-------------------------------

P Plug-in Type 插件式

連接器樣式代號
Symbol of Style

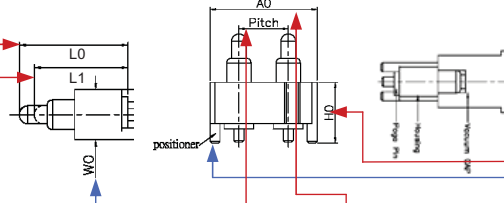


樣式說明
Type Introduction

針軸尾部帶有定位針，與PCB板焊接時，不會發生偏移現象，定位效果佳。

With a positioner in the bottom of barrel. Hard to be mounted on PCB. Good performance on positioning.

多針圖式(含膠芯)



基本規格說明
Basic Spec Introduction

NOTE :

- Material
 - Housing&CAP : Black PA9T/HTN/LCP/PBT+GF30% (UL94V-0)
 - Plunger : Brass 3604/BeCu/SK4
 - Barrel : Brass 3604/BeCu/PHBZ
 - Spring : SUS304/SWP/PHBZ
- Plating
 - Contact Surface : 10μm minimum Au over 50-100μm Ni
- Electrical
 - Rated Current & Voltage : DC 12 V ; 1 A
 - Contact Resistance : 50 mΩ maximum at Working Height.

總長 Total Length L0	工作高度 Working Height L1	彈力(g) Spring Force±20%	Pin	間距 Pitch	膠芯長 Housing Length A0	膠芯寬 Housing Width W0	膠芯高 Housing Height H0	定位柱 Positioner	膠蓋 Cap
--------------------------	------------------------------	---------------------------	-----	-------------	-----------------------------	----------------------------	-----------------------------	-------------------	-----------

M Multiple Type 複合式

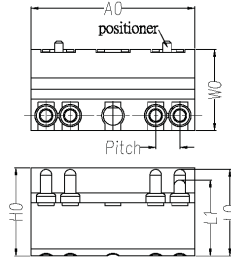


結合彈片及探針的設計，提供設計人員更有彈性的空間設計

"Bent metal plus pogo pin" offers engineers to have flexible design on space adjustment.

多針(含膠芯) Multiple Pins (with Housing)

單位 (Unit: mm)



NOTE :

- Materials
 - .Plunger : Brass 3604/BeCu/SK4
 - .Barrel : Brass 3604/BeCu/PHBZ
 - .Spring : SUS304/SWP/PHBZ
- Plating
 - .Contact Surface : 10µminimum Au over 50-100µNi
- Electrical
 - .Rated Current & Voltage : DC 12 V ; 1 A
 - .Contact Resistance : 50 mΩ maximum at Working Height.

P/N	Total Length (L0)	Working Height (L1)	Spring Force ± 20%	Pin	Pitch	Housing Length (A0)	Housing Width (W0)	Housing Height (H0)	Positioner	cap	Type
H094M0-H04A170RR	6.10	5.35	120.00	4	1.70	11.50	5.70	6.20	Y	N	M

B Bending Type 折彎式

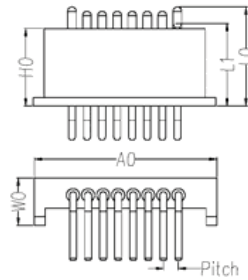


針軸尾部折彎，提供設計人員在空間的利用上更多選擇

"Bending tail of barrel" offers engineers to have more choices on space adjustment.

多針(含膠芯) Multiple Pins (with Housing)

單位 (Unit: mm)



NOTE :

- Materials
 - .Plunger : Brass 3604/BeCu/SK4
 - .Barrel : Brass 3604/BeCu/PHBZ
 - .Spring : SUS304/SWP/PHBZ
- Plating
 - .Contact Surface : 10µminimum Au over 50-100µNi
- Electrical
 - .Rated Current & Voltage : DC 12 V ; 1 A
 - .Contact Resistance : 50 mΩ maximum at Working Height.

P/N	Total Length (L0)	Working Height (L1)	Spring Force ± 20%	Pin	Pitch	Housing Length (A0)	Housing Width (W0)	Housing Height (H0)	Positioner	cap	Type
N153M1-04D300HR	6.20	5.20	110.00	4	3.00	31.90	10.50	4.90	N	N	B
H180M0-H08A175RT	11.10	9.60	35-55	8	1.75	21.20	3.00	9.00	Y	N	B

D Double-Ended Pin 雙頭針

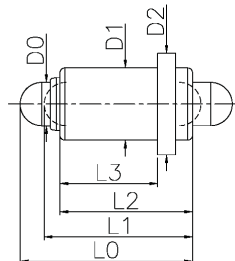


雙頭雙動的設計，讓工程師在板對板雙向連結有更多的空間彈性

Double-ended design offers engineers to have more choices of flexible space adjustment on board-to-board connection.

單針 Single Pin

單位 (Unit: mm)



NOTE :

- Materials
 - .Plunger : Brass 3604/BeCu/SK4
 - .Barrel : Brass 3604/BeCu/PHBZ
 - .Spring : SUS304/SWP/PHBZ
- Plating
 - .Contact Surface : 10µminimum Au over 50-100µNi
- Electrical
 - .Rated Current & Voltage : DC 12 V ; 1 A
 - .Contact Resistance : 50 mΩ maximum at Working Height.

P/N	Total Length (L0)	Working Height (L1)	Spring Force ± 20%	Barrel Length (L2)	Length (L3)	Plunger Diameter (D0)	Barrel Diameter (D1)	Bottom Diameter (D2)	Tail length (D4)	Type
H025M0	5.80	4.80	120.00	5.50	4.30	1.00	2.50	1.60	N	D
H202M0	7.15	6.15	100.00	5.90	5.50	1.80	3.00	3.00	N	D