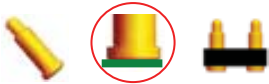


- Portable Electronic Products (Notebook, MP3, DSC, GPS, TV Game Peripherals...)
- Telecommunication Products (Cell phone, Two-Way Radio, Blue tooth...)
- Automotive (Car Stereo...)
- Medical Device (Hearing aids, Camera Pills, Surgical Instruments, Blood Analyzer...)
- Aerospace/Military Products

F Flat Type 平底式

PAGE: F01~F41



穩定性好，針管底部為平底設計，易於與PCB板焊接

Stable quality. The bottom of barrel is designed as flat shape, easy to be mounted on PCB.

P Plug-in Type 插件式

PAGE: P01~P16

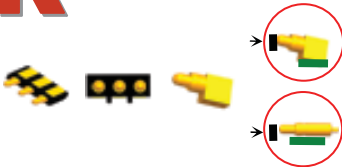


針軸尾部帶有定位針，與PCB板焊接時，不會發生偏移現象，定位效果佳。

With positioning pin on the bottom of barrel. Hard to shift after mounted on PCB. Good performance on positioning.

R Right-Angle Type 側放式

PAGE: R01~R05



側放式的設計大大減少產品的厚度。適用於當前超薄產品的電池連接部份。定位柱的設計更利於產品精確定位。

"Right-angle" design helps designer to narrow the space. Usually applied for the battery connector of super-thin electronic products. The design of housing positioning pin is good for precise position.

M Multiple Type 複合式

PAGE: M01~M01



結合彈片及探針的設計，提供設計人員更有彈性的空間設計

"Bent metal plus pogo pin" offers engineers to have flexible design on space adjustment.

B Bending Type 折彎式

PAGE: B01~B02



針軸尾部折彎，提供設計人員在空間的利用上更多選擇

"Bending tail of barrel" offers engineers to have more choices on space adjustment.

D Double-Ended Pin 雙頭針

PAGE: D01~D01



雙頭雙動的設計，讓工程師在板對板雙向連結有更多的空間彈性

Double-ended design offers engineers to have more choices of flexible space adjustment on board-to-board connection.

S Special Spec 特殊規格

PAGE: S01~S03



特殊規格的產品可滿足客戶不同的需求，同時將根據客戶的需求進行定制

Except the standard specification, we also provide the customization service for customers special needs in pogo pin connector field.

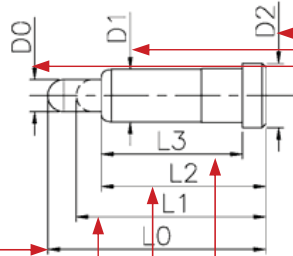
F Flat Type 平底式

連接器樣式代號
Symbol of Style



樣式說明
Type Introduction

此系列針軸底部為平底設計，易於與PCB板焊接。其針軸底部設計為平底，易於與PCB板焊接。



基本規格說明
Basic Spec Introduction

NOTE :

- Materials
 - Plunger : Brass 3604/BeCu/SK4
 - Barrel : Brass 3604/BeCu/PHBZ
 - Spring : SUS304/SWP/PHBZ
- Plating
 - Contact Surface : 10μm minimum Au over 50-100μm Ni
- Electrical
 - Rated Current & Voltage : DC 12 V ; 1 A
 - Contact Resistance : 50 mΩ maximum at Working Height.

總長 Total Length L0	工作高度 Working Height L1	彈力 (g) Spring Force±20%	管長 Barrel Length L2	管身長 Length L3	針頭外徑 Plunger Diameter D0	管身外徑 Barrel Diameter D1	底座外徑 Bottom Diameter D2
--------------------------	------------------------------	----------------------------	---------------------------	---------------------	--------------------------------	-------------------------------	-------------------------------

P Plug-in Type 插件式

連接器樣式代號
Symbol of Style

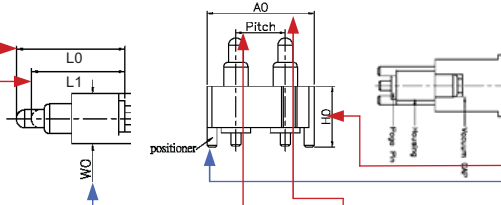


樣式說明
Type Introduction

針軸尾部帶有定位針，與PCB板焊接時，不會發生偏移現象，定位效果佳。

With a positioner in the bottom of barrel. Hard to be mounted on PCB. Good performance on positioning.

多針圖式(含膠芯)



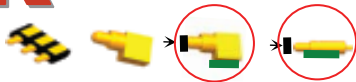
基本規格說明
Basic Spec Introduction

NOTE :

- Material
 - Housing&CAP : Black PA9T/HTN/LCP/PBT+GF30% (UL94V-0)
 - Plunger : Brass 3604/BeCu/SK4
 - Barrel : Brass 3604/BeCu/PHBZ
 - Spring : SUS304/SWP/PHBZ
- Plating
 - Contact Surface : 10μm minimum Au over 50-100μm Ni
- Electrical
 - Rated Current & Voltage : DC 12 V ; 1 A
 - Contact Resistance : 50 mΩ maximum at Working Height.

總長 Total Length L0	工作高度 Working Height L1	彈力(g) Spring Force±20%	Pin	間距 Pitch	膠芯長 Housing Length AO	膠芯寬 Housing Width W0	膠芯高 Housing Height H0	定位柱 Positioner	膠蓋 Cap
--------------------------	------------------------------	---------------------------	-----	-------------	-----------------------------	----------------------------	-----------------------------	-------------------	-----------

R Right-Angle Type 側放式

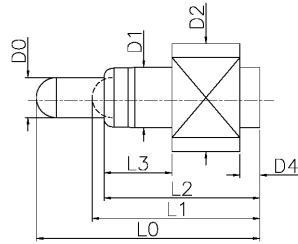


側放式的設計大大減少產品的厚度。適用於當前超薄產品的電池連接部份。定位柱的設計更利於產品精確定位。

"Right-angle" design helps designer to narrow the space. Usually applied for the battery connector of super-thin electronic products. The design of housing positioning pin is good for precise position.

單針 Single Pin

單位 (Unit: mm)



NOTE :

1.Materials

- .Plunger : Brass 3604/BeCu/SK4
- .Barrel : Brass 3604/BeCu/PHBZ
- .Spring : SUS304/SWP/PHBZ

2.Plating

- .Contact Surface : 10µm minimum Au over 50-100µNi

3.Electrical

- .Rated Current & Voltage : DC 12 V ; 1 A
- .Contact Resistance : 50 mΩ maximum at Working Height.

P/N	Total Length (L0)	Working Height (L1)	Spring Force ±20%	Barrel Length (L2)	Length (L3)	Plunger Diameter (D0)	Barrel Diameter (D1)	Bottom Diameter (D2)	Tail length (D4)	Type
H003M0	4.90	3.90	120.00	3.50	1.20	1.00	1.50	1.50	N	R
H003M2	4.90	3.90	120.00	3.50	1.20	1.00	1.50	1.50	N	R
H003M6	4.90	3.90	120.00	3.50	1.20	1.00	1.50	1.50	N	R
H050M0	5.10	4.20	80.00	3.60	1.50	0.75	2.00	1.50	N	R
H003M1	5.20	4.20	120.00	3.50	1.20	1.00	1.50	1.50	N	R
H003M3	5.30	4.30	120.00	3.50	1.20	1.00	1.50	1.50	N	R
H036M0	5.30	4.30	120.00	3.50	1.20	1.00	1.50	1.50	N	R
H012M2	5.60	4.20	90.00	3.90	1.70	1.00	1.51	2.70	0.5	R
H012M7	5.60	4.20	90.00	3.90	1.70	1.00	1.51	2.70	0.5	R

R Right-Angle Type 側放式

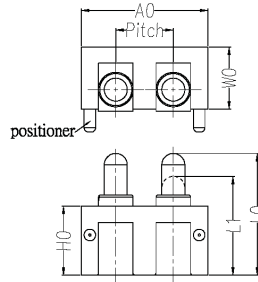


側放式的設計大大減少產品的厚度。適用於當前超薄產品的電池連接部份。定位柱的設計更利於產品精確定位。

"Right-angle" design helps designer to narrow the space. Usually applied for the battery connector of super-thin electronic products. The design of housing positioning pin is good for precise position.

多針(含膠芯) Multiple Pins (with Housing)

單位 (Unit: mm)



NOTE :

1.Materials

- .Plunger : Brass 3604/BeCu/SK4
- .Barrel : Brass 3604/BeCu/PHBZ
- .Spring : SUS304/SWP/PHBZ

2.Plating

- .Contact Surface : 10µm minimum Au over 50-100µNi

3.Electrical

- .Rated Current & Voltage : DC 12 V ; 1 A
- .Contact Resistance : 50 mΩ maximum at Working Height.

P/N	Total Length (L0)	Working Height (L1)	Spring Force ±20%	Pin	Pitch	Housing Length (A0)	Housing Width (W0)	Housing Height (H0)	Positioner	cap	Type
H003M0-H01C000RR	4.90	3.90	120.00	1	0.00	4.00	2.40	3.00	Y	N	R
H020M0-H02B250RR	5.30	4.30	120.00	2	2.50	5.50	2.70	3.00	Y	N	R
H036M0-H02C250RR	5.30	4.30	120.00	2	2.50	5.50	2.70	3.00	Y	N	R
H003M0-H03B250RR	4.90	3.90	120.00	3	2.50	7.70	2.80	3.00	Y	N	R
H003M2-H03B250RR	4.90	3.90	120.00	3	2.50	7.80	3.90	3.00	Y	N	R
H003M6-H03D250RR	4.90	3.90	120.00	3	2.50	7.80	3.35	3.00	N	N	R
H003M7-H03A310RR	4.90	3.90	120.00	3	3.10	8.90	4.35	3.00	Y	N	R
H050M0-H03A250RR	5.10	4.20	80.00	3	2.50	7.50	2.50	3.40	N	N	R
H003M1-H03B250RR	5.20	4.20	120.00	3	2.50	7.70	2.80	3.00	Y	N	R
H003M3-H03B250RR	5.30	4.30	120.00	3	2.50	7.70	2.80	3.00	Y	N	R
H012M2-H03B280RR	5.60	4.20	90.00	3	2.80	8.60	2.70	3.20	Y	N	R
H012M7-H03B280RR	5.60	4.20	90.00	3	2.80	8.60	2.70	3.20	Y	N	R
H016M2-H03A190RR	6.20	5.20	110.00	3	1.90	6.34	1.70	4.40	N	N	R
H016M0-H04A200RR	6.60	5.60	110.00	4	2.00	9.80	1.80	4.95	N	N	R