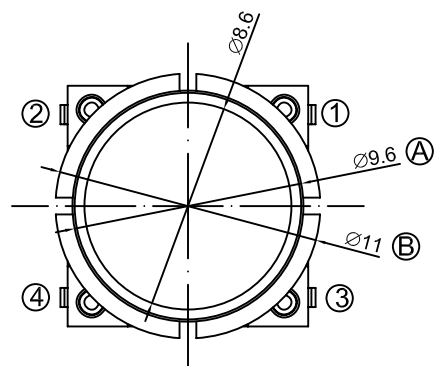
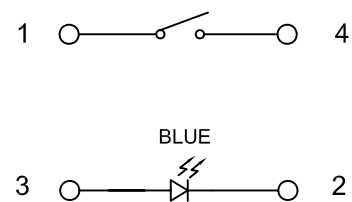


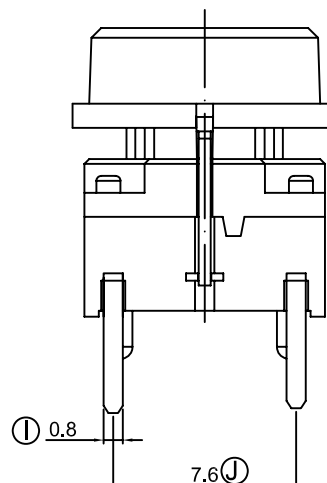
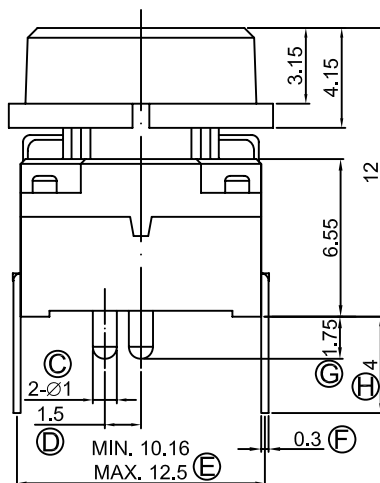
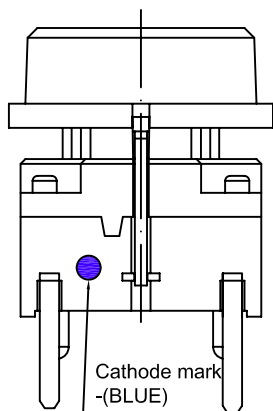
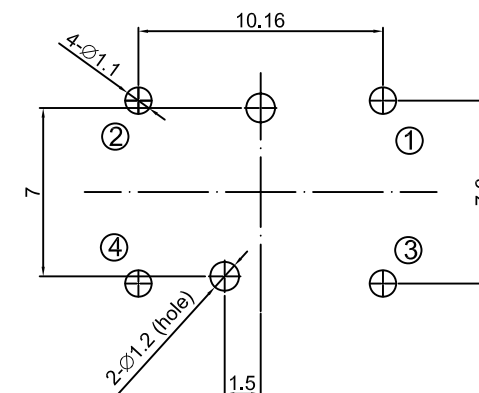
| DIMENSION    | TOLERANCE |
|--------------|-----------|
| BELOW 10 mm  | ± 0.3     |
| 10~100 mm    | ± 0.5     |
| ABOVE 100 mm | ± 0.8     |
| ANGLE        | ± 3°      |



### CIRCUIT DIAGRAM



### P.C.B. LAYOUT



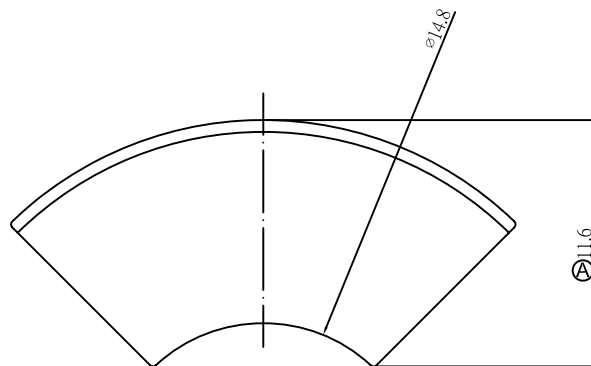
### SPECIFICATION :

1. RATING : 24 VDC,50mA .
2. CONTACT RESISTANCE : 50mΩ MAX
3. OPERATING FORCE : 300 ± 100gf .
4. OPERATING TEMP: -30°C~85°C
5. LIFE CYCLE : 1,500,000 CYCLE .

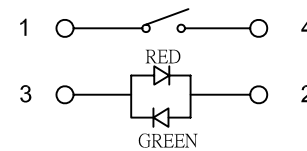
|   |      |          |        |                                |          |            |       |       |              |                    |  |
|---|------|----------|--------|--------------------------------|----------|------------|-------|-------|--------------|--------------------|--|
| △ |      |          |        |                                | DATA     | 2012/12/13 | UNIT  | mm    | MODE         | FACT SWITCH        |  |
| △ |      |          |        |                                | APPROVAL | KAVEN      | SCALE | 1 : 1 | PART         | TC018              |  |
| △ |      |          |        |                                | CONFIRM  | TEREANCE   | VIEW  |       | 2D FILE NAME | TC018-N11AR1ATUBXX |  |
|   | DATA | APPROVAL | DESIGN | ENGINEERING CHANGE DESCRIPTION | DESIGN   | HQ         | VER.  | 01    | 3D FILE NAME |                    |  |



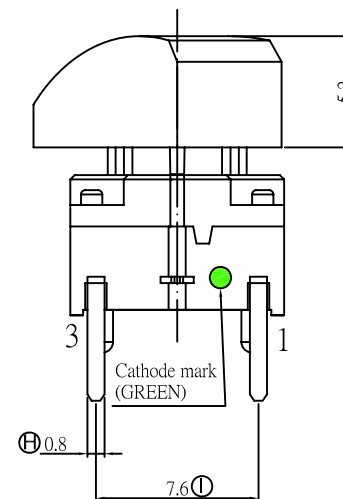
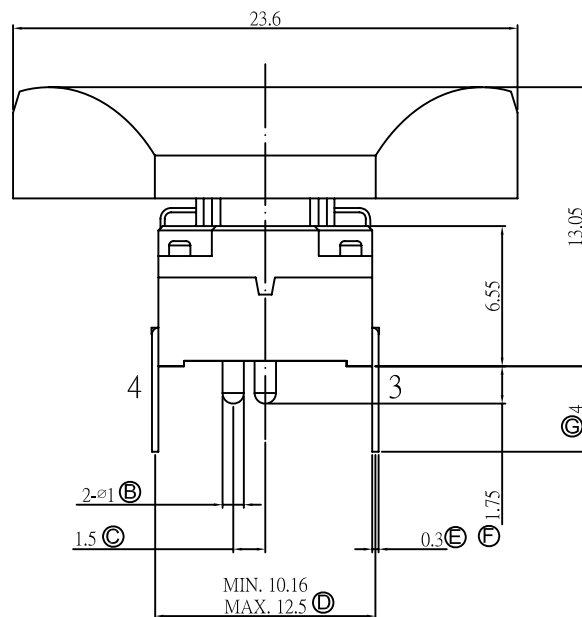
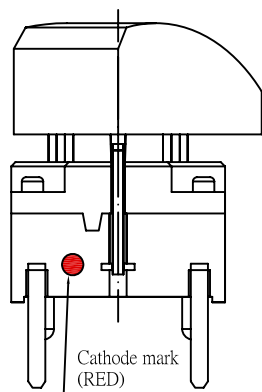
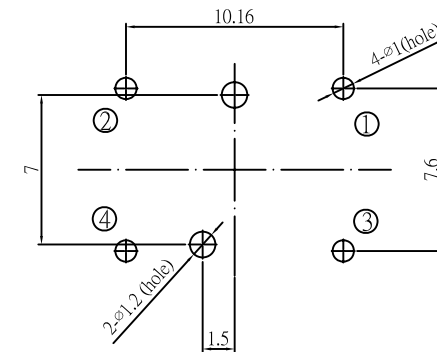
| DIMENSION    | TOLERANCE |
|--------------|-----------|
| BELOW 10 mm  | ± 0.3     |
| 10~100 mm    | ± 0.5     |
| ABOVE 100 mm | ± 0.8     |
| ANGLE        | ± 3'      |



### CIRCUIT DIAGRAM



### P.C.B. LAYOUT

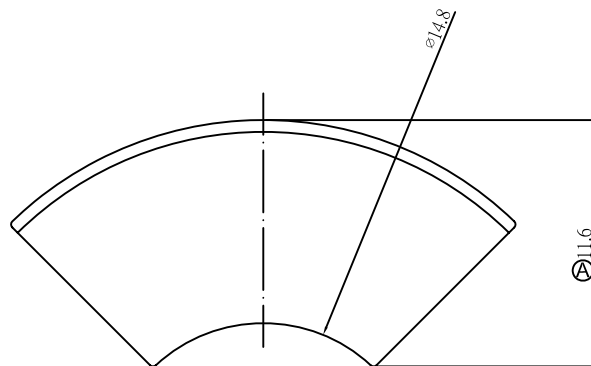


### SPECIFICATION :

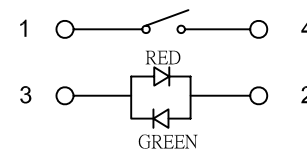
1. RATING : 24 VDC, 50mA .
2. CONTACT RESISTANCE : 50m $\Omega$  MAX
3. OPERATING FORCE : 300 ± 100gf .
4. OPERATING TEMP: -30°C~85°C
5. LIFE CYCLE : 1,500,000 CYCLE .

|   |      |          |        |                                |          |           |       |       |              |                   |
|---|------|----------|--------|--------------------------------|----------|-----------|-------|-------|--------------|-------------------|
| △ |      |          |        |                                | DATA     | 2012/1/14 | UNIT  | mm    | MODE         | TACT SWITCH       |
| △ |      |          |        |                                | APPROVAL | KAVEN     | SCALE | 1 : 1 | PART         | TC018-N11AR2TURUG |
| △ |      |          |        |                                | CONFIRM  | TEREANCE  | VIEW  |       | 2D FILE NAME | TC018-N11AR2TURUG |
|   | DATA | APPROVAL | DESIGN | ENGINEERING CHANGE DESCRIPTION | DESIGN   | HQ        | VER.  | 01    | 3D FILE NAME |                   |

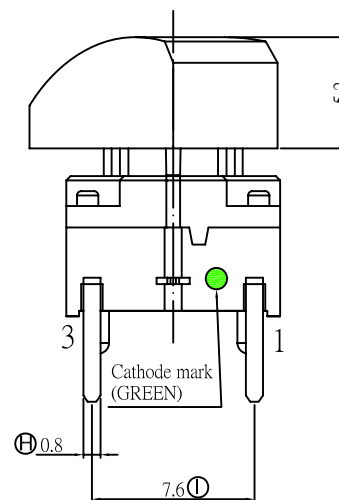
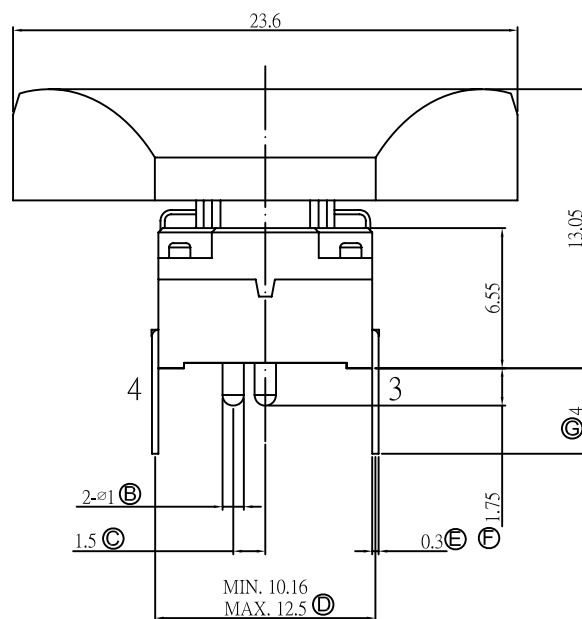
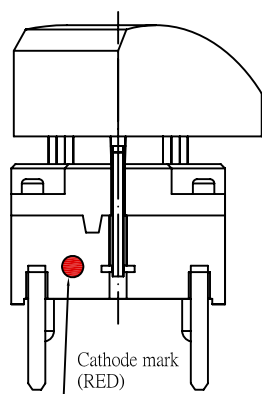
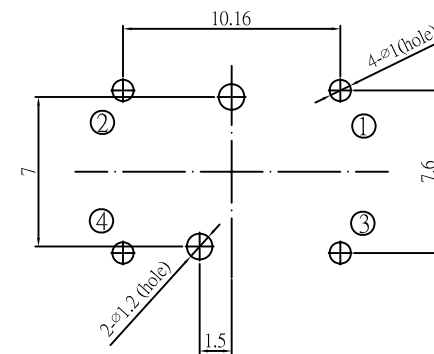
| DIMENSION    | TOLERANCE |
|--------------|-----------|
| BELOW 10 mm  | ± 0.3     |
| 10~100 mm    | ± 0.5     |
| ABOVE 100 mm | ± 0.8     |
| ANGLE        | ± 3'      |



### CIRCUIT DIAGRAM



### P.C.B. LAYOUT

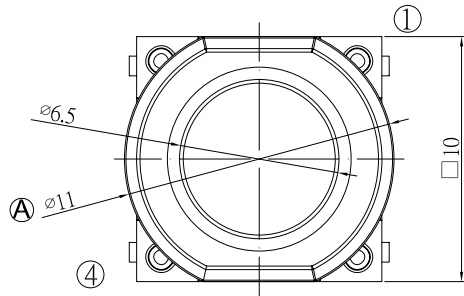


### SPECIFICATION :

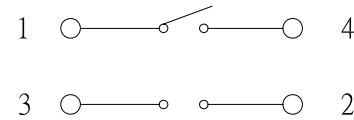
1. RATING : 24 VDC, 50mA .
2. CONTACT RESISTANCE : 50mΩ MAX
3. OPERATING FORCE : 300 ± 100gf .
4. OPERATING TEMP: -30°C~85°C
5. LIFE CYCLE : 1,500,000 CYCLE .

|   |      |          |        |                                |          |           |       |   |              |                   |   |
|---|------|----------|--------|--------------------------------|----------|-----------|-------|---|--------------|-------------------|---|
| △ |      |          |        |                                | DATA     | 2012/1/14 | UNIT  | mm  | MODE         | TACT SWITCH       |  |
| △ |      |          |        |                                | APPROVAL | KAVEN     | SCALE | 1 : 1   | PART         | TC018-N11AR2TURUG |   |
| △ |      |          |        |                                | CONFIRM  | TEREANCE  | VIEW  |  | 2D FILE NAME | TC018-N11AR2TURUG |   |
|   | DATA | APPROVAL | DESIGN | ENGINEERING CHANGE DESCRIPTION | DESIGN   | HQ        | VER.  | 01  | 3D FILE NAME |                   |   |

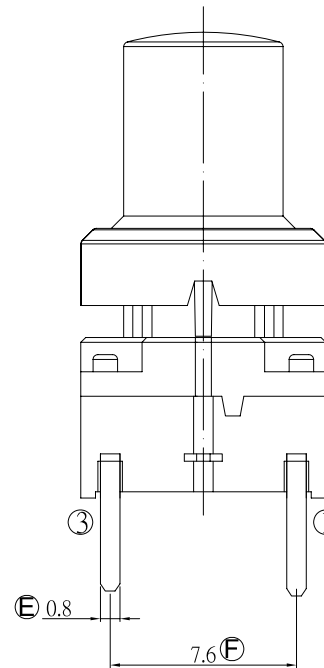
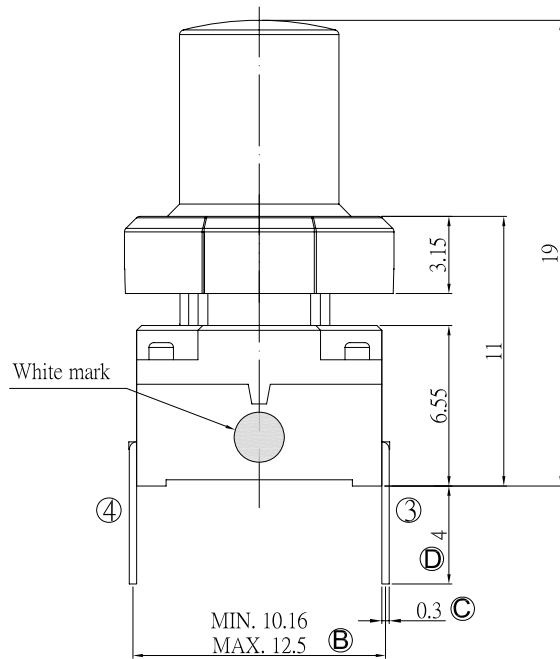
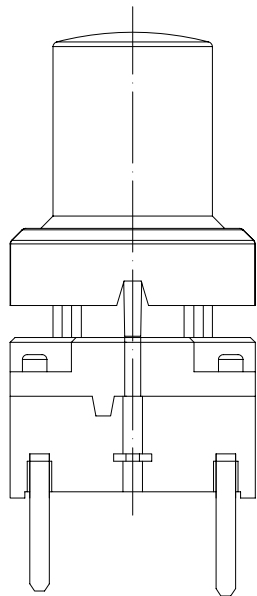
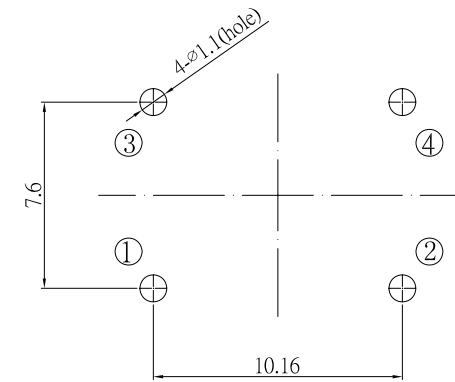
| DIMENSION    | TOLERANCE |
|--------------|-----------|
| BELOW 10 mm  | ± 0.3     |
| 10~100 mm    | ± 0.5     |
| ABOVE 100 mm | ± 0.8     |
| ANGLE        | ± 3'      |



### CIRCUIT DIAGRAM



### P.C.B. LAYOUT



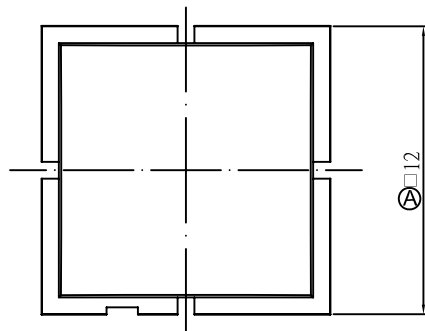
### SPECIFICATION :

1. RATING : 24 VDC , 50mA .
2. CONTACT RESISTANCE : 50mΩ MAX
3. OPERATING FORCE : 300 ± 100gf .
4. OPERATING TEMP: -30°C~85°C
5. LIFE CYCLE : 1,500,000 CYCLE .

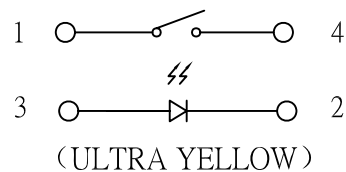
|   |      |          |        |                                |          |           |       |       |              |                     |  |
|---|------|----------|--------|--------------------------------|----------|-----------|-------|-------|--------------|---------------------|--|
| △ |      |          |        |                                | DATA     | 2012/2/20 | UNIT  | mm    | MODE         | TACT SWITCH         |  |
| △ |      |          |        |                                | APPROVAL | KAVEN     | SCALE | 1 : 1 | PART         | TC018-N11AR3KXXXX-1 |  |
| △ |      |          |        |                                | CONFIRM  | TEREANCE  | VIEW  |       | 2D FILE NAME | TC018-N11AR3KXXXX-1 |  |
|   | DATA | APPROVAL | DESIGN | ENGINEERING CHANGE DESCRIPTION | DESIGN   | VANSUN    | VER.  | 01    | 3D FILE NAME |                     |  |



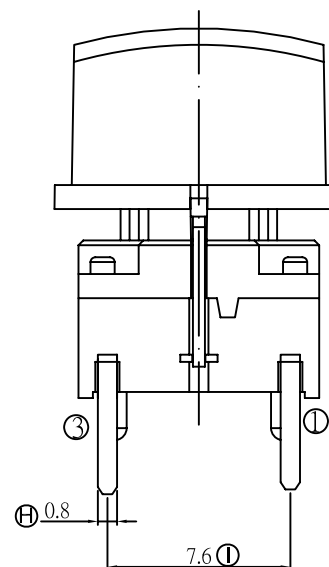
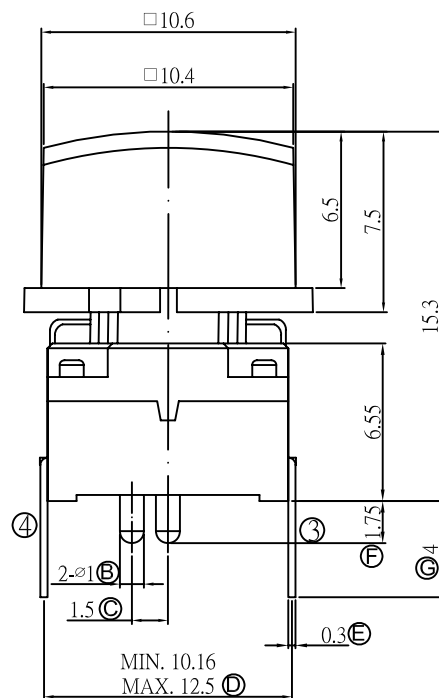
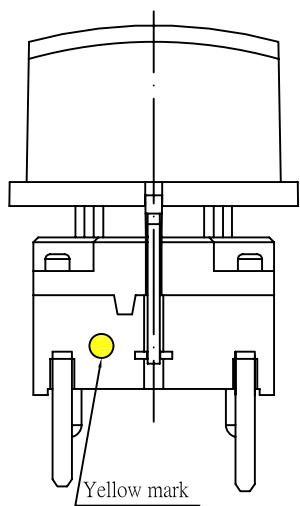
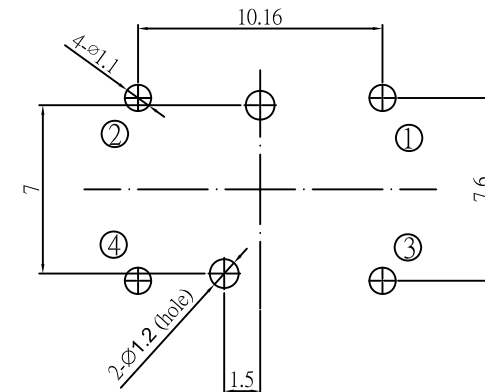
| DIMENSION    | TOLERANCE |
|--------------|-----------|
| BELOW 10 mm  | ± 0.3     |
| 10~100 mm    | ± 0.5     |
| ABOVE 100 mm | ± 0.8     |
| ANGLE        | ± 3'      |



## CIRCUIT DIAGRAM



## P.C.B. LAYOUT



## SPECIFICATION :

1. RATING : 24 VDC,50mA .
2. CONTACT RESISTANCE : 50mΩ MAX
3. OPERATING FORCE : 300 ± 100gf .
4. OPERATING TEMP: -30°C~85°C
5. LIFE CYCLE : 1,500,000 CYCLE .

|   |      |          |        |                                |          |           |       |       |              |                   |  |
|---|------|----------|--------|--------------------------------|----------|-----------|-------|-------|--------------|-------------------|--|
| △ |      |          |        |                                | DATA     | 2012/4/26 | UNIT  | mm    | MODE         | TACT SWITCH       |  |
| △ |      |          |        |                                | APPROVAL | KAVEN     | SCALE | 1 : 1 | PART         | TC018             |  |
| △ |      |          |        |                                | CONFIRM  | TEREANCE  | VIEW  |       | 2D FILE NAME | TC018-N11AS1TUYXX |  |
|   | DATA | APPROVAL | DESIGN | ENGINEERING CHANGE DESCRIPTION | DESIGN   | HXB       | VER.  | 01    | 3D FILE NAME |                   |  |