

G6系列 / Series-G606



基本型雙斷微動開關 Basic DPDT Micro Switch

■訂貨指引 Ordering Instruction 參見第 27 頁/Refer to Page 27

■特點/Features

- ◆體型小巧，結構緊湊
- ◆長壽命，高可靠性
- ◆端子種類齊全
- ◆雙斷型轉換機構
- ◆廣泛應用於工業控制等領域

- Contact Size and Tight Configuration
- Long Life, High Reliability
- Variety Of Terminals
- DPDT Double-Break Type
- Widely used in Industry Control, etc.

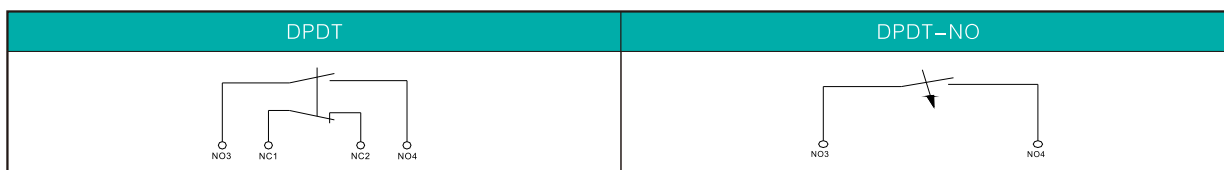
■應用/Application

- ◆浮筒
 - ◆排污泵
- Float
Sewage Pump

■特性參數/Parameters:

| | | |
|--|---------------|--|
| 額定值Rating | 06 | 0.5A 125/250VDC |
| | | 0.5A/6A 125/250VAC, 1/4HP 250VAC |
| 操作頻率Operating Frequency | 電器/Electrical | 10 ~ 30 次/分 cycles/minute |
| | 機械/Mechanical | 120 次/分 cycles/minute |
| 觸點電阻 (初始值) / Contact Resistance(Initiative) | | 最大30 ~ 100mΩ (取決於類型) /30 ~ 100mΩ Max (Depends on P/Ns) |
| 絕緣電阻/Insulation Resistance | | 在500VDC時, 100MΩ Min./100MΩ Min.(at 500VDC) |
| 抗電強度/Dielectric Strength | | AC 750V RMS (50-60Hz) |
| 保存溫度/Storage Temperature | | -40° C ~ +125° C |
| 保存濕度/Storage Humidity | | 85%RH Max |
| 壽命/Service Life | 電器/Electrical | 50,000 ~ 100,000次/Cycles (取決於類型/Depends on P/Ns) |
| | 機械/Mechanical | 500,000次 |
| 單重/Unit Net Weight | | 約1.96g (焊接型端子無手柄類型) Approx.110g (solder terminals, without lever) |

■接觸型式Circuit Configuration



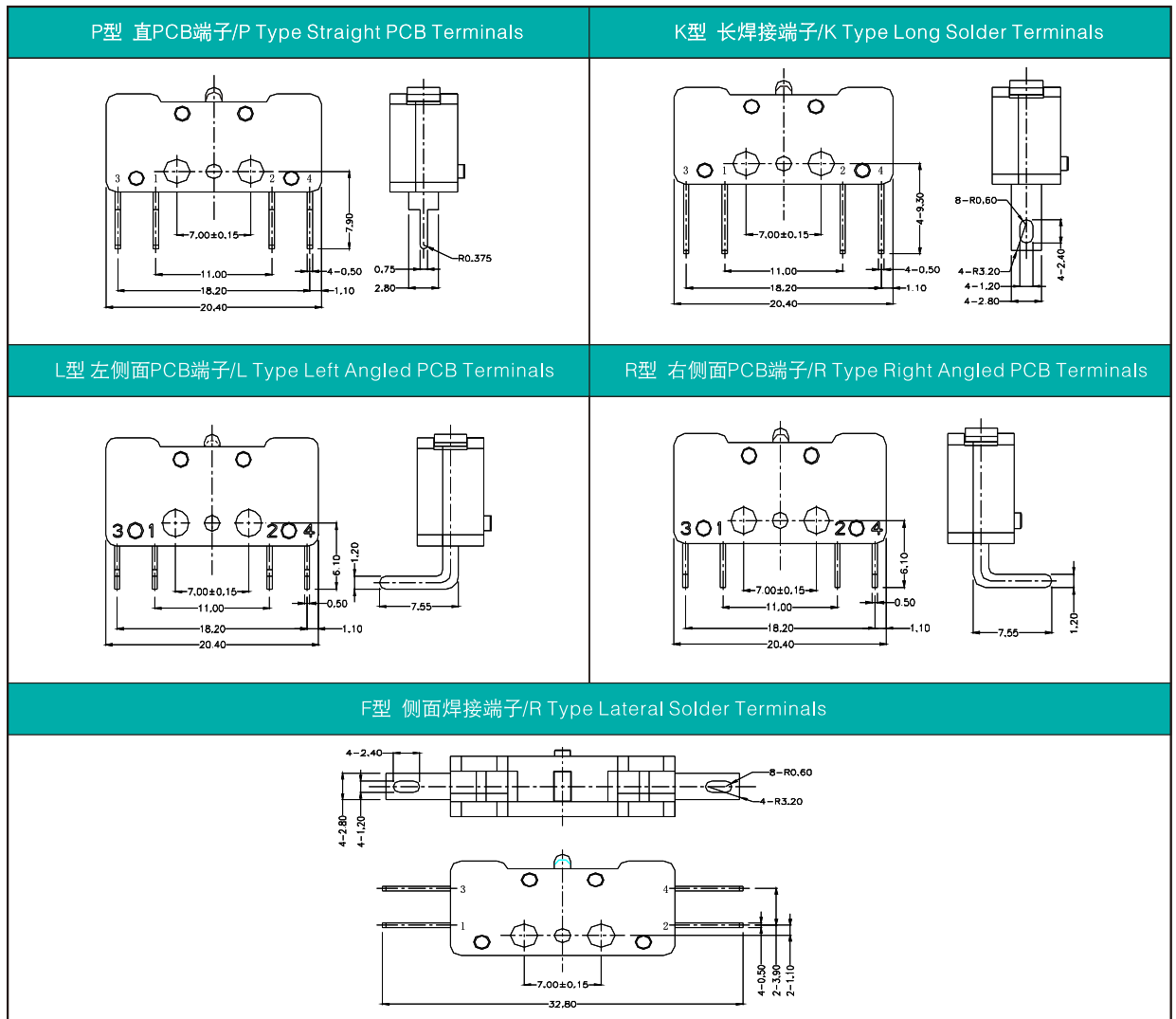
■安裝孔尺寸Mounting Hole Dimensions

(單位/Unit:mm)

| 安裝孔尺寸Mounting Hole Dimensions | 底面PCB端子安裝孔尺寸 Mounting Hole Dimension of PCB at bottom | 側面PCB端子安裝孔尺寸 Mounting Hole Dimension of Angled PCB terminal |
|-------------------------------|---|---|
| | | |

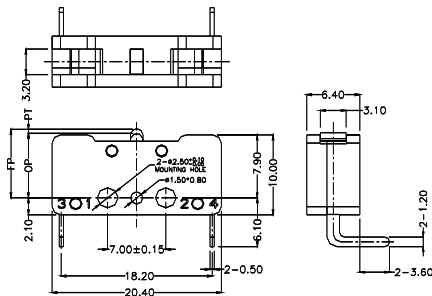
■端子類型 Terminal Type

◆端子厚度為0.5mm/Thickness of Terminals : 0.5mm



■外形尺寸和操作特性/Dimensions and Operating Characteristics

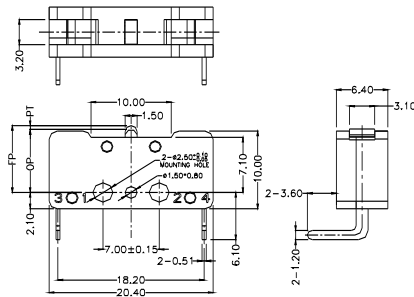
◆G606-200R00E



| OF Max. (gf) | RF Min. (gf) | PT Max. (mm) | OT Min. (mm) | MD Max. (mm) | FP Max. (mm) | OP (mm) |
|--------------------|--------------------|--------------------|--------------------|--------------------|--------------------|------------|
| 200 | 40 | 1.5 | 0.25 | 0.45 | 9.5 | 7.7 ± 0.3 |

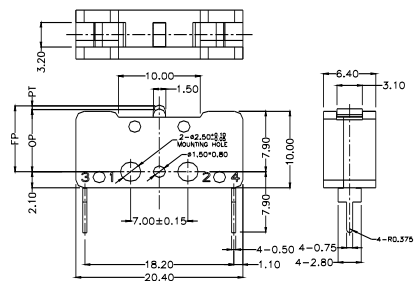
■外形尺寸和操作特性/Dimensions and Operating Characteristics

◆ G606-200L00E



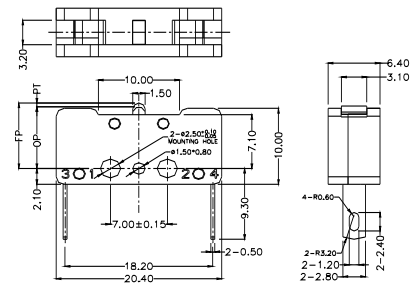
| OF Max. (gf) | RF Min. (gf) | PT Max. (mm) | OT Min. (mm) | MD Max. (mm) | FP Max. (mm) | OP (mm) |
|--------------|--------------|--------------|--------------|--------------|--------------|-----------|
| 200 | 40 | 1.5 | 0.25 | 0.45 | 9.5 | 7.7 ± 0.3 |

◆ G606-200P00E



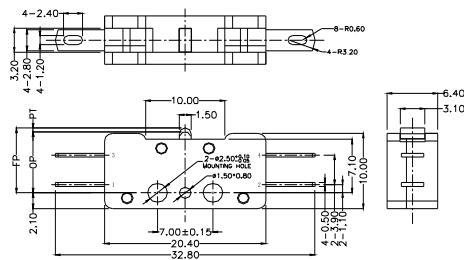
| OF Max. (gf) | RF Min. (gf) | PT Max. (mm) | OT Min. (mm) | MD Max. (mm) | FP Max. (mm) | OP (mm) |
|--------------|--------------|--------------|--------------|--------------|--------------|-----------|
| 200 | 40 | 1.5 | 0.25 | 0.45 | 9.5 | 7.7 ± 0.3 |

◆ G606-200K00E



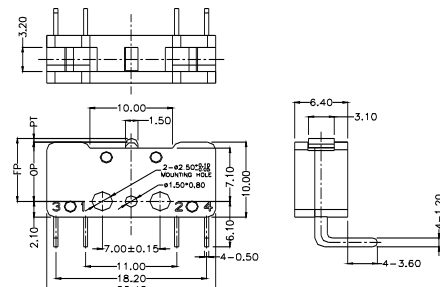
| OF Max. (gf) | RF Min. (gf) | PT Max. (mm) | OT Min. (mm) | MD Max. (mm) | FP Max. (mm) | OP (mm) |
|--------------|--------------|--------------|--------------|--------------|--------------|-----------|
| 200 | 40 | 1.5 | 0.25 | 0.45 | 9.5 | 7.7 ± 0.3 |

◆ G606-200F00D



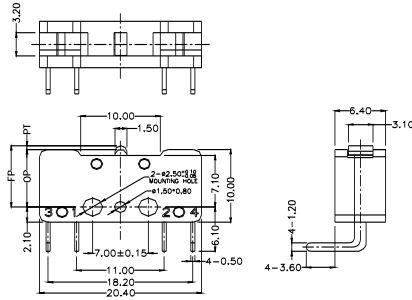
| OF Max. (gf) | RF Min. (gf) | PT Max. (mm) | OT Min. (mm) | MD Max. (mm) | FP Max. (mm) | OP (mm) |
|--------------|--------------|--------------|--------------|--------------|--------------|-----------|
| 200 | 40 | 1.5 | 0.25 | 0.45 | 9.5 | 7.7 ± 0.3 |

◆ G606-200R00D



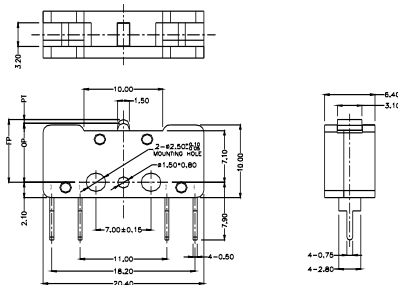
| OF Max. (gf) | RF Min. (gf) | PT Max. (mm) | OT Min. (mm) | MD Max. (mm) | FP Max. (mm) | OP (mm) |
|--------------|--------------|--------------|--------------|--------------|--------------|-----------|
| 200 | 40 | 1.5 | 0.25 | 0.45 | 9.5 | 7.7 ± 0.3 |

◆ G606-200L00D



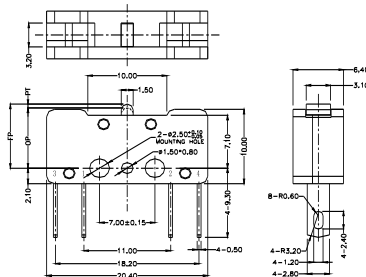
| OF Max. (gf) | RF Min. (gf) | PT Max. (mm) | OT Min. (mm) | MD Max. (mm) | FP Max. (mm) | OP (mm) |
|--------------|--------------|--------------|--------------|--------------|--------------|-----------|
| 200 | 40 | 1.5 | 0.25 | 0.45 | 9.5 | 7.7 ± 0.3 |

◆ G606-200P00D



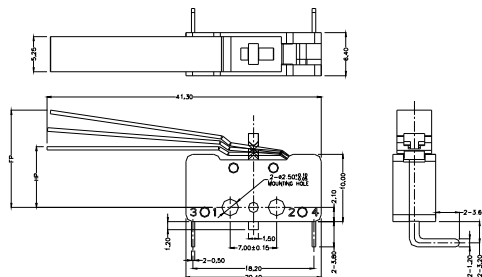
| OF Max. (gf) | RF Min. (gf) | PT Max. (mm) | OT Min. (mm) | MD Max. (mm) | FP Max. (mm) | OP (mm) |
|--------------|--------------|--------------|--------------|--------------|--------------|-----------|
| 200 | 40 | 1.5 | 0.25 | 0.45 | 9.5 | 7.7 ± 0.3 |

◆ G606-200K00D



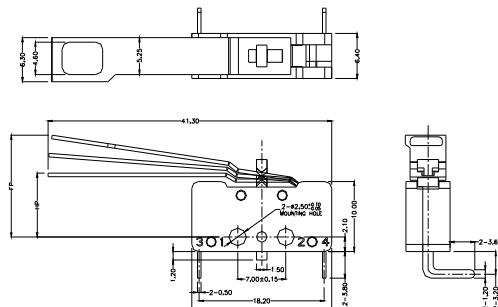
| OF Max. (gf) | RF Min. (gf) | PT Max. (mm) | OT Min. (mm) | MD Max. (mm) | FP Max. (mm) | OP (mm) |
|--------------|--------------|--------------|--------------|--------------|--------------|-----------|
| 200 | 40 | 1.5 | 0.25 | 0.45 | 9.5 | 7.7 ± 0.3 |

◆ G606-200R11EK



| | |
|--|---------------|
| 正向操作力 Positive direction operating force | 12gf MAX |
| 反向操作力 Negative direction operating force | 12gf MAX |
| 正向行程 Positive direction travel | 8.0mm MAX |
| 反向行程 Negative direction travel | 8.6mm MAX |
| 正向自由位置 Positive direction free position | 19.0mm MAX |
| 反向自由位置 Negative direction free position | 9.5mm MAX |
| 正向動作位置 Positive direction operating position | 12.05 ± 1.0mm |
| 反向動作位置 Negative direction operating position | 15.5 ± 1.0mm |

◆ G606-200R12EK



| | |
|--|---------------|
| 正向操作力 Positive direction operating force | 12gf MAX |
| 反向操作力 Negative direction operating force | 12gf MAX |
| 正向行程 Positive direction travel | 8.0mm MAX |
| 反向行程 Negative direction travel | 8.6mm MAX |
| 正向自由位置 Positive direction free position | 19.0mm MAX |
| 反向自由位置 Negative direction free position | 9.5mm MAX |
| 正向動作位置 Positive direction operating position | 12.05 ± 1.0mm |
| 反向動作位置 Negative direction operating position | 15.5 ± 1.0mm |