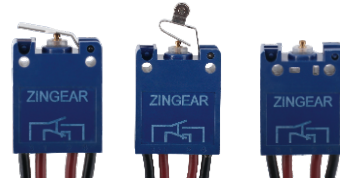


G11系列 / G11 Series

防水防塵型雙斷點微動開關

Sealed DPDP Micro Switch



■ 特點/Features

- ◆ 體型小巧，結構緊湊
- ◆ 長壽命，高可靠性
- ◆ IP67防水防塵設計
- ◆ 雙斷型轉換機構
- ◆ 多種安裝方式和操作類型
- ◆ 廣泛應用於工業控制等領域

Contact Size and Tight Configuration
 Long Life, High Reliability
 Dust and Water Proof Design (IP67)
 DPDT Double-Break Type
 Variety of Mounting Method and Operation Type
 Widely used in Industry Control, etc.

■ 應用/Application

- ◆ 電動執行器
- ◆ 閥門控制
- ◆ 電站控制
- ◆ 工業自動化控制
- ◆ 核電設施
- ◆ 汽車生產線

Electrical Actuators
 Valve Control
 Power Station Control
 Industrial Auto Control
 Nuclear Power Facilities
 Automobile Production Line

■ 特性參數/Parameters

額定值Rating	05	0.5A 250VDC
		0.5A/5A 250VAC
操作頻率 Operating Frequency	電器/Electrical	10 ~ 30 次/分 cycles/minute
	機械/Mechanical	120 次/分 cycles/minute
觸點電阻 (初始值) /Contact Resistance (Initiative)		最大30 ~ 100mΩ (取決於類型, 不含電線電阻) /30 ~ 100mΩ Max (Depends on P/Ns, wire resistance exclude)
絕緣電阻/Insulation Resistance		在500VDC 時, 100MΩ Min./100MΩ Min(at 500VDC)
抗電強度/Dielectric Strength		AC 750V RMS (50-60Hz)
保存溫度/Storage Temperature		-25° C ~ +85° C
保存濕度/Storage Humidity		85%RH Max
壽命/Service Life	電氣/Electrical	50,000 次 cycles (取決於類型/Depends on P/Ns)
	機械/Mechanical	2,000,000次 cycles
單重/Unit Net Weight		約110g (八綫型) Approx. 110g(8 wires)

G11系列微動開關訂貨型號指引 G11 Series Micro Switch Ordering Instruction

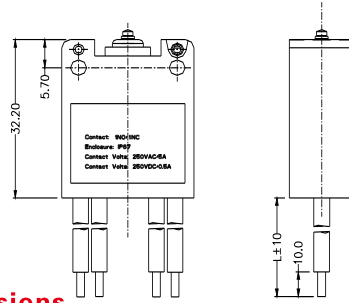
G11	05	350	00	D	01	E1	XX	XX
开关类别 Switch Type	额定电流 Electrical rating	操作力(最大值) 数据在不带 操作柄时等Max Operating force at pin plunger	操作柄类型 Lever type	接触形式 Circuit code	安装孔尺寸 Mounting hole dimension	出线类型 Wire type	特别设计代码 Special designator	特别设计代码 Special designator
G11系列微动开关 G11 Series Micro switch	0.5A 250VDC 0.5A/5A 250VAC 5E4 v 25T8S (仅适用于四线八线 开关Only for switches with 4 or 8 wires)	350g max (适用于四线开关only for switches with 4 wires INO/INC)	不能操作柄 No lever Pin Plunger	DPDT 双触点型	01 5.7mmX e 3.1mmX19mm	底面出线 Wires leads to the bottom 线长780mm UL1015 AWG18 (NO黑色/NO black/NC棕色 NC brown)	通用型 General	特别设计代码 Special designator
		450g max (适用于八线开关only for switches with 8 wires 2NO/2NC)	直手柄 Straight lever 宽10mm*长24mm 10mm wide* 24mm long	DPDT-NO 双触点常 开型	02 6.7mmX e 3.1mmX14mm (适用于四线型开关 only for switches with 4 wires, INO /INC)	底面出线 Wires leads to the bottom 线长610mm Wire length 610mm 60227 IEC 06(RV) (NO/NC)		
	其他 Other		直手柄 straight lever 宽7mm*长32mm 7mm wide* 32mm long	DPDT-NC 双触点常 闭型	03 5.7mmX e 3.5mmX16mm_ e 3.0mmX7mm (适用于四线型开关 only for switches with 4 wires, INO /INC)	底面出线 Wires leads to the bottom 线长4000mm wire length 4000mm UL1015 18AWG (线材颜色: 红/蓝/棕/绿 外圈 加套PVC柔性套管, wire color: red/blue/black/brown, add PVC tube)		
	...		滚轮手柄 Roller lever	...	其他 Other	其他线材可根据客户要求定制 others (wire material could be customized)
			其他 Other

TACLEX

■ 出線類型 With Wire Type

◆ 线长规格可按客户要求定制 Wire length could be Customized

底面出線型
wire leads to bottom



■ 安裝孔尺寸/Mounting Hole Dimensions

(單位Unit: mm)

01型安裝孔/01# Mounting Hole 5.7mmX ϕ 3.1mmX19mm	02型安裝孔/02# Mounting Hole 6.7mmX ϕ 3.1mmX14mm	03型安裝孔/03# Mounting Hole 5.7mmX ϕ 3.5mmX16mm_ ϕ 3.0mmX7mm

■ 操作柄類型 Lever type

00#不帶操作柄 Without lever	01#: 直手柄(寬10mm*長24mm) 01#: Straight lever(10mm width*24mm length)
02#: 直手柄(寬7mm*長32mm) 02#: Straight lever(7mm width*32mm length)	03#: 滾輪手柄 03#: Roller lever

■ 接觸型式 Circuit Configuration

DPDT 1NO+1NC	DPDT 2NO+2NC

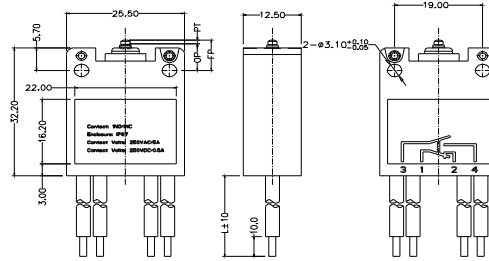
TACLEX

■外形尺寸和操作特性/Dimenstions and Operating Characteristics

◆G1105-35000D01□



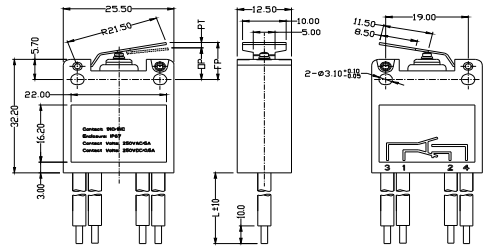
OF Max. (gf)	RF Min. (gf)	PT Max. (mm)	OT Min. (mm)	MD Max. (mm)	FP Max. (mm)	OP(mm)
350	40	1.30	0.25	0.45	8.6	7.0 ± 0.3



◆G1105-35001D01□



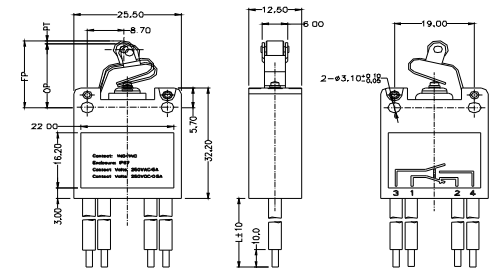
OF Max. (gf)	RF Min. (gf)	PT Max. (mm)	OT Min. (mm)	MD Max. (mm)	FP Max. (mm)	OP(mm)
200	10	3.00	0.3	1.3	12.8	8.9 ± 0.9



◆G1105-35003D01□



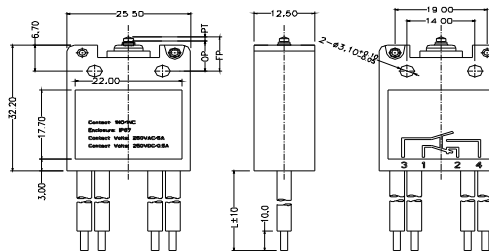
OF Max. (gf)	RF Min. (gf)	PT Max. (mm)	OT Min. (mm)	MD Max. (mm)	FP Max. (mm)	OP(mm)
450	40	3.00	0.3	1.3	23.0	19.0 ± 1.0



◆G1105-35000D02□



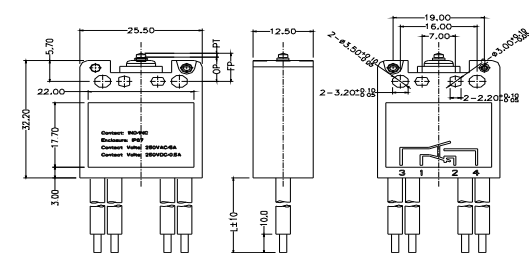
OF Max. (gf)	RF Min. (gf)	PT Max. (mm)	OT Min. (mm)	MD Max. (mm)	FP Max. (mm)	OP(mm)
350	40	1.30	0.25	0.45	9.6	8.0 ± 0.3



◆G1105-35000D03□



OF Max. (gf)	RF Min. (gf)	PT Max. (mm)	OT Min. (mm)	MD Max. (mm)	FP Max. (mm)	OP(mm)
350	40	1.30	0.25	0.45	8.6	7.0 ± 0.3



◆G1105-45000D01□



OF Max. (gf)	RF Min. (gf)	PT Max. (mm)	OT Min. (mm)	MD Max. (mm)	FP Max. (mm)	OP(mm)
450	50	1.30	0.25	0.45	8.6	7.0 ± 0.3

