

G10系列 / G10 Series

超小型微動開關

Subminiature General Micro Switch



■特點/Features

- ◆ 體型小巧，結構緊湊
- ◆ 長壽命，高可靠性
- ◆ 端子種類齊全
- ◆ 配備各種形式操作柄
- ◆ 廣泛應用於家用及工業控制等領域

- ◆ Small Compact Size
- ◆ Long Life and High Reliability
- ◆ Variety of Terminals
- ◆ Variety of Levers Optional
- ◆ Widely used in Appliance and Industry Control

■應用/Application

- ◆ 無線對講機/Walkie Talkie
- ◆ 鼠標/Mouse
- ◆ 電切刀/Electric Knife
- ◆ 電動釘書機/Electric Stapler
- ◆ 電話/Telephone
- ◆ 計算器/Calculator
- ◆ 混合器與切肉刀/Mixer & Chopper
- ◆ 電鍋/Electric Pan
- ◆ 電池充電器/Battery Charger
- ◆ 錄像帶卷繞機/Video Cassette Rewinder
- ◆ 無繩電話/Cordless Phone
- ◆ 報警器/Alarm
- ◆ 測試器/Tester Machine
- ◆ 家用電器/Home Appliance

■特性參數/Parameters:

額定值/Rating	P1	0.1A 48VDC/125VAC (可選鍍金Gold plated optional)
	03	1A/3A 125VAC
操作頻率 Operating Frequency	電氣/Electrical	10~30次/分 cycles/minute
	機械/Mechanical	120次/分 cycles/minute
觸點電阻 (初始值) Contact Resistance(Initial Value)		100mΩ Max (取決於類型/Depends on P/Ns)
絕緣電阻/Insulation Resistance(at 500VDC)		在500VDC時/At 500VDC, 100MΩ Min.
抗電強度/Dielectric Strength		AC 600V RMS (50-60Hz)
保存溫度/Storage Temperature		-40° C ~ +85° C
保存濕度/Storage Humidity		85%RH Max
壽命/Service Life	電氣/Electrical	6,000 ~ 100,000 次/cycles (取決於類型/Depends on P/Ns)
	機械/Mechanical	1,000,000次/cycles
單重 / Unit Net Weight		約0.5g (直PCB無手柄類型) About 0.5g(Straight PCB type without lever)

G10系列微动开关订货型号指引 G10 Series Micro Switch Ordering Instruction

G10	P1	150	S	00	A	XX	XX
Switch Type 开关类别	Electrical Rating 额定负载	Max Operating Force at Pin Plunger 操作力(最大值) 数据在不带操作柄测得	Terminal Type 端子类型	Lever Type 操作柄类型	Circuit code 接触形式	Special Designator 特别设计代码	Special Designator 特别设计代码
G10 Series Micro-Switch G10 系列 微动开关	P1 ENE/CQC: 0.1A 48VDC/125VAC 5E4 u.40T85 UL/CUL: 0.1A 48VDC/125VAC	090 90gf Max	S 标准直插端子 Solder Terminals	00 不带操作柄 No lever 柱式接垫 Pin Plunger	A SPDT 单极双投	通用型General	此亦为特别设计代码, 其 体道参考产品规格来确定 详细的差别。 Here means special designator letter, refer to product specification for details.
	03 ENE/CQC: 1A/3A, 125VAC 1E4 u.40T85 UL/CUL: 1A/3A, 125VAC	150 150gf Max	P 标准直插PCB端子 Straight PCB Terminals	01 短直手柄10.0mm Short Straight Lever 0.39"	A	镀金 Gold Plated	
		... 其他 Other	Q 卡夹型PCB端子 Snap in PCB Terminals	02 标准直手柄13.0mm Std. Straight Lever 0.52"	B 仅适用于小电流 Only for low current	12 无卤材料 Non-Halogen Material	
			M 短焊端子 Short Solder Terminals	05 模拟滚轮 手柄 11.8mm Simulated Roller Lever 0.46"			
			R PCB 右侧端子 Right Angled PCB Terminals	07 小型模拟滚轮手柄 15.0mm Small Simulated Roller Lever 0.59"			
			L PCB 左侧端子 Left Angled PCB Terminals	09 最长直手柄 30.0mm Long Straight lever			
			K 长焊端子 Long Solder Terminals	10 滚轮手柄 12.80mm Roller Lever			
			... 特殊端子 Special Terminals	... 特殊手柄 Special Lever			

G10系列 | 安裝孔位、操作柄類型、接觸形式、外形介紹、端子類 G10 Series | Mounting Hole, Lever Type, Circuit, Shape, Terminal Type

■ 端子類型 / Terminal Type

◆ 端子厚度為0.6mm / Terminal thickness: 0.6mm

<p>S型/Type 直焊接端子 Straight Solder Terminals</p>	<p>P型/Type 直插PCB端子 Straight PCB Terminals</p>
<p>Q型/Type 自鎖PCB端子 PCB snap-in (clip) Terminals</p>	<p>M型/Type 短焊接端子 Short Solder Terminals</p>
<p>R型/Type 右側PCB端子 Right Angled PCB Terminals</p>	<p>L型/Type 左側PCB端子 Left Angled PCB Terminals</p>
<p>K型/Type 長焊接端子 Long Solder Terminals</p>	<p>■ 接觸形式圖 / Circuit Configuration</p>

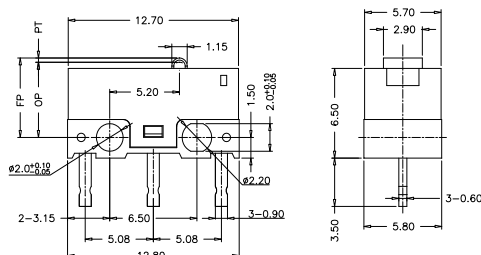
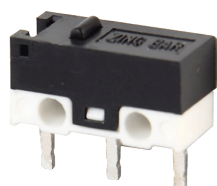
■ 安裝孔尺寸 Mounting Hole Dimension

(單位/Unit: mm)

<p>安裝孔尺寸 Mounting Hole Dimension</p>	<p>PCB端子安裝孔尺寸 Mounting Hole Dimension of PCB Terminals</p>
<p>右向PCB端子安裝孔尺寸 Mounting Hole Dimension of Right Angled PCB Terminals</p>	<p>左向PCB端子安裝孔尺寸 Mounting Hole Dimension of Left Angled PCB Terminals</p>

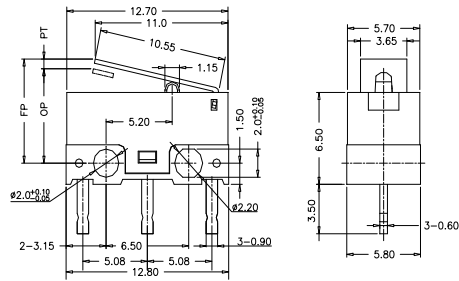
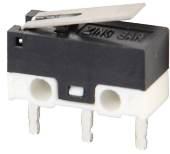
■ 外形尺寸和操作特性 / Dimensions and Operating Characteristics

◆ G10□□-□P00A



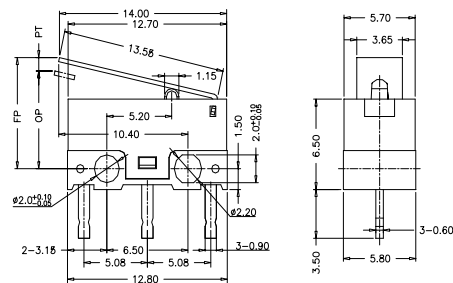
	OF Max. (gf)	RF Min. (gf)	PT Max. (mm)	OT Min. (mm)	DT Max. (mm)	FP Max. (mm)	OP (mm)
-090	90	15	0.65	0.2	0.2	6.0	5.5±0.3
-150	150	20					

◆ G10□□-□P01A



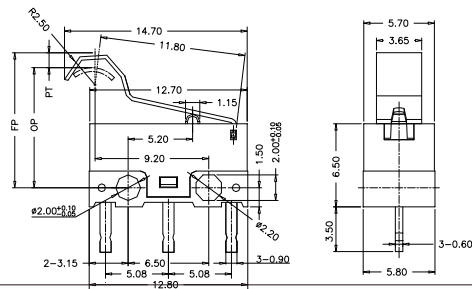
	OF Max. (gf)	RF Min. (gf)	PT Max. (mm)	OT Min. (mm)	DT Max. (mm)	FP Max. (mm)	OP (mm)
-090	40	6	2.5	0.3	0.6	8.0	6.25±0.8
-150	60	10					

◆ G10□□-□P02A



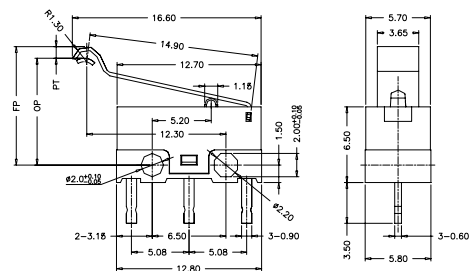
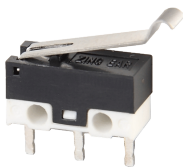
	OF Max. (gf)	RF Min. (gf)	PT Max. (mm)	OT Min. (mm)	DT Max. (mm)	FP Max. (mm)	OP (mm)
-090	30	4	3.4	0.3	0.8	8.8	6.35±0.9
-150	50	8					

◆ G10□□-□P05A



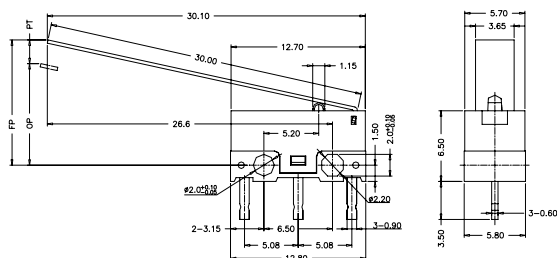
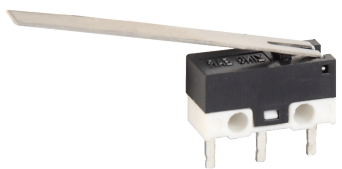
	OF Max. (gf)	RF Min. (gf)	PT Max. (mm)	OT Min. (mm)	DT Max. (mm)	FP Max. (mm)	OP (mm)
-090	40	5	3.0	0.3	0.7	12	9.5±0.8
-150	50	8					

◆ G10□□-□P07A



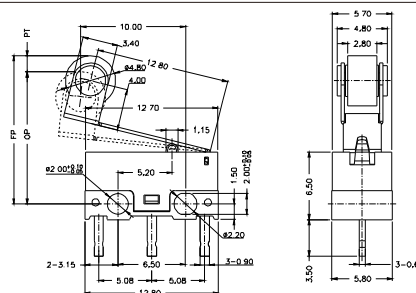
	OF Max. (gf)	RF Min. (gf)	PT Max. (mm)	OT Min. (mm)	DT Max. (mm)	FP Max. (mm)	OP (mm)
-090	30	5	3.5	0.3	1.1	11.5	8.2±1.0
-150	50	8					

◆ G10□□-□P09A



	OF Max. (gf)	RF Min. (gf)	PT Max. (mm)	OT Min. (mm)	DT Max. (mm)	FP Max. (mm)	OP (mm)
-090	15	2	6.9	0.4	2.5	14.0	8.2±2.1
-150	23	3					

◆ G10□□-□P10A



	OF Max. (gf)	RF Min. (gf)	PT Max. (mm)	OT Min. (mm)	DT Max. (mm)	FP Max. (mm)	OP (mm)
-090	35	3	5.5	0.3	0.8	16.5	13.0±1.3
-150	50	6					