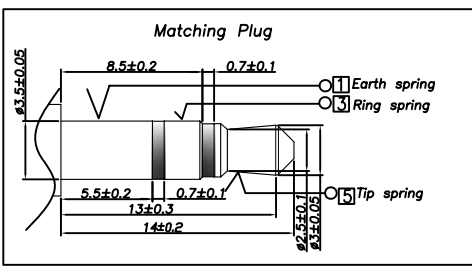
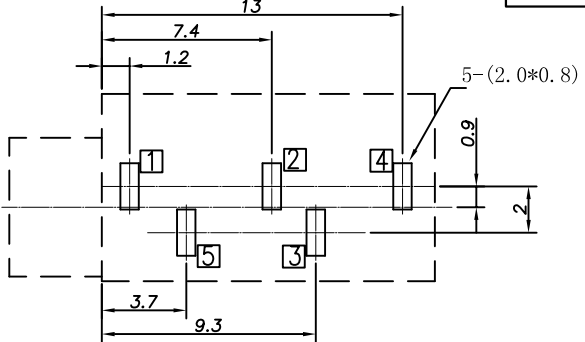
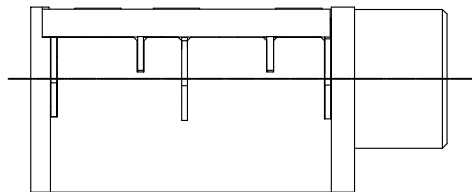


P. C. B Layout
(Copper-sided view)



Ordering information:
 TPJ-3A34C- □ PB □□ T 00 3
 (1) (2) (3) (4) (5) (6) (7)

(1):Series No.
 (2):Schematic option: A B C D
 (3):Material of housing:
 PB=PBT (Standard)
 46=PA46
 (4): Housing color:
 0A=Black 2L=Red(0211 PA46) 2G=Red(0146)
 2R=Red(0046) 3A=Orange(0031) 5V=Green(0012)
 5F=Green(0326) 5V=Green(0212 PA46)
 6A=Blue(0011) 6B=Blue(0037)
 (5):Terminal plating
 T=The terminal are Tin(Sn)plating, but 3# terminal is silver(Ag) plating (Standard)
 G=Gold(Au)
 (6):Special option--Bushing plating
 00=Nickel(Ni) plating
 0G=Gold(Au) plating
 (7):Packing mode:
 3=Plastic box packing

P/N	TPJ-3A34C-A	TPJ-3A34C-B
Schematic		
	TPJ-3A34C-C	TPJ-3A34C-D

□: TERMINAL NO.

10	Bushing	1	Copper alloy	TPJ-3A34C- 02T -JK0017)	Nickel(Ni) plating Gold(Au) plating
9	spring-2	1	Spring Wire	TPJ-3A34C-66A	Nickel(Ni) plating
8	spring-1	1	Spring Wire	TPJ-3A34C-66B	Nickel(Ni) plating
7	Tip spring	5	Phosphor bronze 0.25t	TPJ-3A34C-05	Tin(Sn) plating
6	Shunt terminal	4	Brass 0.30t	TPJ-3A34C- 0MP -JK0007)	Tin(Sn) plating
5	Shunt terminal	2	Brass 0.30t	TPJ-3A34C- 0MP -JK0006)	Tin(Sn) plating
4	Ring spring	3	Phosphor bronze 0.25t	TPJ-3A34C-03(TP-JK0015) (Only used to A/C two kinds of circuit) TPJ-3A34C-03B (Only used to B/D two kinds of circuit)	Silver(Ag) plating
3	Earth terminal	1	Brass 0.25t	TPJ-3A34C-01(PP-JK0005)	Tin(Sn) plating
2	Cover	1	PBT	TPJ-3A34C-S2 (GZ-JK0003)	Tin(Sn) Plating
1	Housing	1	PBT/PA46	TPJ-3A34C-S1 (ST-JK0018)	
NO.	DESCRIPTION	QTY	MATERIAL	PART NO.	REMARK

SPECIFICATION
 1.Rating : DC 30V 0.5A;
 2.Contact resistance: ≤30mΩ;
 3.Insulation resistance: ≥100MΩ (DC250V);
 4.Withstand voltage: 500VAC ;
 5.Insertion and extraction force: 3-30N;
 6.life test: 5,000 cycles.
 7.Sign"▲ "is importance dimension

SYM	DISCIPTION	DATE	APPROVED
△			
△			
△			
△			
△			

TACLEX TACLEX ELECTRONICS CO., LTD.

TOLERANCES UNLESS OTHERWISE SPECIFIED
 LINEAR: ±0.30 ANGULAR: ±3°

REVISIONS	SIGNATURES	DATE	TITLE
A	Amy	2005.01.12	EARPHONE JACK
	Alex	2005.01.12	NO.
	Rex	2005.01.12	TPJ-3A34C

SCALE 5/1