

REV. LTR.	DESCRIPTION	SIGN	DATE
3 X2	Product anchor pole changed size tolerance.	Li wenhui	2009.12.15
4 X1	Change the post slot size	Leiyu	2010.11.06

Ordering information:

TDJ-A1410-□□□□0A S 0 1

(1) (2) (3) (4) (5) (6) (7) (8) (9)

(1): Series type: DC=DC POWER JACK

(2): Series No.

(3): Schematic option: A,B

(4): Center pin diameter:

H=∅2.0 I=∅2.35 J=∅2.5

(5): Material of housing:

9T=PA9T 46=PA46

(6): Housing color:

Zero— 0A=Black (Standard)

(7): Terminal plating

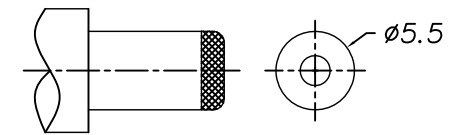
S=Silver(Ag)

(8): Special option:

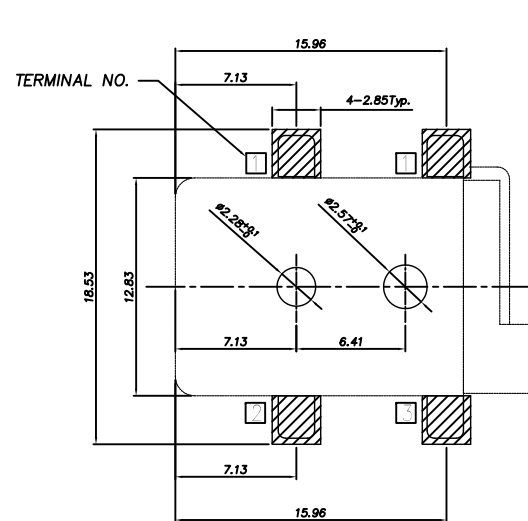
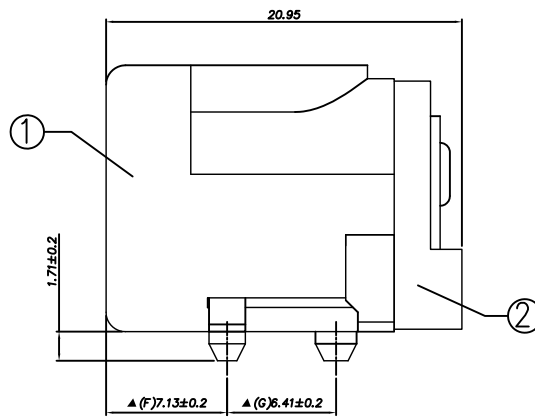
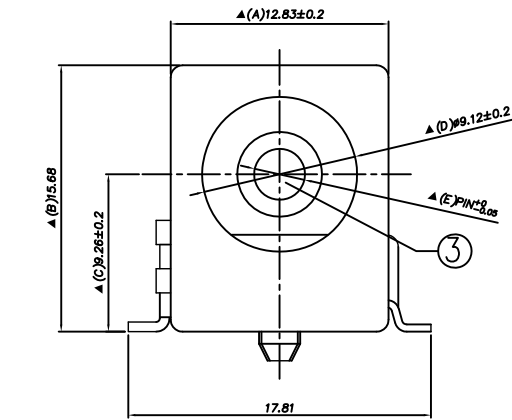
Zero— 0=No special option

(9): Packing mode:

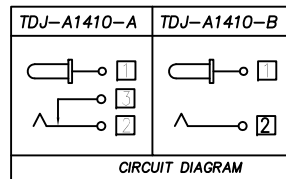
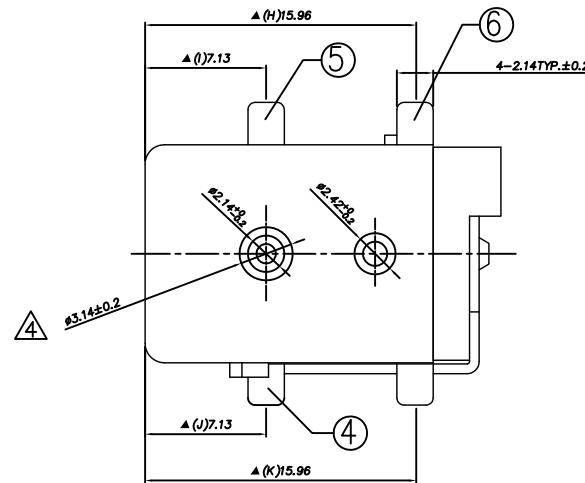
1=Tape reel packing



DC MATE PLUG



Recommended PCB Layout(Tolerance±0.05)
(Copper-sided View)



CIRCUIT DIAGRAM

□ : TERMINAL NO.

Model No.	TDJ-A1410- <u>H</u>	TDJ-A1410- <u>I</u>	TDJ-A1410- <u>J</u>
PIN	∅2.0	∅2.35	∅2.5

SPECIFICATION

- Rating : DC 20V 5A;
- Contact resistance: ≤30mΩ;
- Insulation resistance: ≥100MΩ (DC500V);
- Withstand voltage: 500VAC ;
- Insertion and extraction force: 3-30N;
- life test: 5,000 cycles;
- Operation temperature range:-20°C~70°C;
- Preservative temperature range:-40°C~85°C;
- Sign"▲" is importance dimension.

6	Shunt terminal	<input type="checkbox"/>	1	Brass t=0.4	TDJ-A1410-03(WP-1113)	Silver plating
5	Tip spring	<input checked="" type="checkbox"/>	1	Phosphor bronze t=0.3	TDJ-A1410-02(TP-1115)	Silver plating
4	Center pin terminal	<input type="checkbox"/>	1	Brass t=0.4	TDJ-A1410-01(WP-1114)	Silver plating
3	Center pin	<input type="checkbox"/>	1	Brass	TDJ-A1410-99H/I/J	Copper tin/Nickel plating
2	Cover		1	PA9T/PA46	TDJ-A1410-S2(GZ-1116)	
1	Housing		1	PA9T/PA46	TDJ-A1410-S1(ST-1112)	

TACLEX TACLEX ELECTRONICS CO., LTD.

TOLERANCES UNLESS OTHERWISE SPECIFIED LINEAR: ±0.30 ANGULAR: ±3°		SIGNATURES	DATE	TITLE
REVISIONS	SCALE	DRAWN	2011.5.20	DC POWER JACK
A	5/1	CHK'D	2011.5.20	NO.
		APPV'D	2011.5.20	TDJ-A1410

△			
△			
△			
△			
△			
△			
SYM	DISCIPTION	DATE	APPROVED