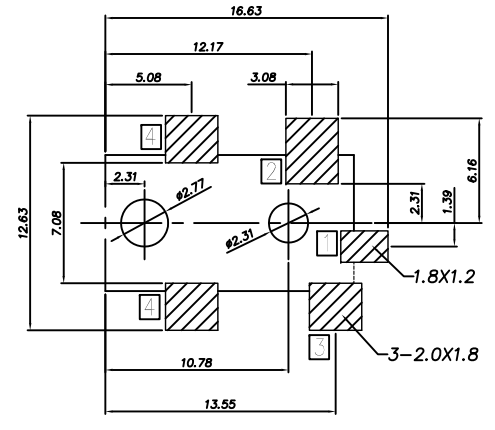
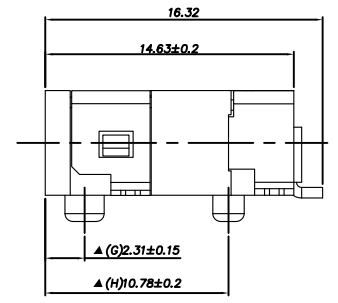
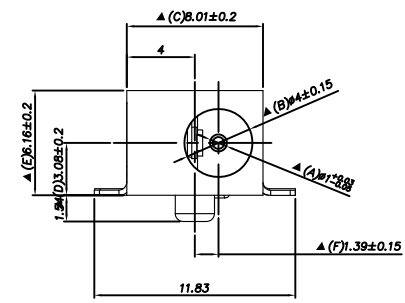
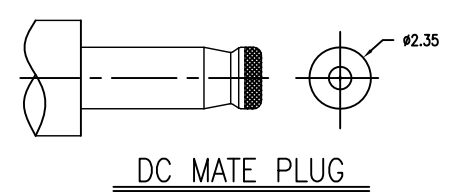
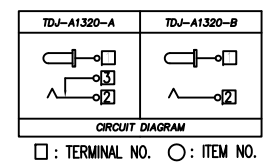
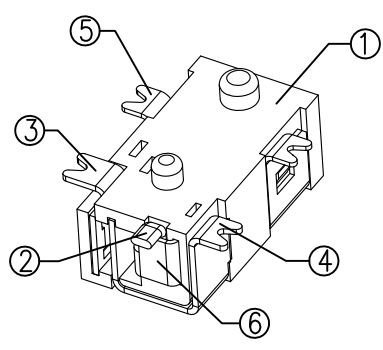
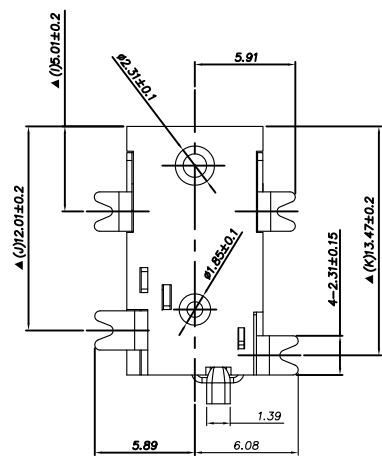


REV. LTR.	DESCRIPTION	SIGN	DATE
△X1	Change the insertion and extraction force	Li wenhui	2008.1.22



Recommended PCB Layout (Tolerance±0.05)
(Copper-sided View)

Ordering information:
 TDJ-A1320 - □ A 9T 0A S 0 1
 (1) (2) (3) (4) (5) (6) (7) (8) (9)
 (1):Series type:DC=DC POWER JACK
 (2):Series No.
 (3):Schematic option: A, B
 (4):Center pin diameter: A=∅0.65
 (5):Material of housing:
 9T=PA9T (Standard) Zero
 (6):Housing color: 0A=Black
 (7):Terminal plating: S=Silver(Ag)
 (8):Special option:
 Zero 0=No special option
 (9):Packing mode: 1=Reel packing



SPECIFICATION

- Rating : DC 20V 2A;
- Contact resistance: ≤30mΩ;
After test:≤50mΩ;
- Insulation resistance: ≥100MΩ (DC500V);
- Withstand voltage: 500VAC ;
- Insertion and extraction force: 3-30N;
- life test: 5,000 cycles;
- Operation temperature range:-20°C~70°C;
- Preservative temperature range:-40°C~85°C;
- Sign"▲"is importance dimension.

⑥ Hook	1	Stainless steel 0.2t	TDJ-A1320-04(WP2-503)	Silver plating
⑤ Earth terminal	1	Brass 0.2.t	TDJ-A1320-03(JA-505)	Silver plating
④ Shunt terminal	1	Brass 0.25.t	TDJ-A1320-02(WP1-502)	Silver plating
③ Tip spring	1	Beryllium bronze 0.25t	TDJ-A1320-01(TP-504)	Silver plating
② Center pin	1	Phosphor bronze	TDJ-A1320-99A(PZ-506)	Silver plating
① Housing	1	PA9T	TDJ-A1320-S1(ST-501)	

TACLEX TACLEX ELECTRONICS CO., LTD.

TOLERANCES UNLESS OTHERWISE SPECIFIED LINEAR:±0.30 ANGULAR: ±3°	SIGNATURES		DATE	TITLE
	DRAWN	Johnson	2011.5.20	DC POWER JACK
	CHK'D	Alex	2011.5.20	NO.
REVISIONS	SCALE	APPV'D		
A	5/1	Rex	2011.5.20	TDJ-A1320

△			
△			
△			
△			
△			
SYM	DISCIPTION	DATE	APPROVED
1			
2			
3			