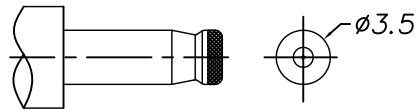
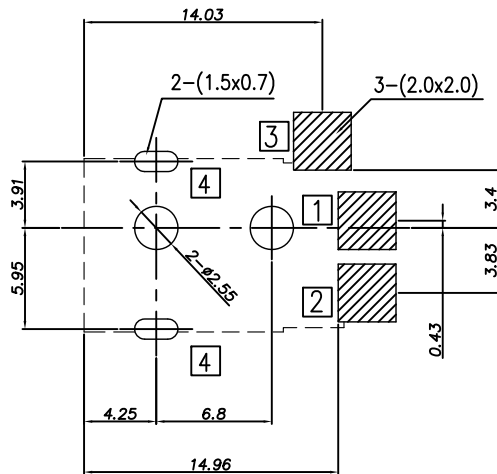


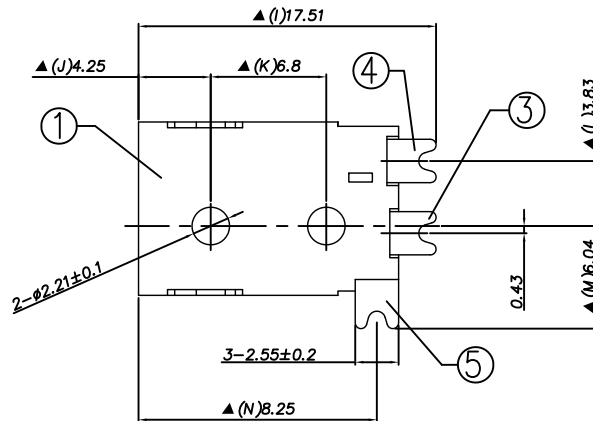
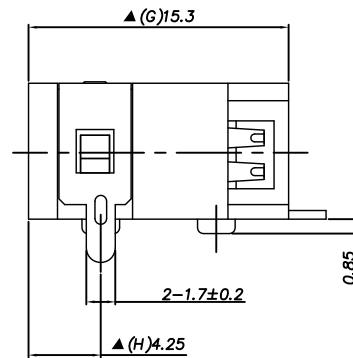
P. C. B Layout (Top view)



DC MATE PLUG

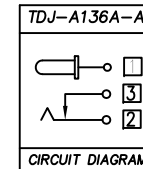
SPECIFICATION

1. Rating : DC 12V 1A;
2. Contact resistance: $\leq 30m\Omega$;
3. Insulation resistance: $\geq 100M\Omega$ (DC500V);
4. Withstand voltage: 500VAC ;
5. Insertion and extraction force: 3-30N;
6. life test: 5,000 cycles;
7. Operation temperature range: $-20^{\circ}C \sim 70^{\circ}C$;
8. Preservative temperature range: $-40^{\circ}C \sim 85^{\circ}C$;
9. Sign "▲" is importance dimension.



TDJ -A 1 3 6 A - A □ LC 0A S 0 □

- (1) (2) (3) (4) (5) (6) (7) (8) (9)
- (1) : Series type: DC=DC POWER JACK
 (2) : Series No.
 (3) : Schematic option: A
 (4) : Center pin diameter: C=ø1.0 , E=ø1.3
 (5) : Material of housing:
 LC=LCP
 (6) : Housing color:
 0A=Black
 (7) : Terminal plating:
 S=Silver (Ag)
 (8) : Special option:
 0=No special option
 (9) : Packing mode:
 1=Reel packing
 3=Plastic box packing



□ : TERMINAL NO.

Model No.	TDJ-A136A-C	TDJ-A136A-E
PIN	ø1.0	ø1.3

(6) Shield plate	□	1	Brass t=0.2	Tin plating
(5) Shunt terminal	□	1	Brass t=0.25	Silver plating
(4) Tip spring	□	1	Beryllium bronze t=0.3	Silver plating
(3) Center pin terminal	□	1	Brass t=0.2	Silver plating
(2) Center pin	□	1	Brass	CuSn/Nickel plating
(1) Housing	□	1	LCP	

TACLEX TACLEX ELECTRONICS CO., LTD.

TOLERANCES UNLESS OTHERWISE SPECIFIED LINEAR: ± 0.30 ANGULAR: $\pm 3^{\circ}$		SIGNATURES	DATE	TITLE
DRAWN		Johnson	2011.5.20	DC POWER JACK
CHK'D		Alex	2011.5.20	NO. TDJ-A136A
APPV'D		Rex	2011.5.20	

SYM	DISCIPTION	DATE	APPROVED
△			
△			
△			
△			
△			