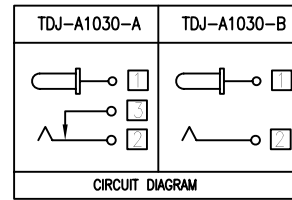
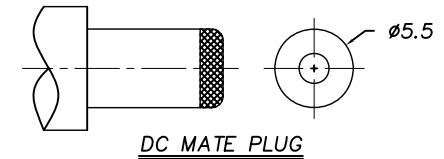


P. C. B Layout
(Copper-sided view)



□ : TERMINAL NO.

Model No.	TDJ-A1030- <u>H</u>	TDJ-A1030- <u>I</u>	TDJ-A1030- <u>J</u>
PIN	ø2.0	ø2.35	ø2.5



DC MATE PLUG

Ordering information:

- TDJ-A1030 - □ □ PB □ □ S 0 4
 (1) (2) (3) (4) (5) (6) (7) (8) (9)
 (1):Series type:DC=DC POWER JACK
 (2):Series No.
 (3):Schematic option:
 A , B
 (4):Center pin diameter:
 H=02.0 , I=02.35 , J=02.5
 (5):Material of housing:
 PB=PBT (Standard)
 (6):Housing color:
 Zero 0A=Black , 4H=Yellow(0039)
 (7):Terminal plating:
 S=Silver (Ag)
 (8):Special option:
 0=No special option
 (9):Packing mode:
 4=Bag packing

SPECIFICATION

- Rating : DC 20V 2A;
- Contact resistance: $\leq 50m\Omega$;
- Insulation resistance: $\geq 100M\Omega$ (DC500V);
- Withstand voltage: 500VAC ;
- Insertion and extraction force: 3-30N;
- life test: 5,000 cycles;
- Operation temperature range:-20°C~70°C;
- Preservative temperature range:-40°C~85°C;

⑥	Shunt terminal	③	1	Brass t=0.3	Silver plating
⑤	Tip spring	②	1	Mn steel t=0.2	Silver plating
④	Center pin terminal	①	1	Brass t=0.3	Silver plating
③	Center pin	①	1	Brass	CuSn/Nickel plating
②	Cover		1	PF	
①	Housing		1	PBT	
NO.	DESCRIPTION		QTY	MATERIAL	REMARK

TACLEX TACLEX ELECTRONICS CO., LTD.

TOLERANCES UNLESS OTHERWISE SPECIFIED LINEAR: ± 0.30 ANGULAR: $\pm 3^\circ$	SIGNATURES		DATE	TITLE
	DRAWN	Amy	2010.07.20	DC POWER JACK
	CHK'D	Alex	2010.07.20	NO.
REVISIONS	SCALE	APPV'D	Rex	2010.07.20
A	5/1			TDJ-A1030

△			
△			
△			
△			
△			
SYM	DISCRIPTION	DATE	APPROVED
1			
2			
3			