

TRIGGER SWITCH

SPECIFICATIONS

- Contact Rating : 18A 125VDC 25A 125VAC
1HP 125VAC 2HP 250VAC 13(13A) 250V~ 5E4
- Contact Resistance : 50mΩ (MAX)
- Insulation Resistance : 500 MΩ (MIN)
- Dielectric Strength : 1800V AC-1minute
- Electric Life : 50,000 cycles
- Operating Force : 32 ± 5N (47N MAX)
- Travel : 5.2mm

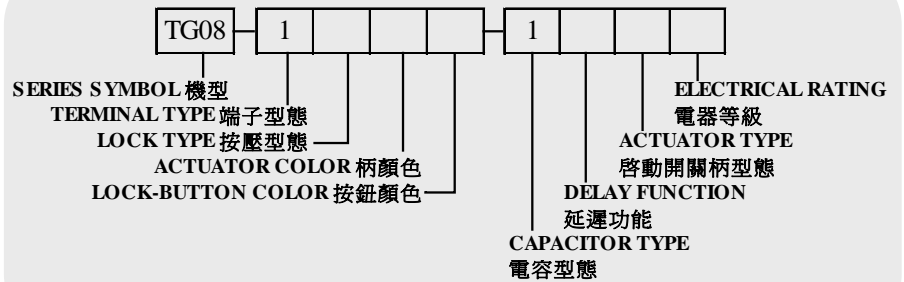
PART NO TG08



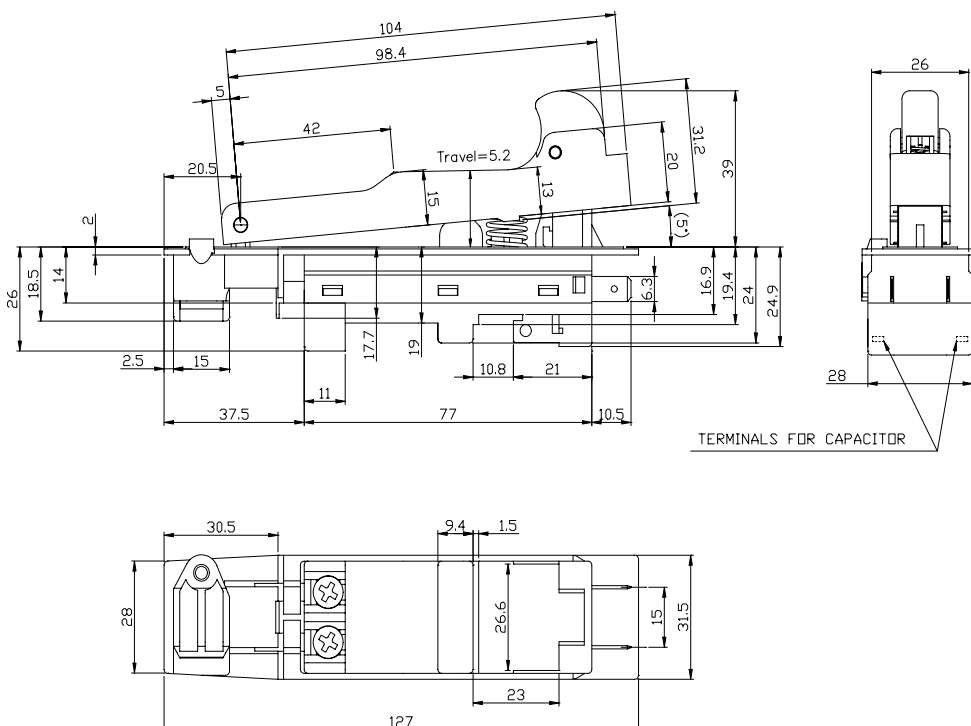
APPLICATIONS&FEATURES

- High reliability
- Standard & custom design
- Power tools
- Safety lock button
- Industrial equipment
- High current rating
- Double pole double throw

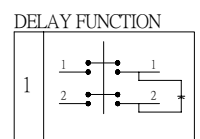
PART NUMBERING SYSTEM



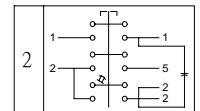
DIMENSIONS in mm



LOCK TYPE	
1	LOCK ON
2	LOCK OFF
3	LOCK ON/OFF



CAPACITOR TYPE	
1	YES
0	NO



ACTUATOR COLOR	
0	BLACK
1	ORANGE

LOCK-BUTTON COLOR	
0	BLACK
1	ORANGE

ELECTRICAL RATING

CODE	(UL&CSA)	(ENEC)
A	16A 125VDC	13(13)A 250VAC
	20A 125VAC	
	1HP 125VAC	
	2HP 250VAC	
B	18A 125VDC	13(13)A 250VAC
	25A 125VAC	
	1HP 125VAC	
	2HP 250VAC	