

TRIGGER SWITCH

SPECIFICATIONS

- Contact Rating : 3(3)A 250VAC
- Contact Resistance : 20mΩ (MAX)
- Insulation Resistance : 500 MΩ (MIN)
- Dielectric Strength : 1500V AC-1minute
- Electric Life : 50,000 cycles
- Operating Force : 2500 ± 300 gram
- Travel : 7.5mm

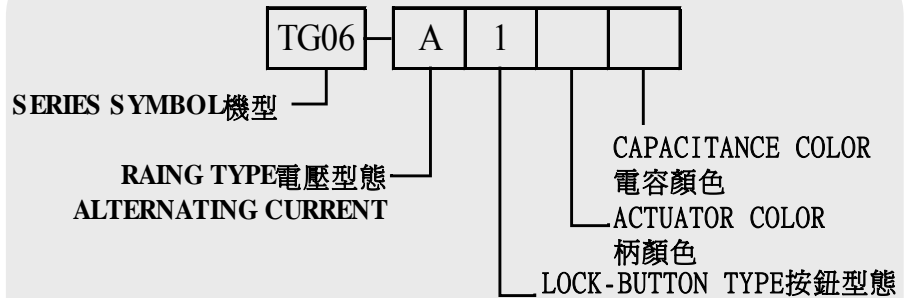
PART NO TG06



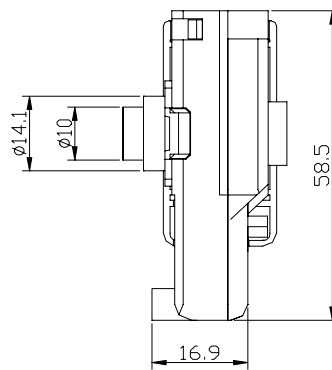
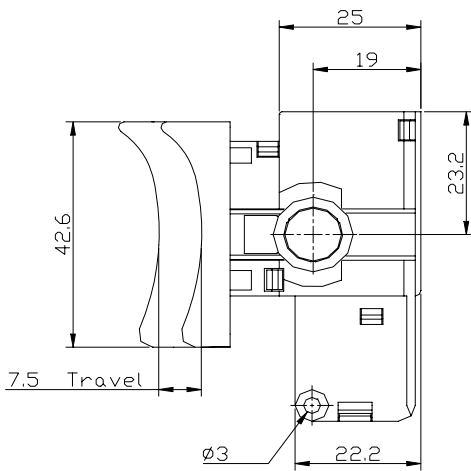
APPLICATIONS&FEATURES

- Strong reliable construction
- Various speed with reversing lever
- Standard & customer design
- Power tools
- Safety lock button
- Single pole single throw

PART NUMBERING SYSTEM

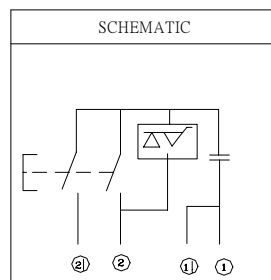
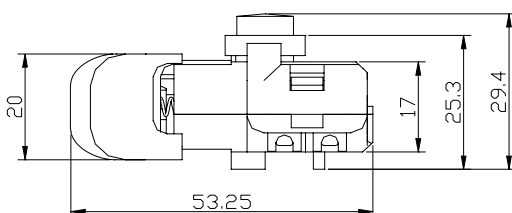


DIMENSIONS in mm



ACTUATOR COLOR

1	BLACK
2	RED



CAPACITANCE COLOR

NONE	YELLLOW (EN 132400)
1	BLACK (EN 60384-14)