

# TRIGGER SWITCH

## SPECIFICATIONS

- Contact Rating : 10-5GP/250~20-5GP/125~1-1/2HP 250V AC 10(10A) 250V~
- Inrush Current : 100A / 24V DC
- Contact Resistance : 20mΩ (MAX)
- Insulation Resistance : 500 MΩ (MIN)
- Dielectric Strength : 1500V AC-1minute
- Electric Life : 100,000 cycles
- Operating Force : 3000 ± 300 gram
- Travel : 7.5mm

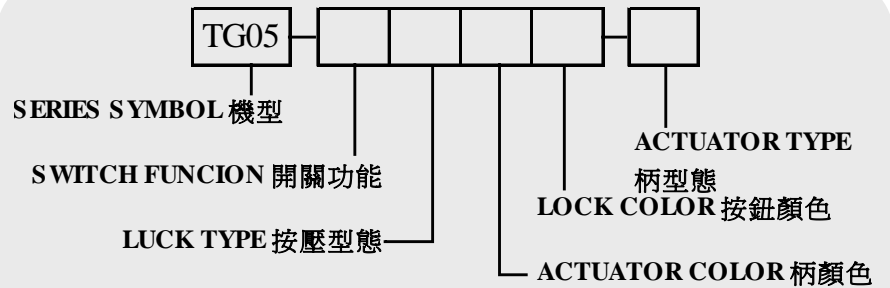
## PART NO TG05



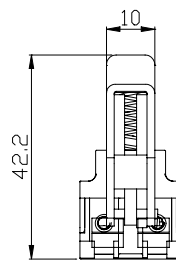
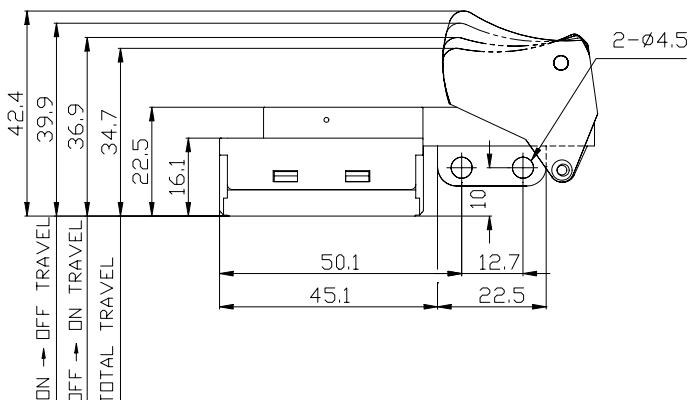
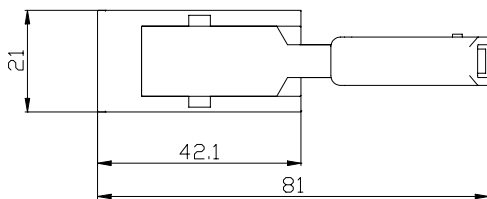
## APPLICATIONS&FEATURES

- DC rechargeable tool
- Power tools
- Safety lock button
- Double pole double throw
- With brake current

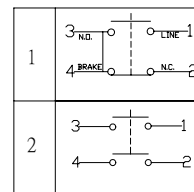
## PART NUMBERING SYSTEM



## DIMENSIONS in mm



### SWITCH FUNCTION



### ACTUATOR COLOR

B	BLACK
O	ORANGE
Y	YELLOW
R	RED

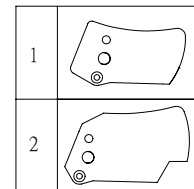
### LOCK COLOR

B	BLACK
O	ORANGE
Y	YELLOW
R	RED

### LOCK TYPE

1	NONE
2	LOCK ON
3	LOCK OFF

### ACTUATOR TYPE



### SCHEMATIC

