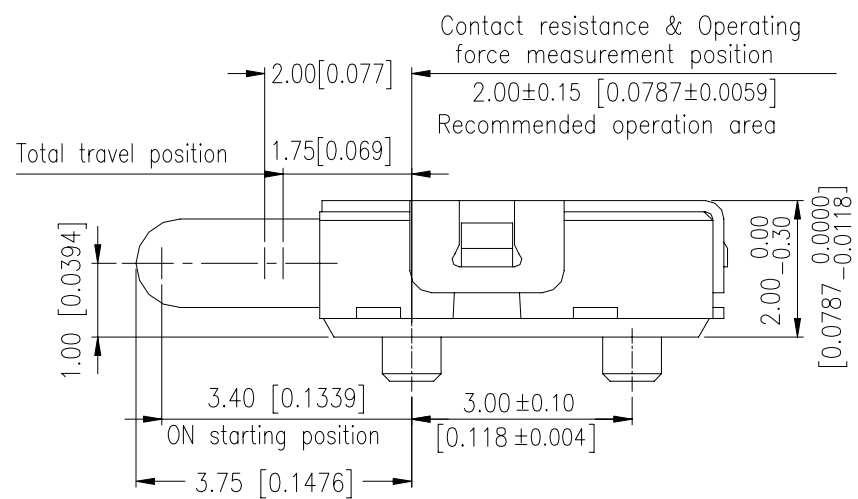
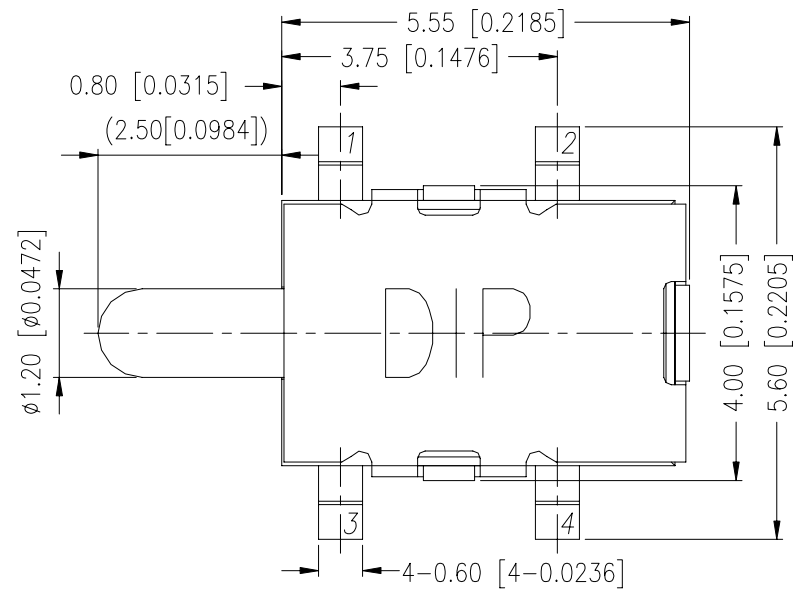
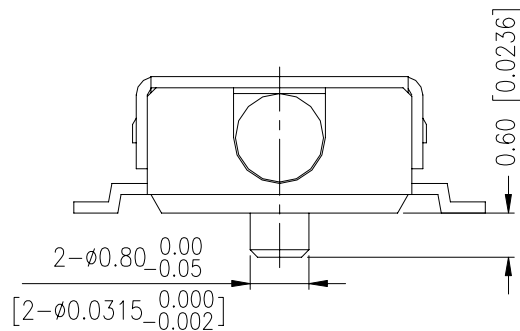
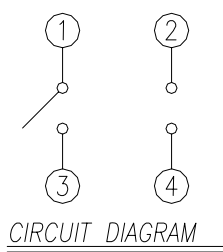
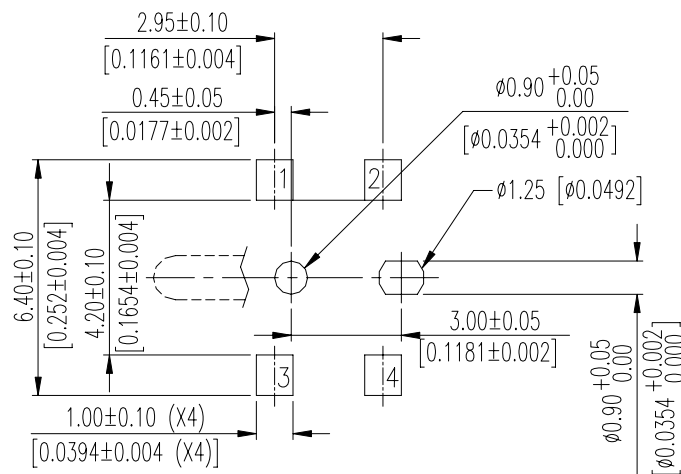


FTE SERIES



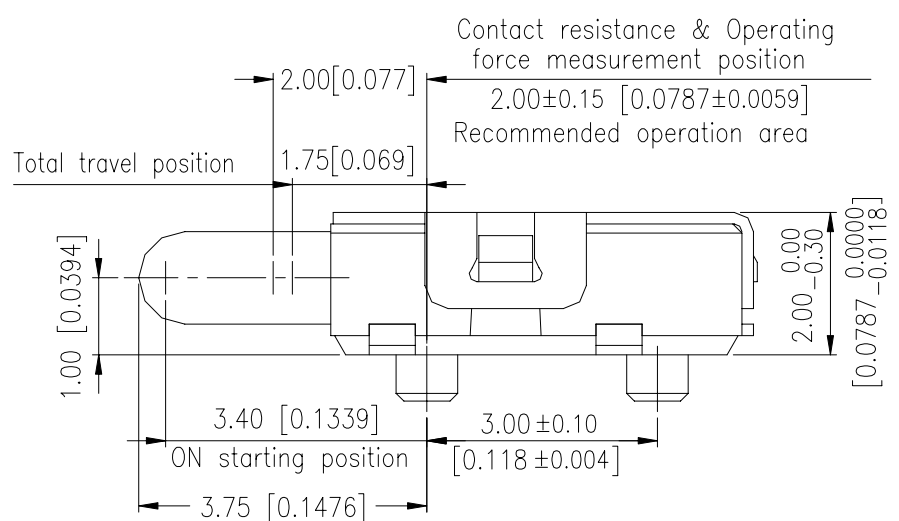
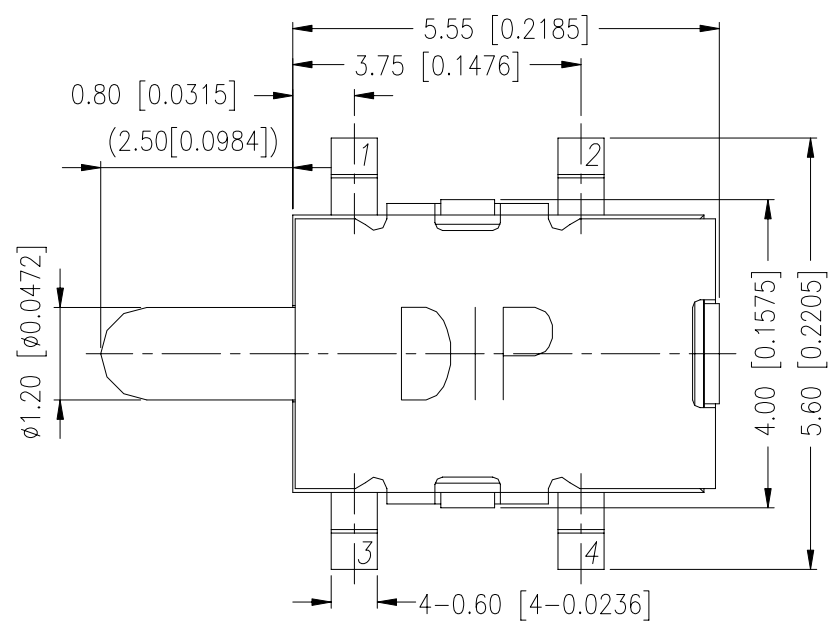
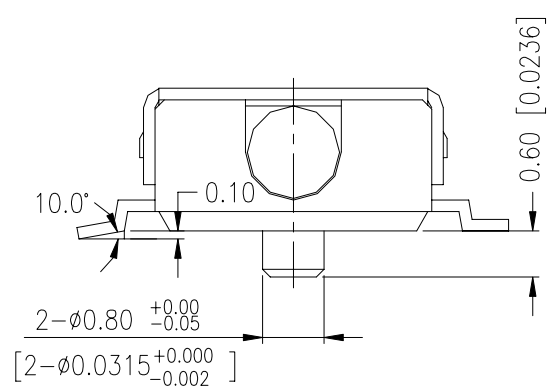
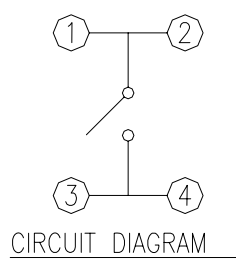
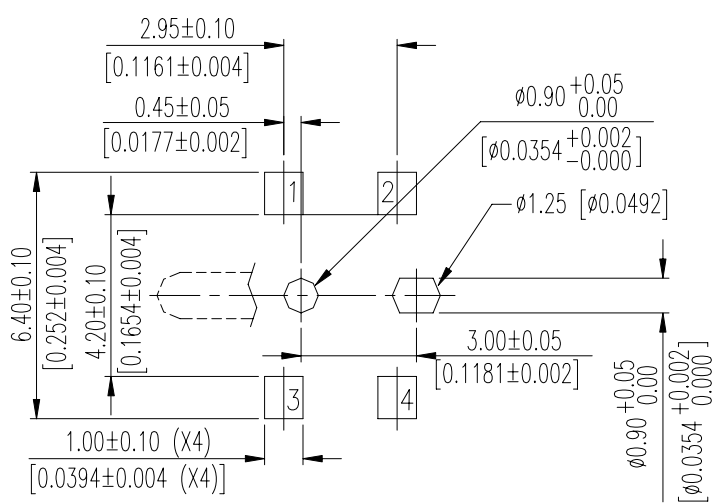
DIMENSIONS

FTE-1C-V



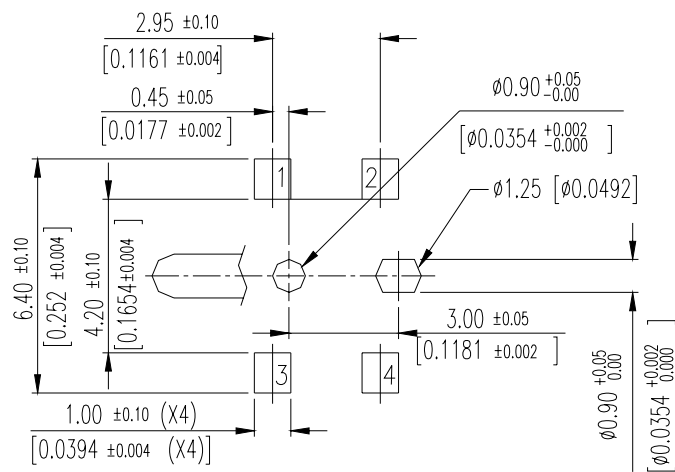
General Tolerance : ±0.20.

FTE-2C-V

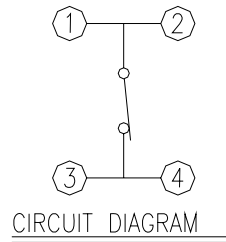
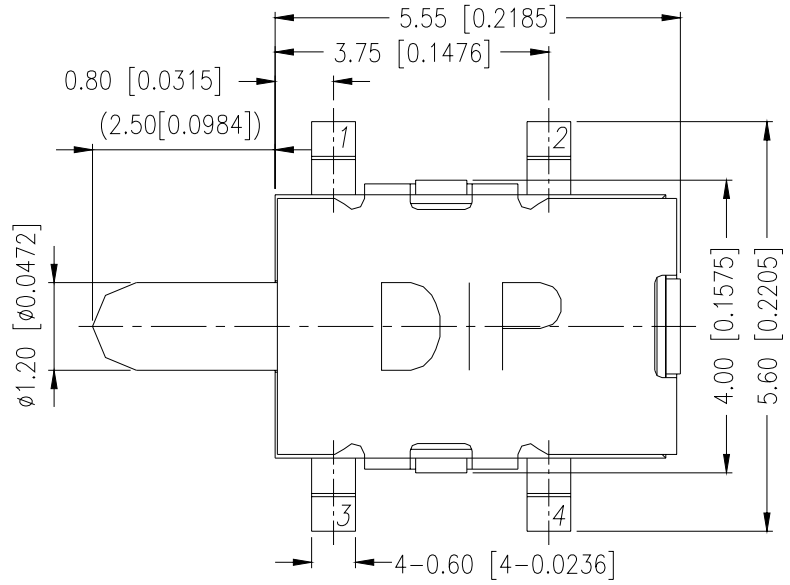


General Tolerance : ±0.20.

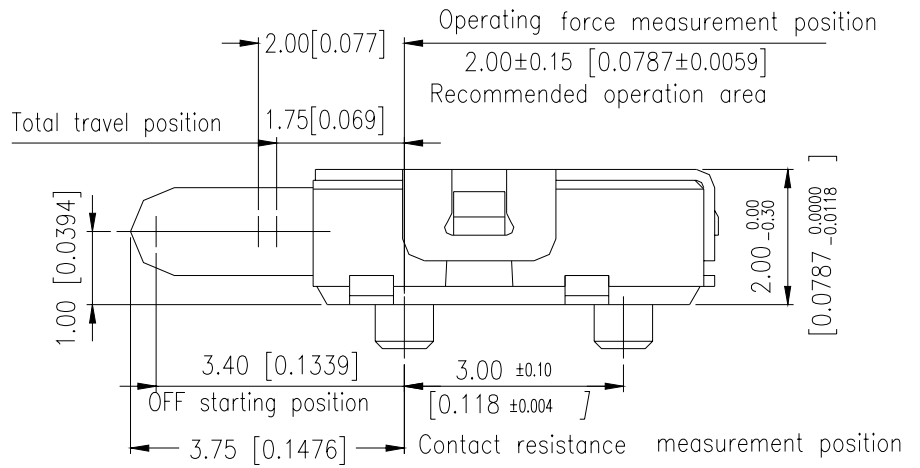
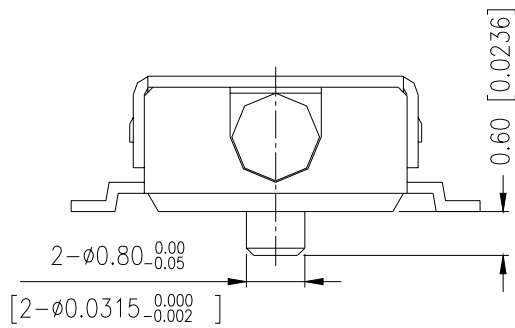
FTE-3C-V



P.C.B LAYOUT



CIRCUIT DIAGRAM

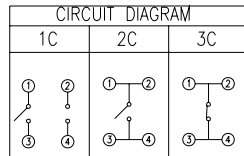


General Tolerance : ±0.20.

HOW TO ORDER

FTE - □ □ □ - V - □

- Package :
T/R = Tape & Reel
- V = Lead Free Solderable
- = With Silver Plated
- A = With Gold Plated
- C = With Post
- = Without Post



Detector Switch

SPECIFICATION

△MECHANICAL

- Operation Force: 50gf max.
- Operation Temperature Range: -10°C to +60°C.
- Storage Temperature Range: -40°C to +85°C.

△ELECTRICAL

- Electrical Life: 100,000 cycles
- Rating: 1mA,5VDC
- Contact Resistance: 1Ω max
- Insulation Resistance: 100MΩ min
- Dielectric Strength: 100VAC / 1 minute

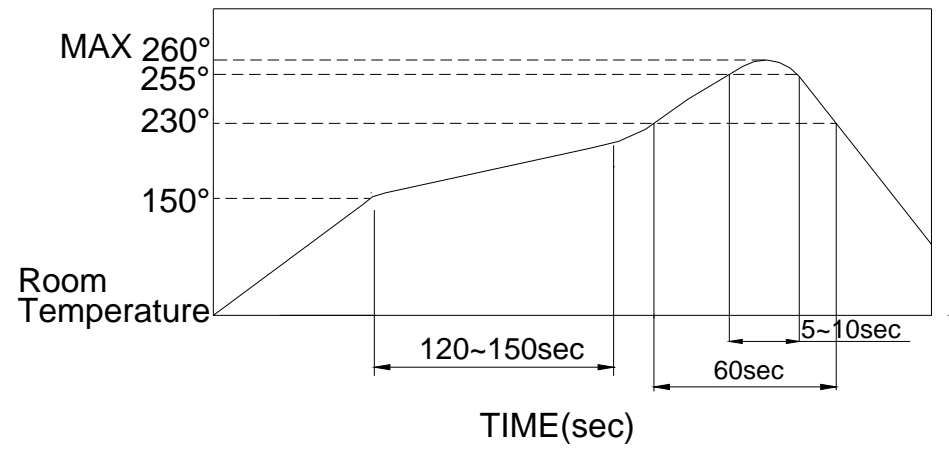
MATERIAL

- △COVER: Stainless Steel
- △BASE: UL94V-0 Nylon High-Temp Thermoplastic.
Color: Black
- △STEM: UL94V-0 Nylon High-Temp Thermoplastic.
Color: Black
- △CONTACT: Stainless with silver plated
Stainless with Au plated
- △TERMINAL : Brass with silver plated
Brass with Au plated
- △SPRING : Piano Wire.

SOLDERING PROCESS

- △ **HAND SOLDERING:** Use a soldering iron of 30 watts, controlled at 350°C approximately max 5 seconds while applying.
- △ **REFLOW SOLDERING:** When applying reflow soldering, the peak temperature or the reflow Oven should be set at 260°C max.
- △ **Reflow Temperature Profile:**

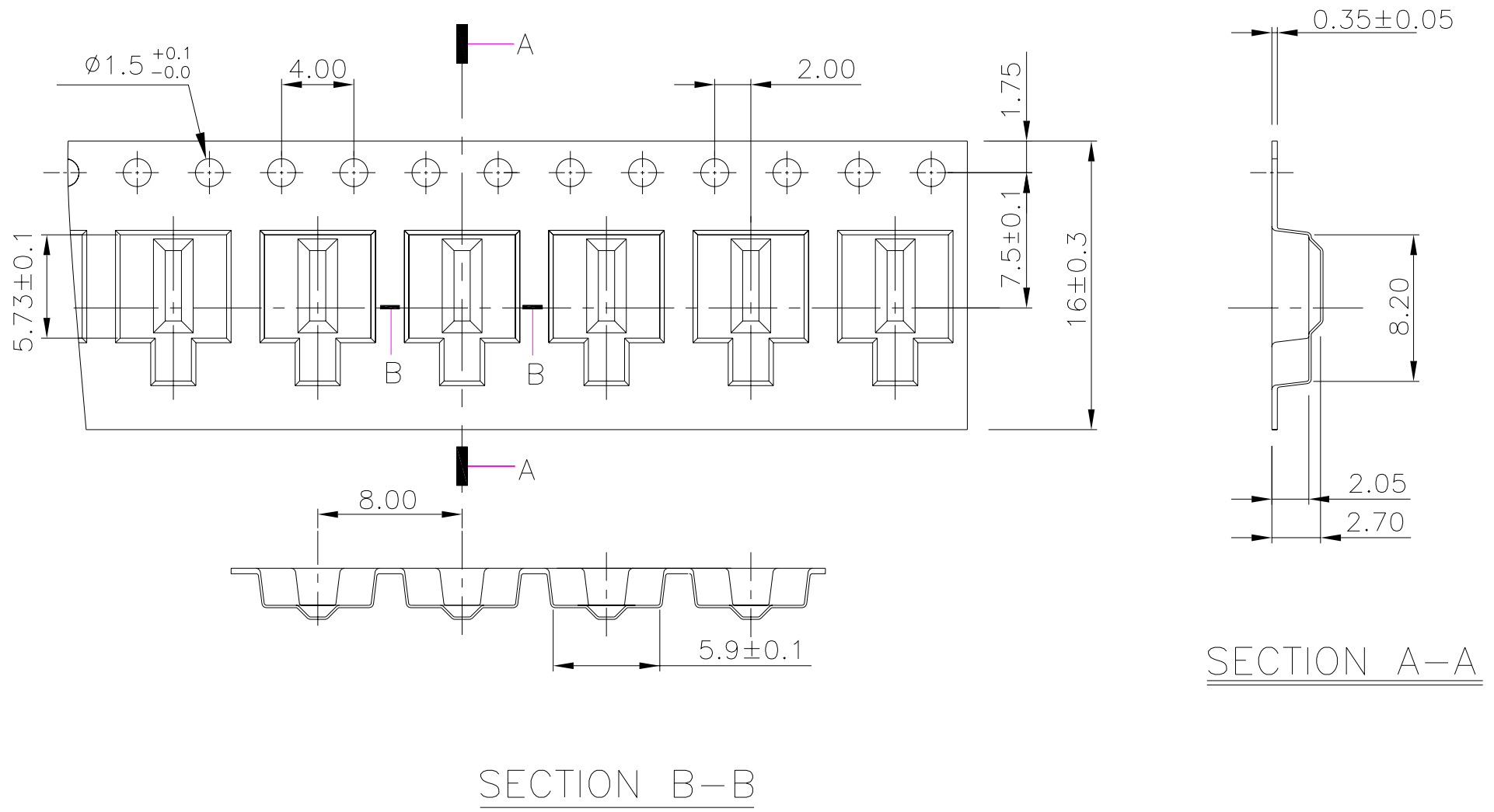
△ Temperature Profile :



PACKING

Part Number	Number Per TUBEI	Number Per Reel
FTE	-	3000

REEL



General Tolerance : ±0.10.