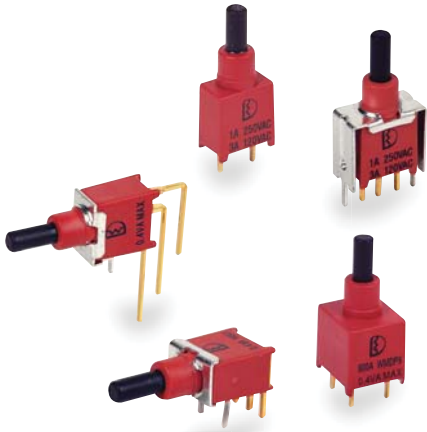


Sealed Sub-Miniature Pushbutton Switches **8A SERIES**



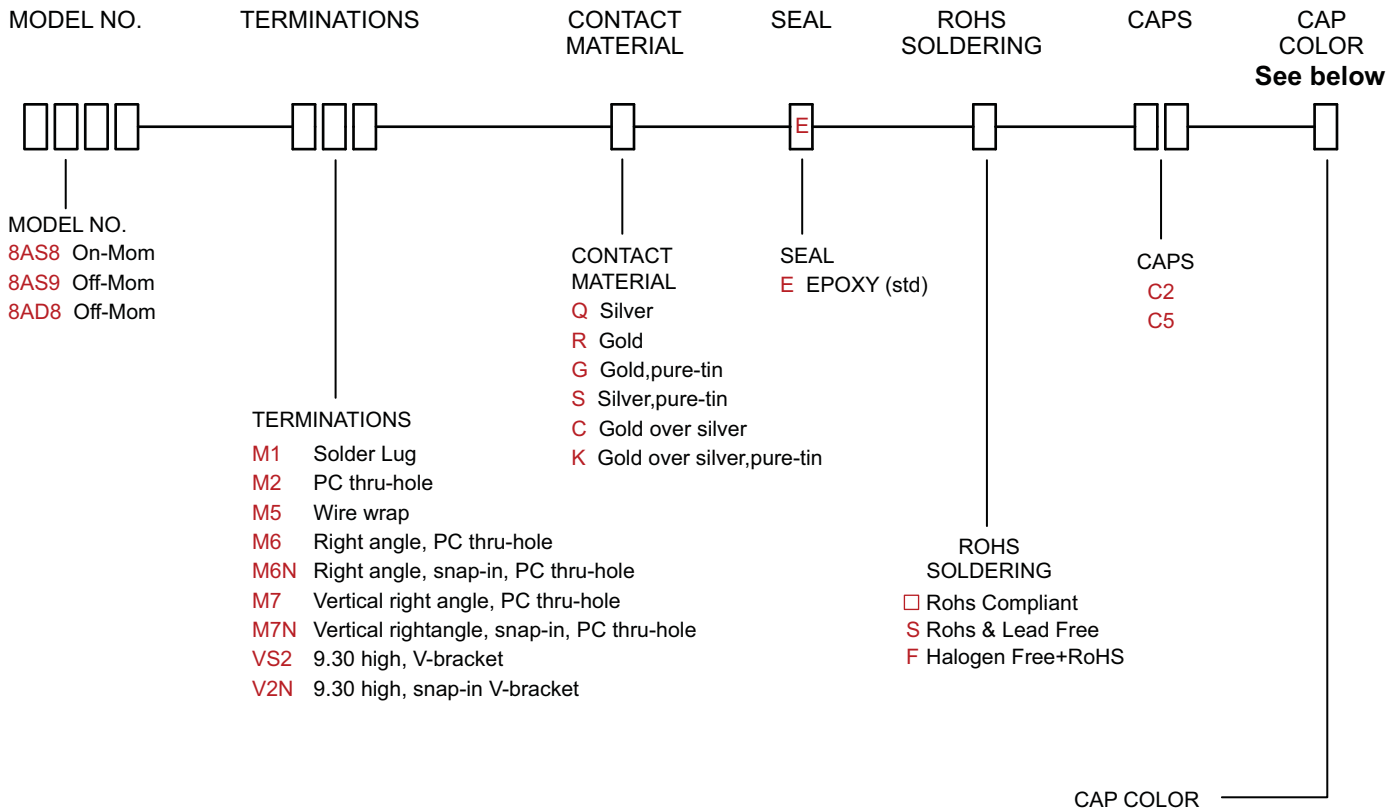
SPECIFICATIONS

- CONTACT RATING:** Dependent upon contact material See Page 132.
- MECHANICAL LIFE:** 50,000 make-and-break cycles.
- CONTACT RESISTANCE:** 20mΩ max. initial @ 2-4VDC
100mA for both silver and gold plated contacts.
- INSULATION RESISTANCE:** 1,000MΩ min.
- DIELECTRIC STRENGTH:** 1,000 V RMS@sea level.
- OPERATING TEMPERATURE:** -30°C to 85°C.

MATERIALS

- CASE & BUSHING:** Glass filled nylon 66, flame retardand, heat stabilized (UL94V-0).
- PLUNGER:** Thermoplastic Polyester (UL 94V-0), with internal O-ring seal.
- SWITCH SUPPORT:** Brass or steel electrotin plated.
- CONTACT:** Copper alloy,with silver or gold plated.
(See Page 132)

HOW TO ORDER



CAP COLOR
See below

ITEM NO	COLOR
1	White
2	Black (Std)
3	Red
4	Orange
5	Yellow
6	Green
7	Blue
8	Brown
9	Gray

Pushbutton Switches

SWITCH FUNCTION

NO. POLES	UL/CSA MODEL NO.	MODEL NO.	SWITCH FUNCTION		CONNECTED TERMINALS / SCHEMATIC	
			POS.1	POS.2	POS.1	POS.2
SP	Q28A18	8AS8	ON	MOM	2-1 NC 1 • 2 (COMM) • 3 NO	2-3 NC 1 • 2 (COMM) • 3 NO
	Q28A19	8AS9	OFF	MOM	OPEN	1-3
DP	Q28A29	8AD9	OFF	MOM	OPEN	1-3,4-6

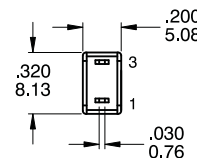
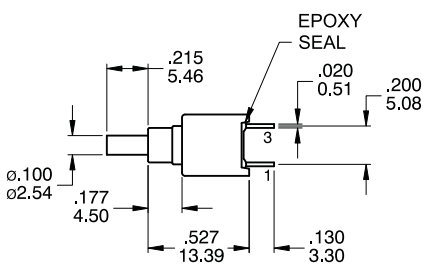
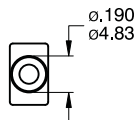
MOM=MOMENTARY

POLE OPTIONS



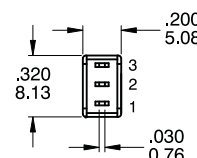
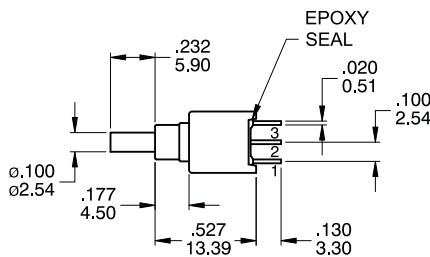
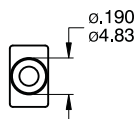
SPST

Part No. Shown : 8AS9M2RE



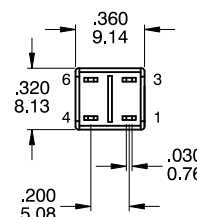
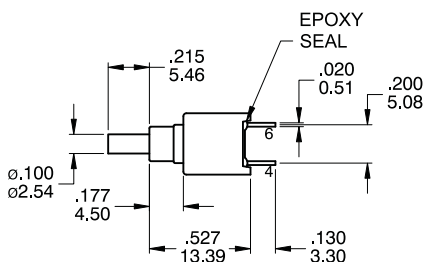
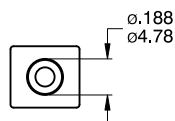
SPDT

Part No. Shown : 8AS8M2RE



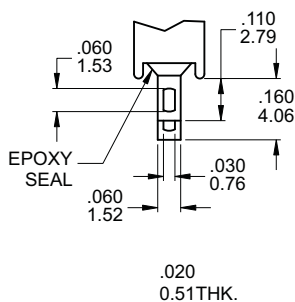
DPST

Part No. Shown : 8AD9M2RE

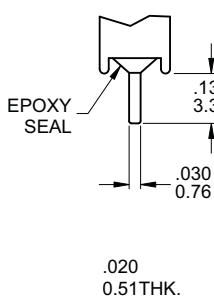


TERMINATION OPTIONS

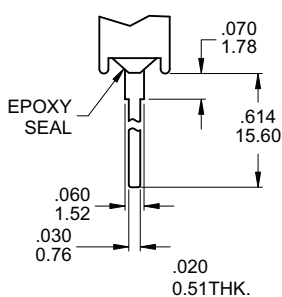
M1 SOLDER LUG



M2 P.C. MOUNTING



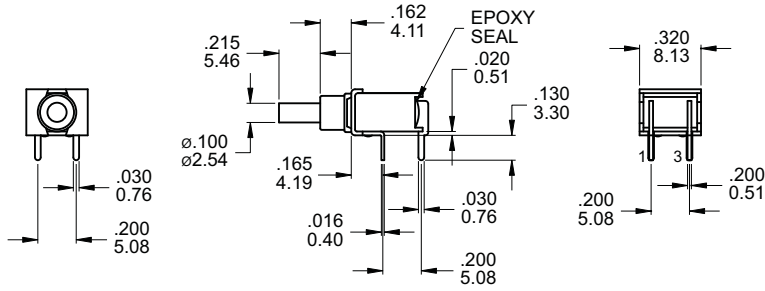
M5 WIRE WRAP



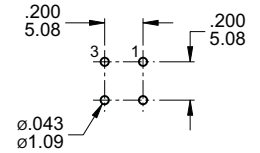
OTHER TERMINATION OPTIONS

- M6 RIGHT ANGLE P.C. MOUNT
- M6N RIGHT ANGLE P.C. MOUNT WITH SNP-IN BRACKET
- M7 RIGHT ANGLE P.C. MOUNT
- VS2 VERTICAL BRACKET P.C. MOUNT

M6



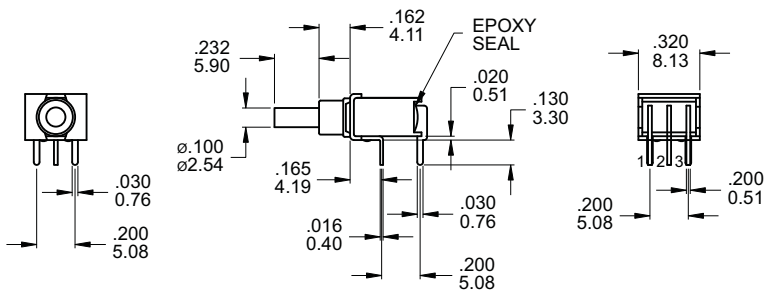
P.C. MOUNTING



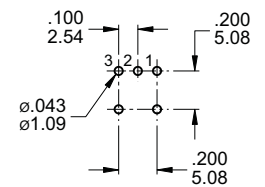
SPST

Part No. Shown : 8AS9M6RE

M6



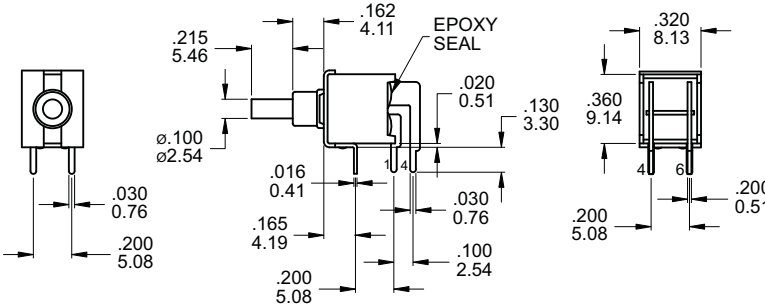
P.C. MOUNTING



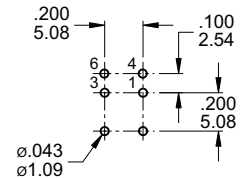
SPDT

Part No. Shown : 8AS8M6RE

M6



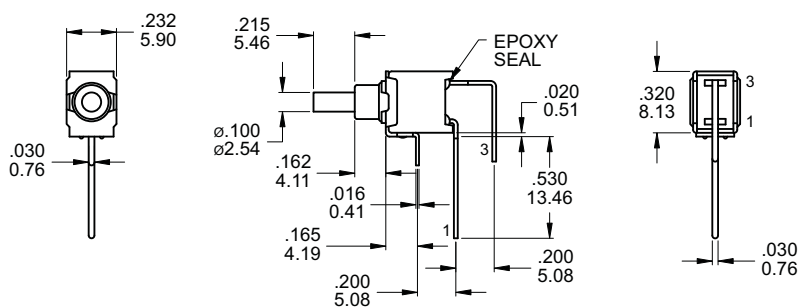
P.C. MOUNTING



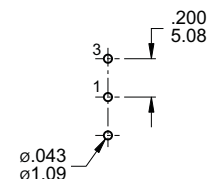
DPST

Part No. Shown : 8AD9M6RE

M7



P.C. MOUNTING



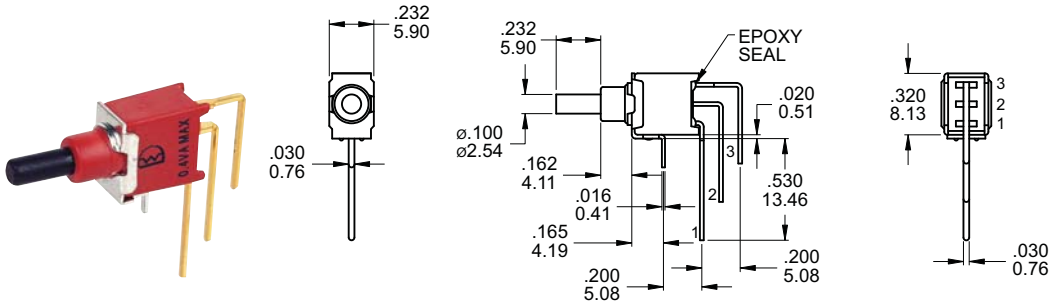
SPST

Part No. Shown : 8AS9M7RE

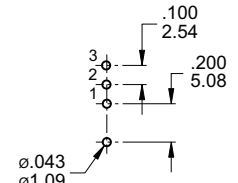
Pushbutton Switches

Sealed Sub-Miniature Pushbutton Switches **8A SERIES**

M7



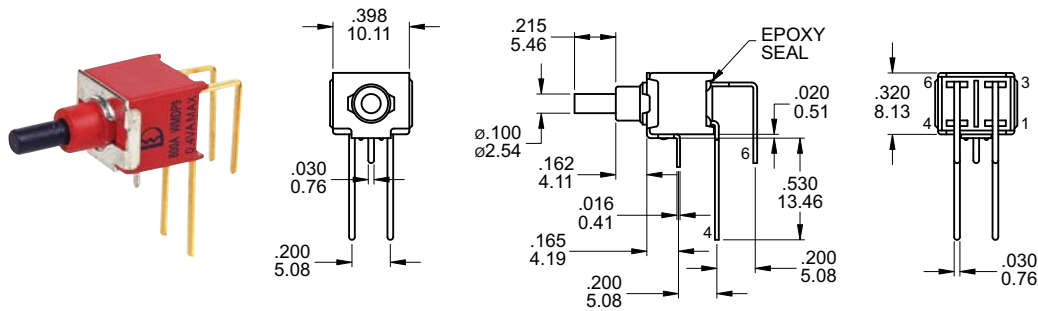
P.C. MOUNTING



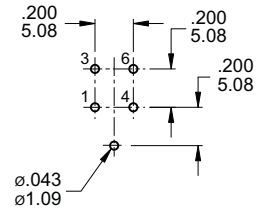
SPDT

Part No. Shown : 8AS8M7RE

M7



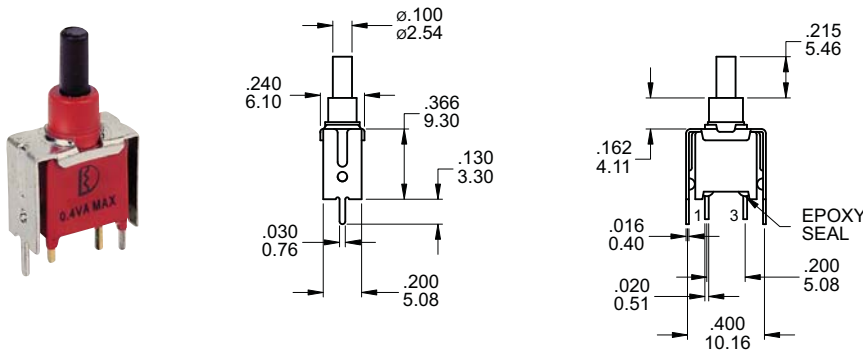
P.C. MOUNTING



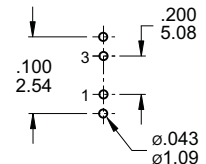
DPST

Part No. Shown : 8AD9M7RE

VS2



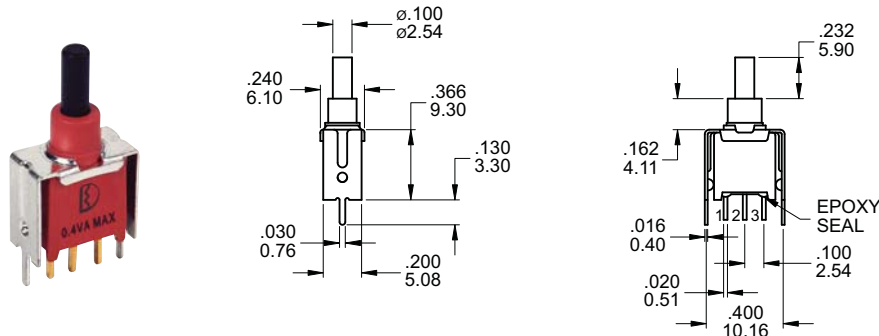
P.C. MOUNTING



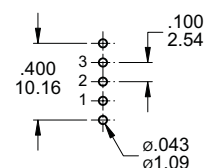
SPST

Part No. Shown : 8AS9V2RE

VS2



P.C. MOUNTING

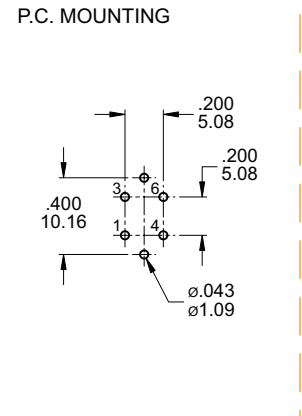
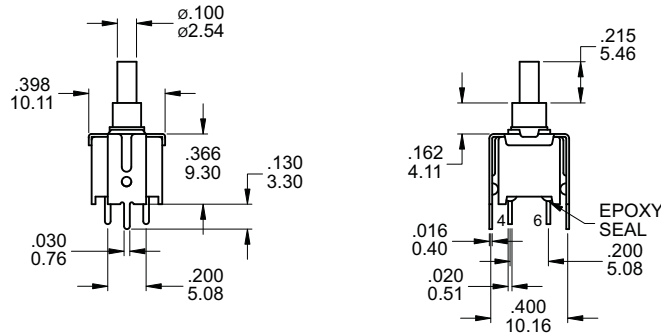


SPDT

Part No. Shown : 8AS8V2RE

Pushbutton Switches

VS2

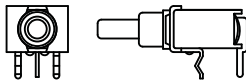


DPST

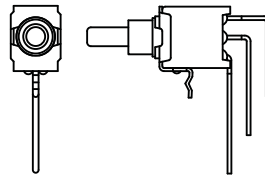
Part No. Shown : 8AD9V2RE

SNAP-IN TERMINATION OPTIONS

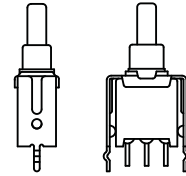
M6N



M7N



V2N



CONTACT MATERIAL OPTIONS

	CONTACT PLATING	TERMINAL PLATING	RATINGS
Q	Silver	Q = Gold flash over silver	1 Amps with resistant load @ 120VAC or 28VDC
S		S = Gold flash over silver,pure - tin	
C	Gold over Silver	C = Gold over silver	
K		K = Gold over silver,pure - tin	
R	Gold	R = Gold	0.4 Volt - Amps (VA) max. @ 20V max. (AC or DC)
G		G = Gold,pure - tin	

SOLDERING PROCESSES

MANUAL SOLDERING : Use soldering iron of 30 watts, controlled at 350°C approximately 5 seconds while applying solder.

WAVE SOLDERING : Recommended Soldering Temperature : 260 ± 5°C
Duration of Solder Immersion : Max 5sec.
(PCB is 1.6mm in thickness)

SOLDERING : Vapor phase

Pushbutton Switches