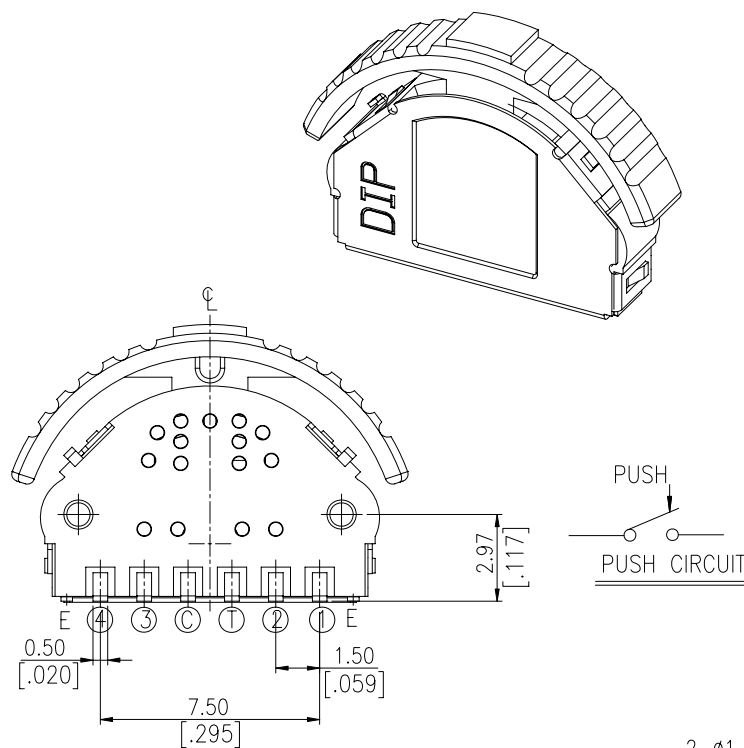
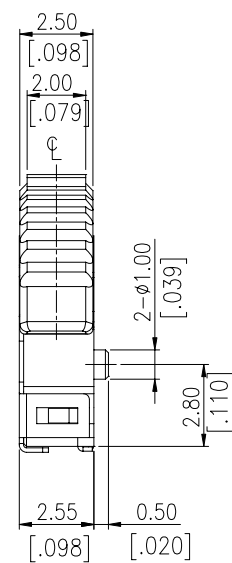
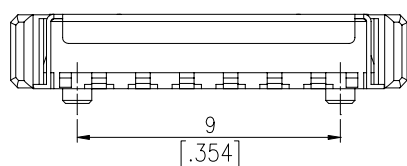
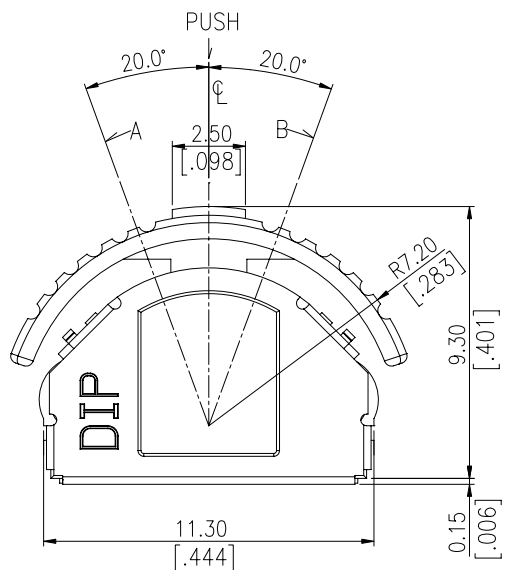
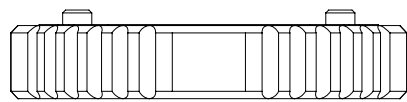


# PUSH & LEVER SERIES



## DIMENSIONS

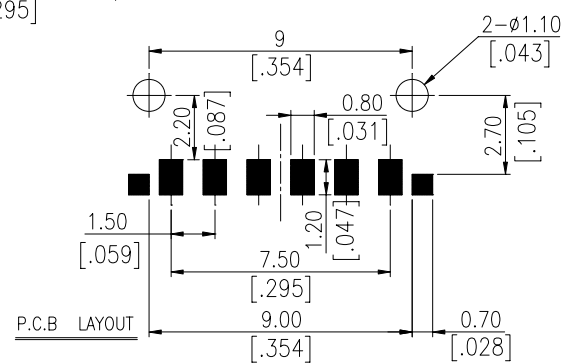
PLJ



ANGLE	A			B		
	20°	(16°)	(8°)	(8°)	(16°)	20°
①	■	■				
②	■					
③						■
④				■	■	■
C	■	■	■	■	■	■

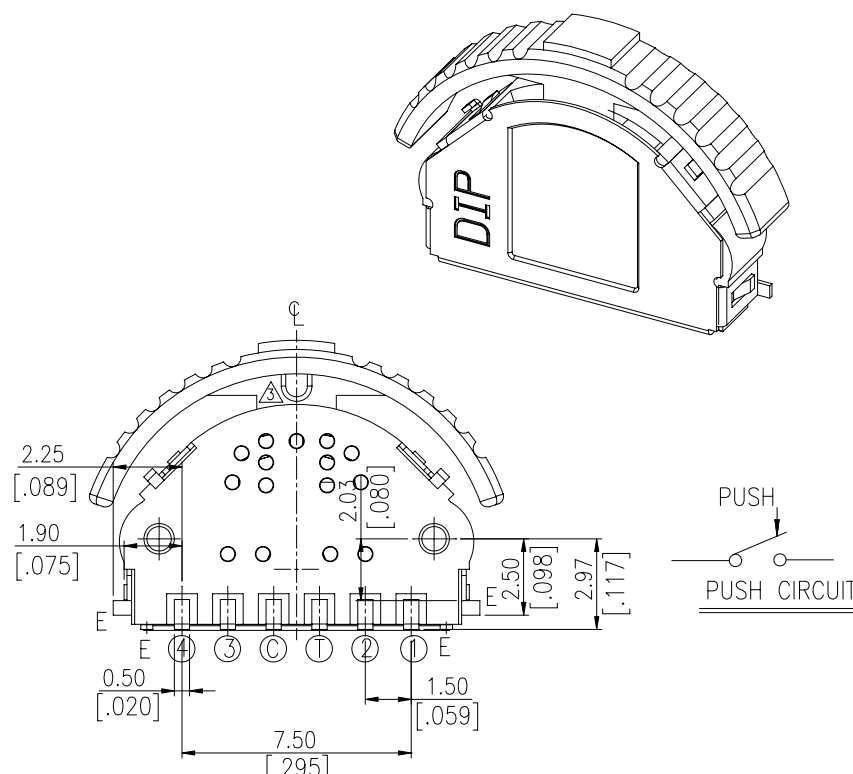
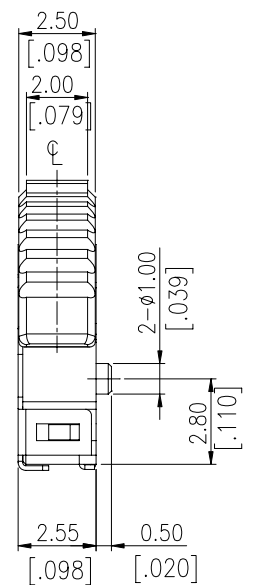
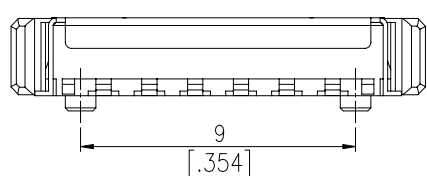
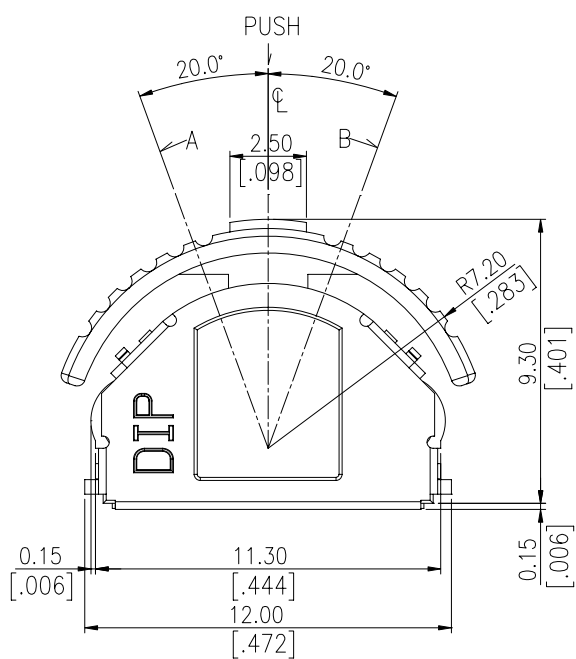
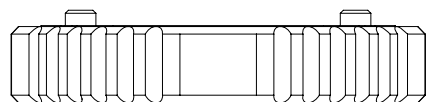
\* E : ERTHING TERMINAL  
\* ■ : ON POSITION

CIRCUIT DIAGRAM



General Tolerance : ±0.20mm

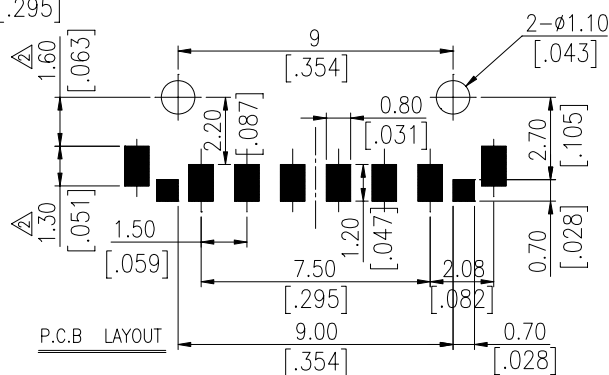
PLJG



ANGLE	A			B		
	20°	(16°)	(8°)	(8°)	(16°)	20°
①	■	■				
②	■					
③						■
④				■	■	■
C	■	■	■	■	■	■

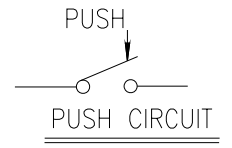
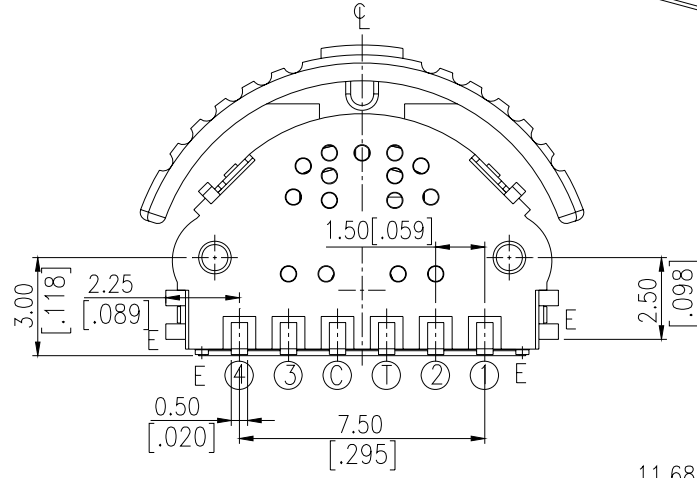
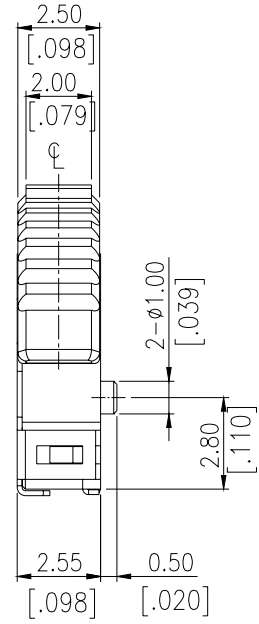
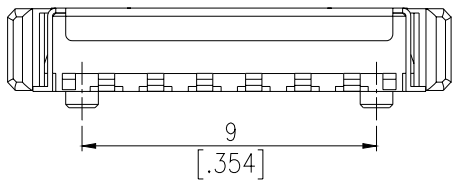
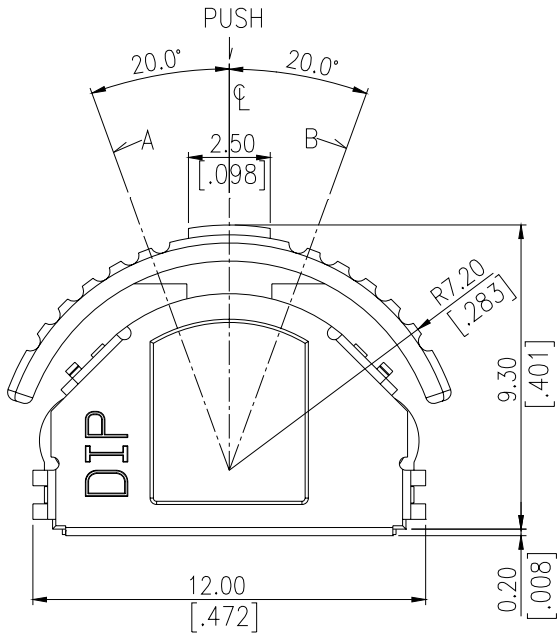
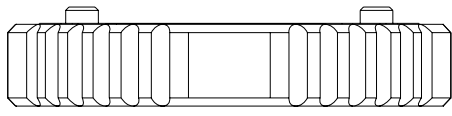
\* E : ERTHING TERMINAL  
\* ■ : ON POSITION

CIRCUIT DIAGRAM



General Tolerance : ±0.20mm

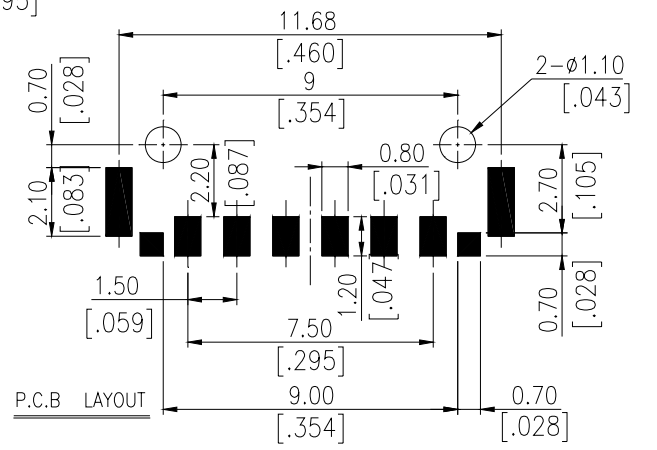
**PLJG1**



ANGLE	A		B		ANGLE
	20°	(16°)	(8°)	(8°)	
①	█				
②	█				
③					█
④				█	█
C	█		█		█

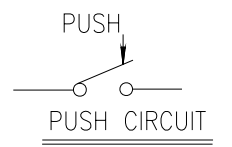
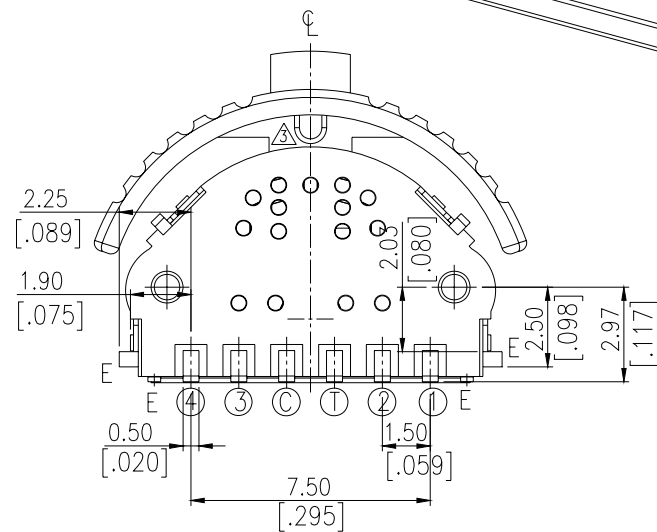
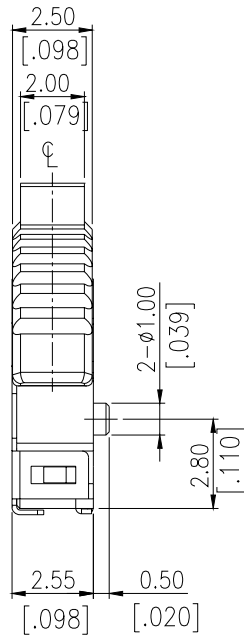
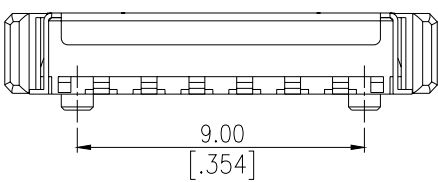
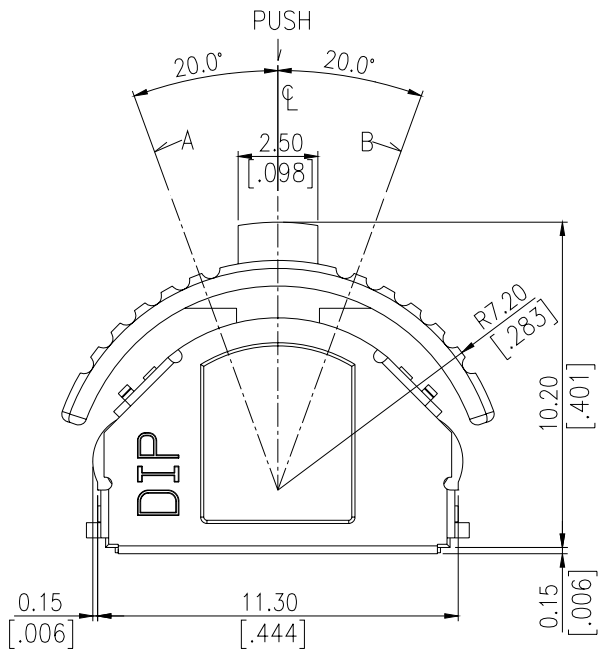
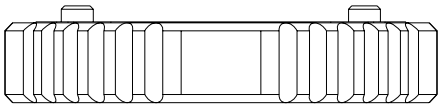
\* E : ERTHING TERMINAL  
\* █ : ON POSITION

CIRCUIT DIAGRAM



**General Tolerance : ±0.20mm**

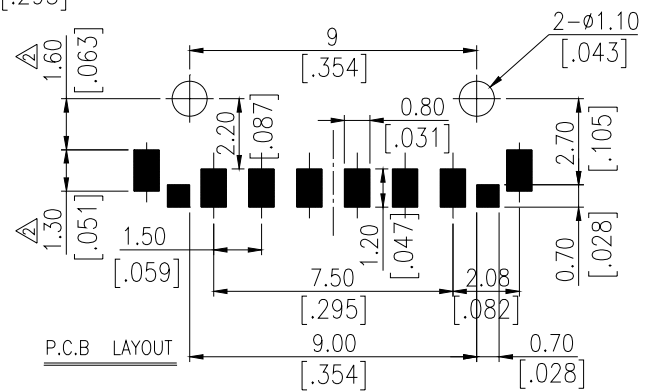
**PLJG□H**



ANGLE	A		B		ANGLE
	20°	(16°)	(8°)	(8°)	
①	█				
②	█				
③					█
④				█	█
C	█		█		█

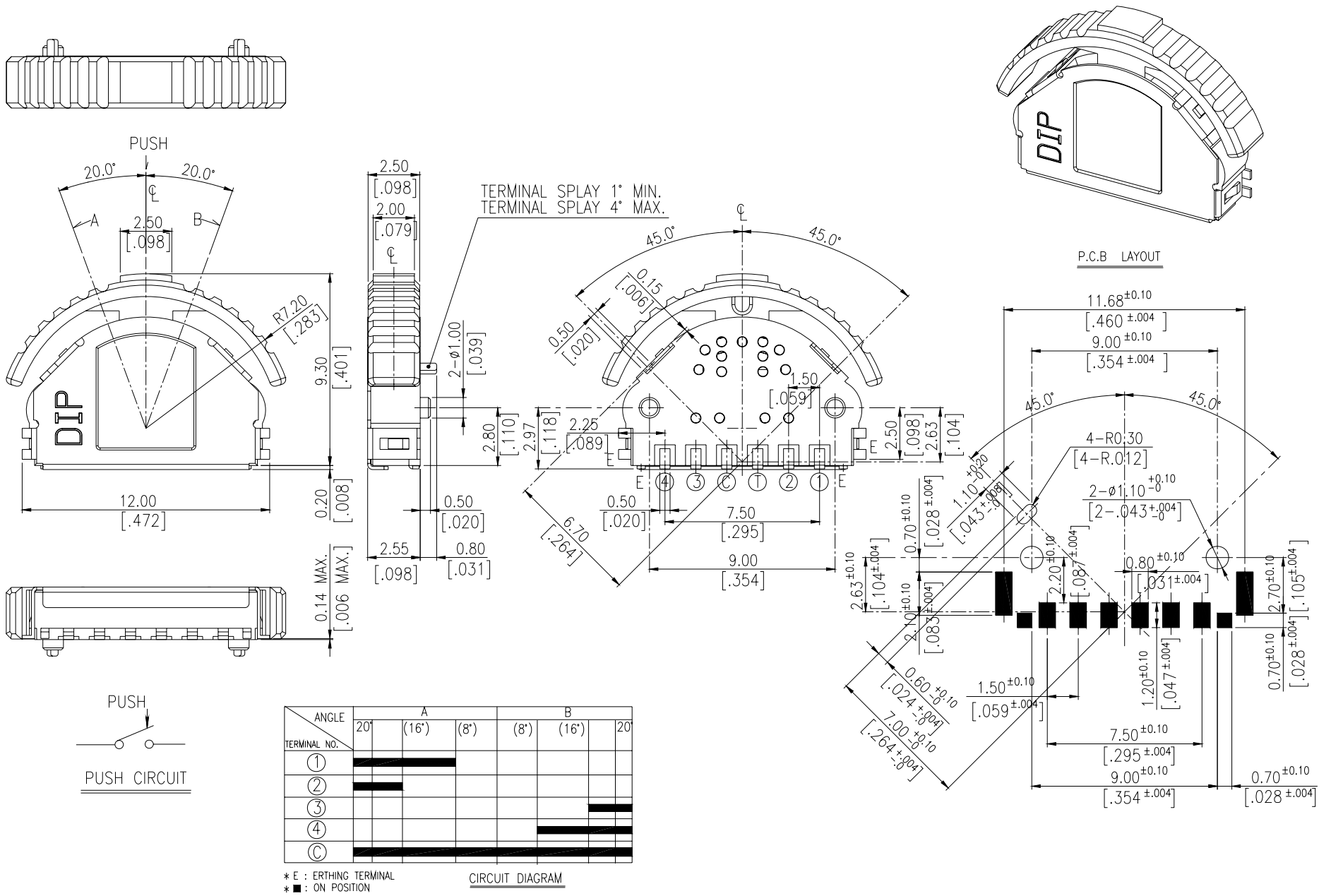
\* E : ERTHING TERMINAL  
\* █ : ON POSITION

CIRCUIT DIAGRAM



**General Tolerance : ±0.20mm**

# PLJG2



General Tolerance : ±0.20mm

## HOW TO ORDER

PL □ □ □ - □ □ - □ □

Package Style :

□ = Tape & Reel

Soldering :

V = Lead Free Solderable

H = High Actuator

□ = Standard

G = Gray

K = Black

□ = Two Ground Pins

1 = Four Ground Pins

2 = Alignment Pins

G = Ground Terminal

□ = Without Ground Terminals

Termination Type :

J = S.M.T J BEND Terminals

Push & Lever Switch

ANGLE	A		B			
	20°	(16°)	(8°)	(8°)	(16°)	20°
①	■					
②	■					
③						■
④					■	■
Ⓢ	■	■	■	■	■	■

\* E : ERTHING TERMINAL  
\* ■ : ON POSITION

CIRCUIT DIAGRAM

## SPECIFICATION

### △MECHANICAL

Mechanical Life: 100,000 operation cycles  
 Operation Force: (A) Force on return actuator  
 (A)  $40 \pm 20$ gf.  
 (B) Force on center push direction  
 (B)  $150 \pm 50$ gf.

Operation Temp:  $-10^{\circ}\text{C}$  to  $+70^{\circ}\text{C}$

Storage Temperature:  $-25^{\circ}\text{C}$  to  $+80^{\circ}\text{C}$

### △ELECTRICAL

Electrical Life: 100,000 operation cycles

Non-switching Rating: 100mA, 50VDC

Switching Rating: 10mA, 5VDC

Contact resistance: (a)  $100\text{m}\Omega$  max. at initial  
 (b)  $200\text{m}\Omega$  max. after life test

Insulation Resistance:  $100\text{M}\Omega$  min. 100VDC

Dielectric Strength: 100VAC/ minute

Capacitance : 5pF max.

Circuit: Single pole single throw.

## MATERIAL

△COVER: Stainless Steel

△BASE: UL94V-0 PPS Thermoplastic

Color: Brown

△STEM: UL94HB Nylon Thermoplastic

Color: Gray, Black

△CONTACT DISC: Phosphor bronze with silver cladding at contact surface

△TERMINAL: Phosphor bronze with silver cladding at contact surface

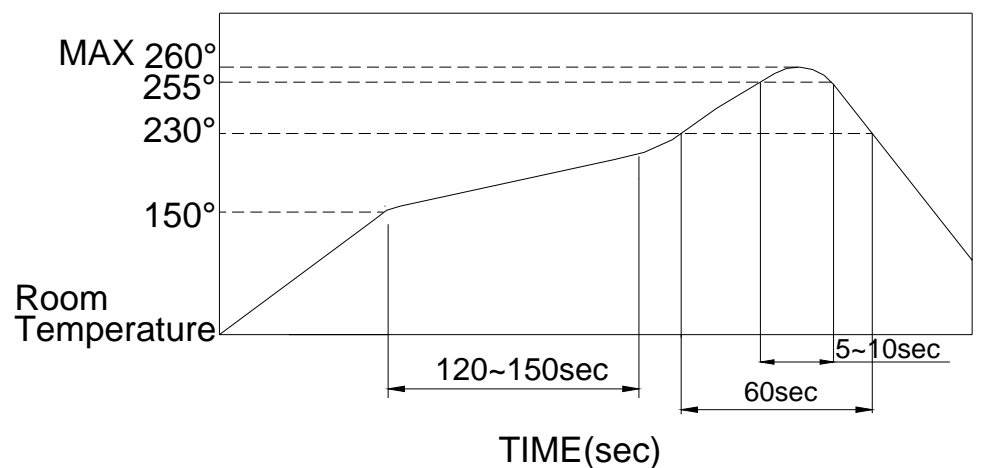
△SPRING: SWP or SUS

## SOLDERING PROCESSES

For best results, please follow these recommendations: △ Temperature Profile:

△HAND SOLDERING : Use a soldering iron of 30 watts,  
 Controlled at  $350^{\circ}\text{C}$  approximately 5 seconds while  
 Applying solder.

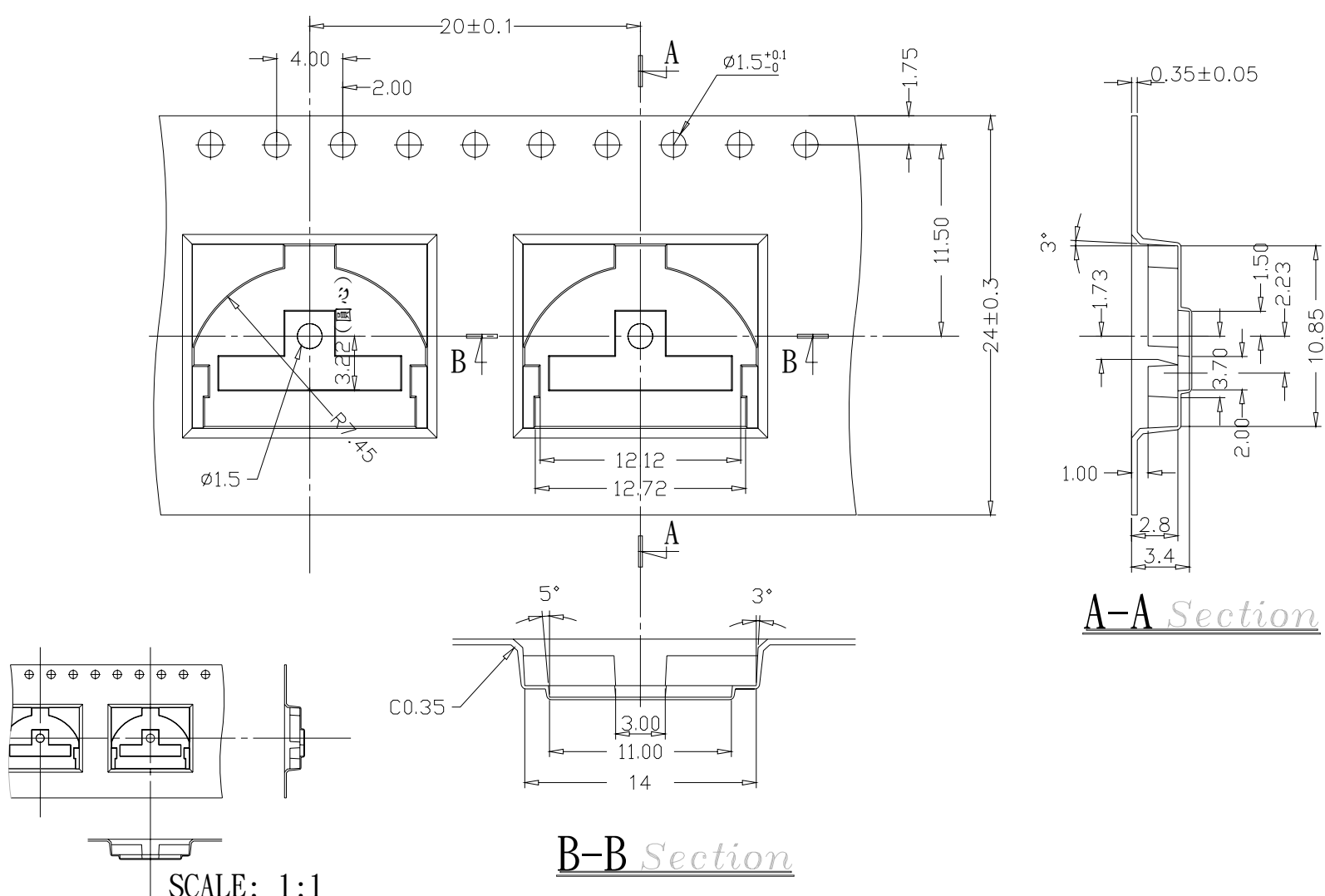
△REFLOW SOLDERING: When applying reflow  
 soldering the peak temperature of the reflow oven  
 should be set to  $260^{\circ}\text{C}$  max.



## PACKING

Part Number	Number Per Tube	Number Per Reel
PLJ(G) · 1	-	1000
PLJG2	-	900

## PLJ-□H REEL



General Tolerance :  $\pm 0.1\text{mm}$

