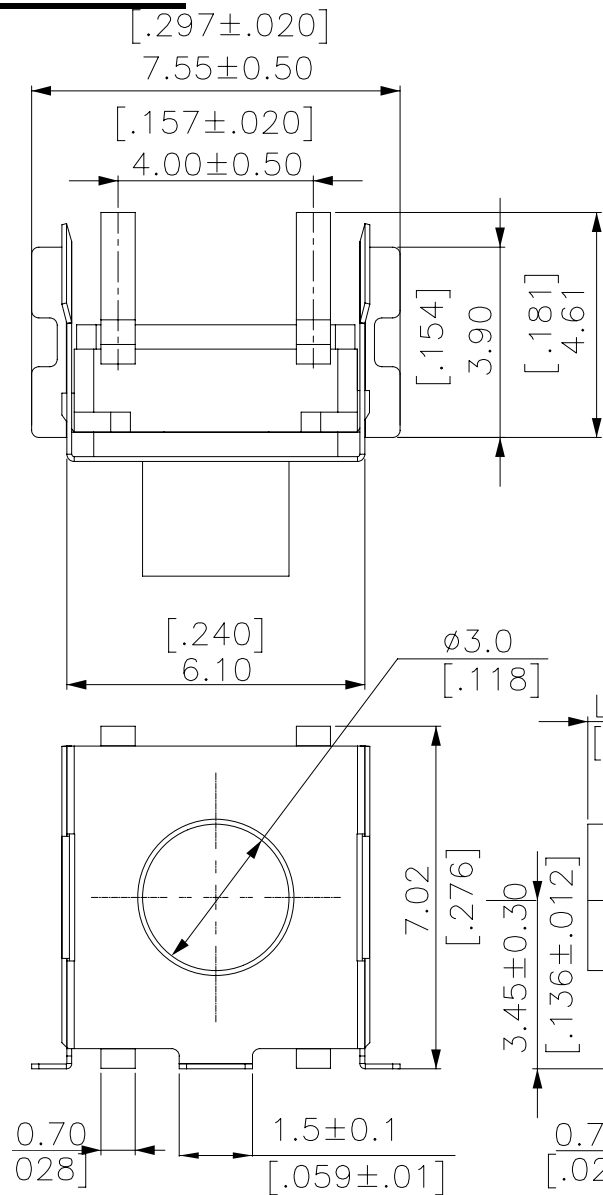


TA(S)-6 SERIES

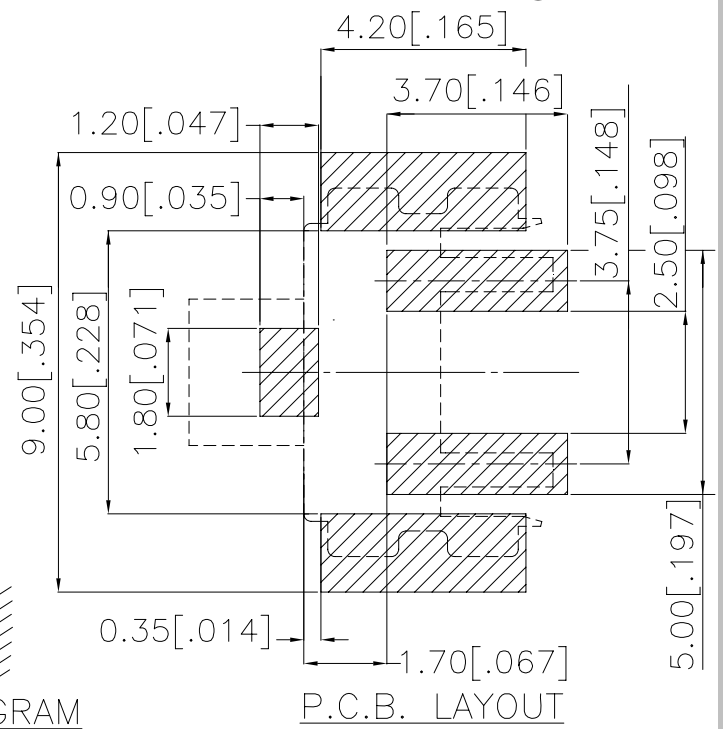
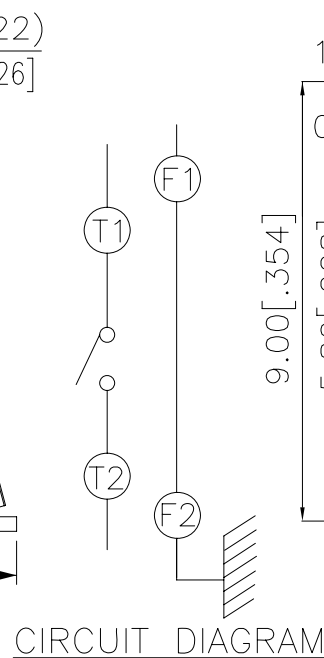
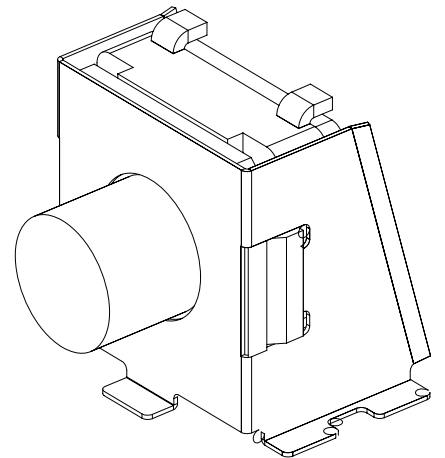


DIMENSIONS

TAS-6

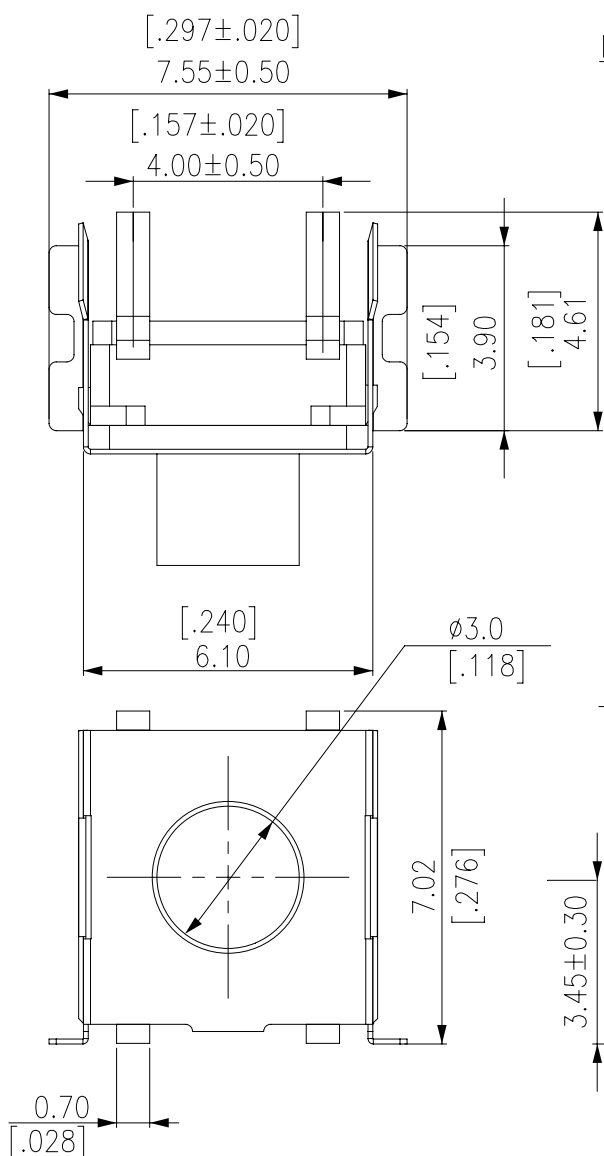


PROD. NO.	L(mm)	L(inch)
TA(S)-600-V	0.00	0.0000
TA(S)-608-V	0.80	0.0314
TA(S)-610-V	1.00	0.0393
TA(S)-623-V	2.35	0.0925
TA(S)-633-V	3.30	0.1299



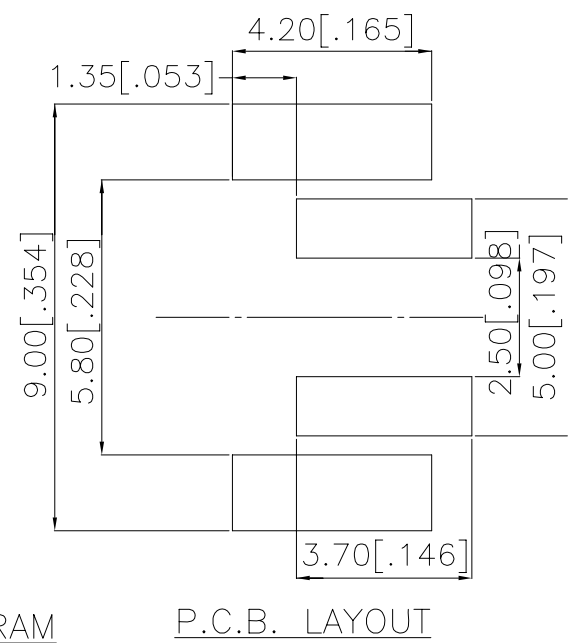
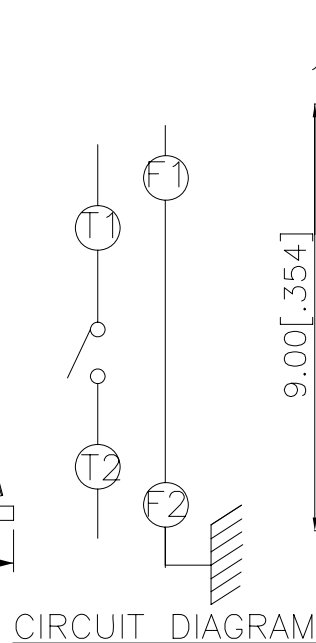
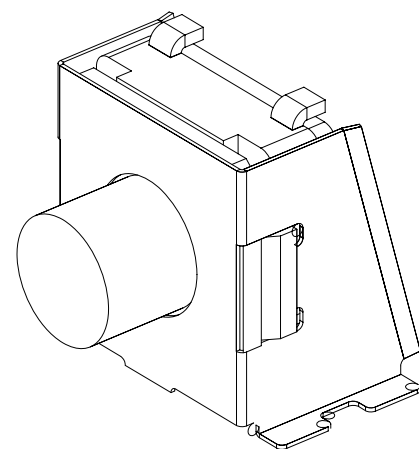
General Tolerance : ± 0.2 mm

TA-6



NOTE:

PROD. NO.	L(mm)	L(inch)
TA-600	0.00	0.0000
TA-608	0.80	0.0314
TA-610	1.00	0.0393
TA-623	2.35	0.0925
TA-633	3.30	0.1300



HOW TO ORDER

TA - 6 - -

Package Style:
T/R=Tape & Reel
 = Bulk Pack

Soldering:
V = Lead Free Solderable

Operating Force :
N = Brown, 180gf
R = Red, 260gf

Stem Height :
00 = 0 mm
08 = 0.8 mm
10 = 1.0 mm
23 = 2.35 mm
33 = 3.30mm

Prod. Series :
S = With Support Terminal
 = Without Support Terminal

SPECIFICATION

△MECHANICAL

*Operation Force: 260 ± 70gf (RED), 180 ± 50gf (Brown)

*Stop Strength: Max. 3kgf vertical static load continuously for 15 seconds.

*Stroke: 0.45 ± 0.2mm

*Operation Temperature: -25°C to +70°C

*Storage Temperature: -30°C to +80°C

△ELECTRICAL

Electrical Life: 500,000 cycles min. for 260gf, 180gf

Rating: 50mA , 12VDC

Contact Resistance: 100mΩ max.

Insulation Resistance: 100MΩ min. at 500VDC

Dielectric Strength: 250VAC/1 minute

Contact Arrangement: 1 pole 1 throw

MATERIAL

△COVER: Nickel silver.

△STEM: Silicone rubber (Red / Brown)

△TERMINAL: Brass with silver plated.

Color: Black

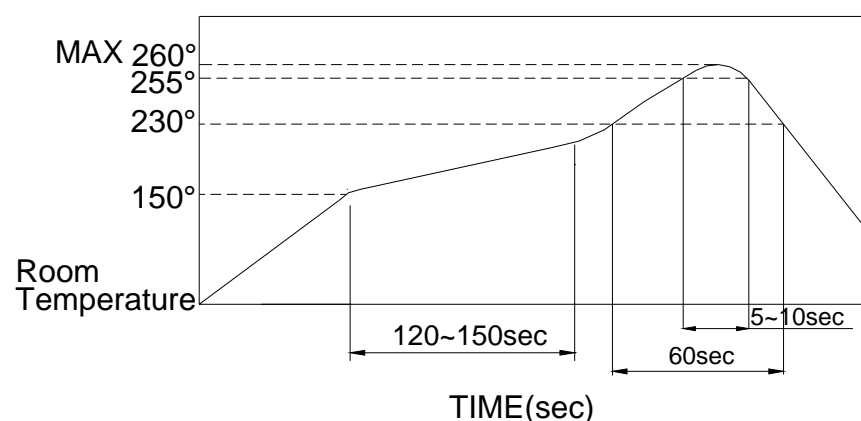
△CONTACT: Phosphor bronze with silver cladding

SOLDERING PROCESS

△HAND SOLDERING: Use a soldering iron of 30 watts, controlled at 350°C approximately max 5 seconds.

△SOLDERING: Vapor phase & reflow soldering can be applied.

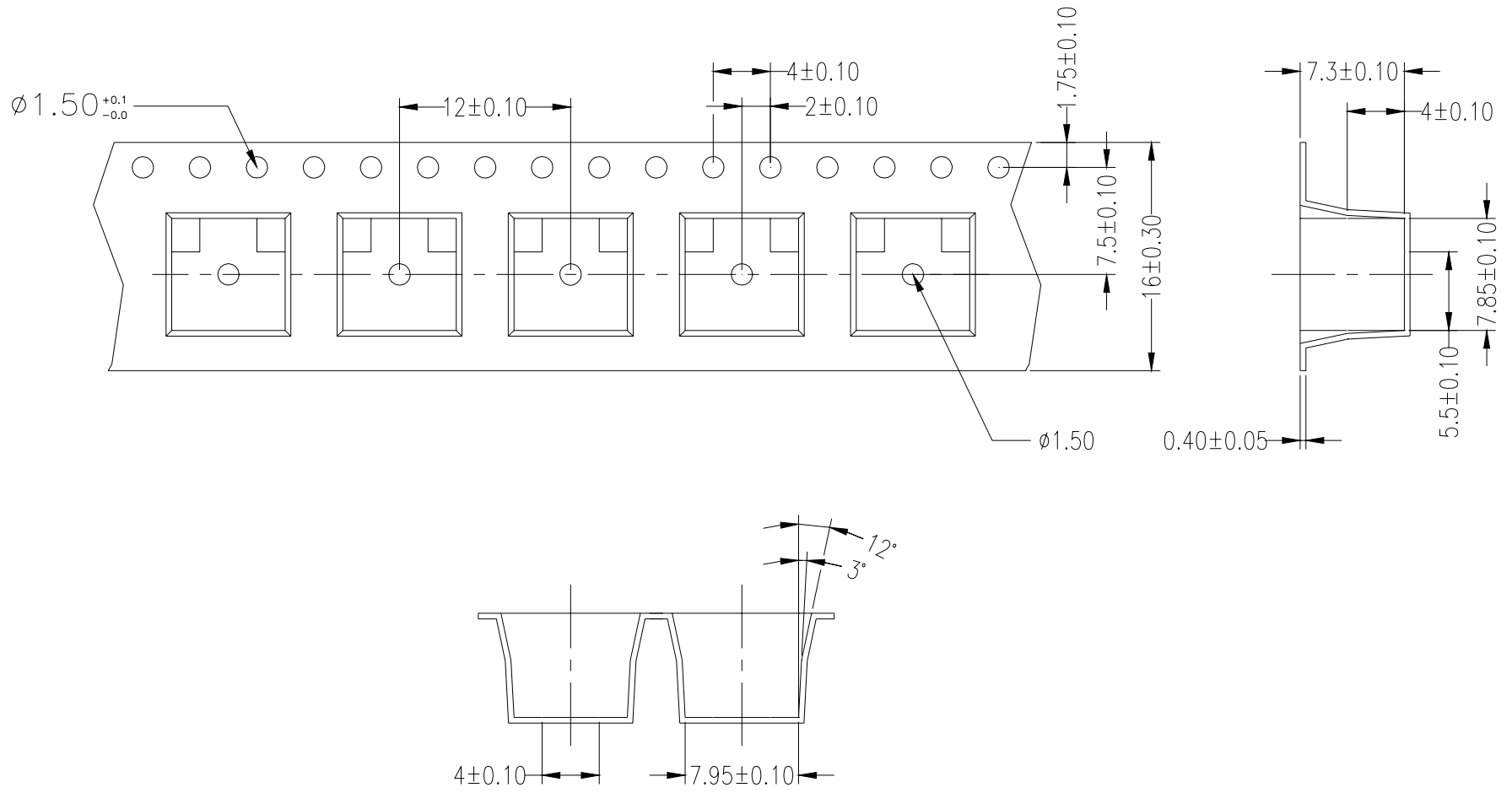
△Reflow Temperature Profile:



PACKING

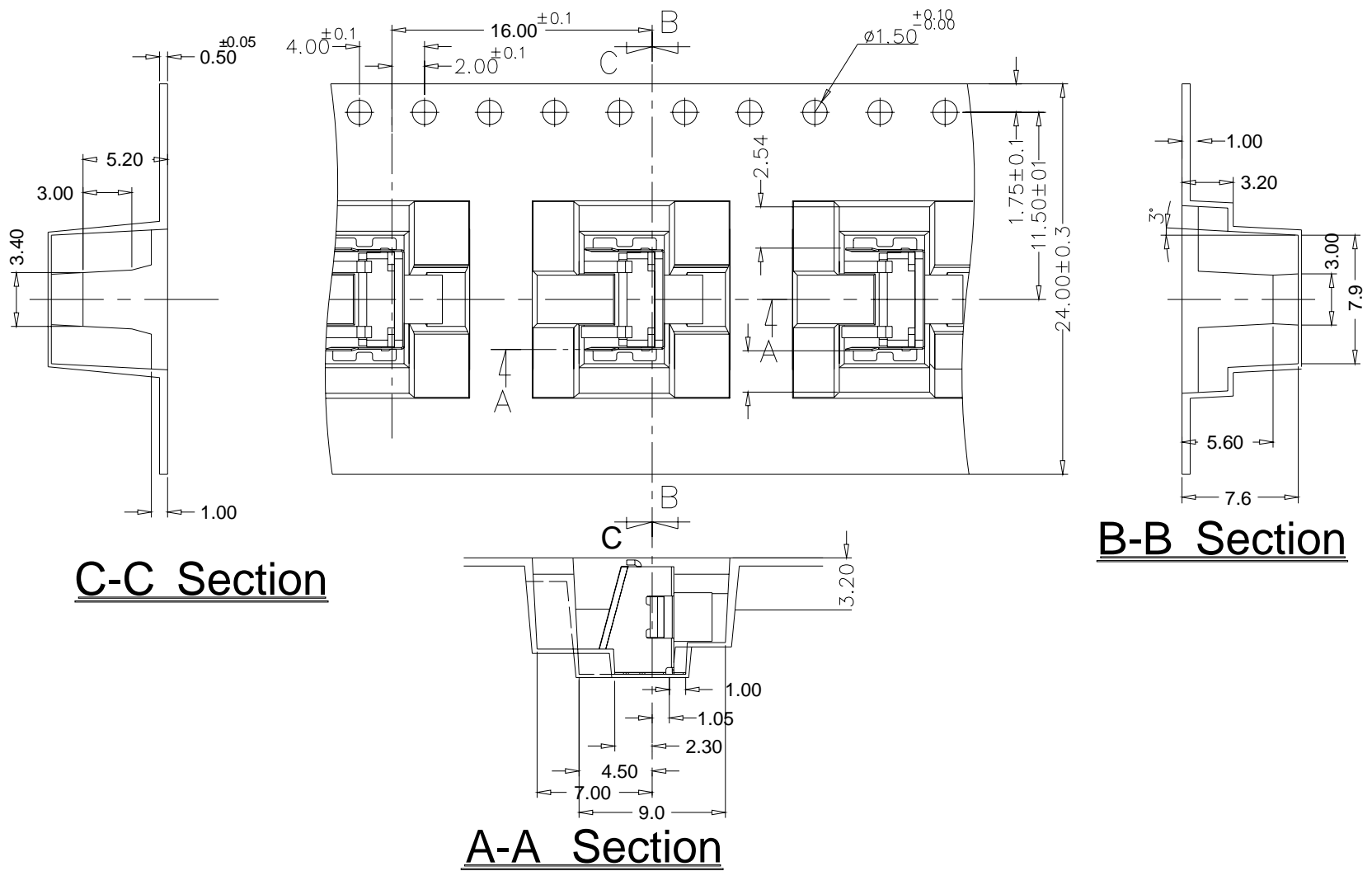
Part Number	Number Per Reel	Number Per Bag
TA(S)-600	700	500
TA(S)-608	700	500
TA(S)-610	700	500
TA(S)-623	700	500
TA(S)-633	600	500

TA(S)-600~623 REEL



General Tolerance : ± 0.1 mm

TA(S)-633 REEL



C-C Section

A-A Section

B-B Section

General Tolerance : ± 0.1 mm