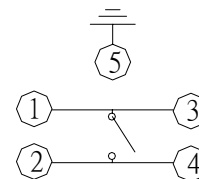
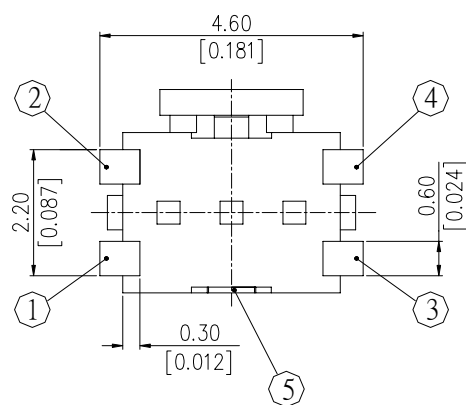
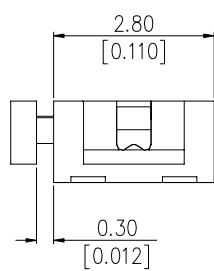
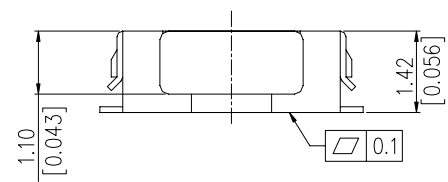
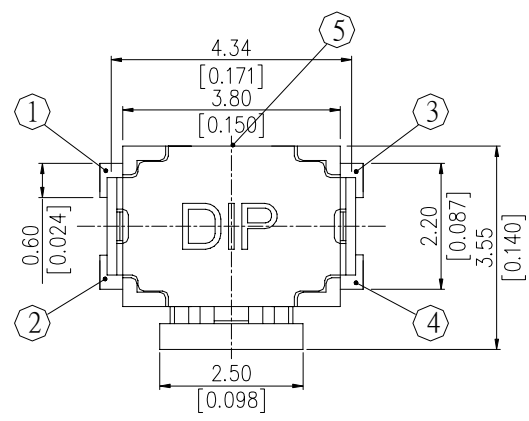


# IPTG □ SERIES

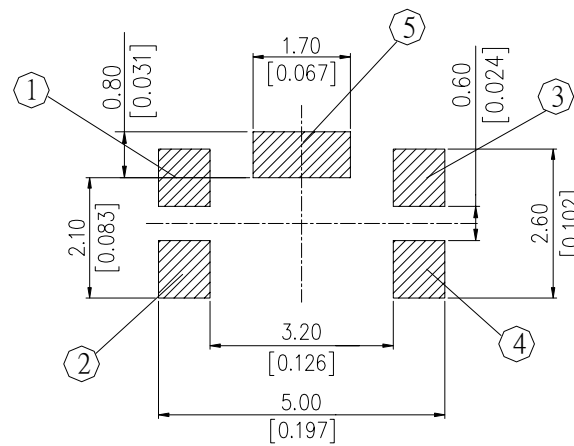


## DIMENSIONS

### IPTG1



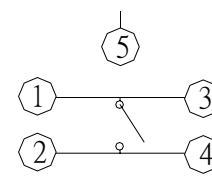
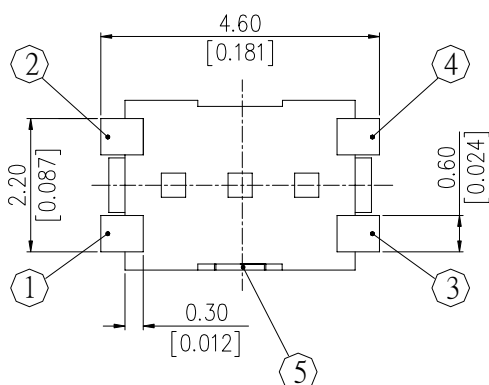
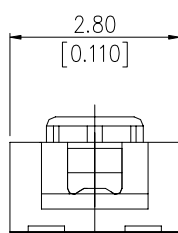
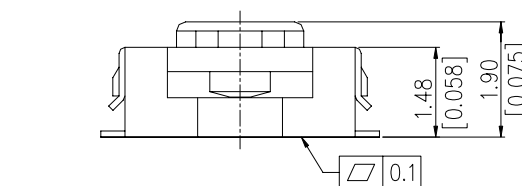
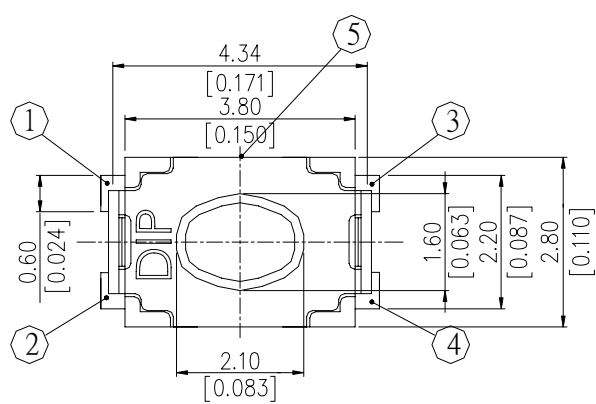
CIRCUIT DIAGRAM



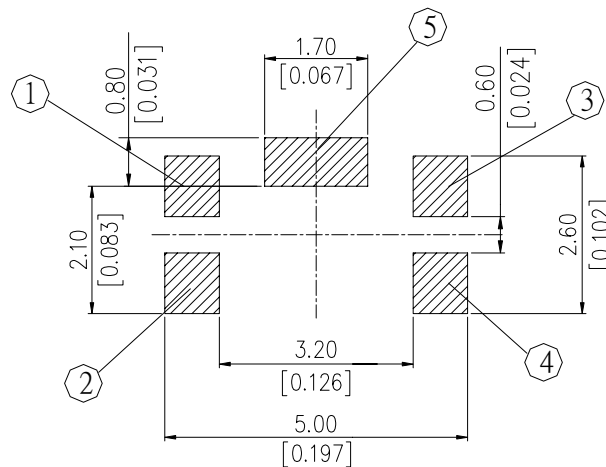
P.C.B. LAYOUT

General Tolerance :  $\pm 0.2\text{mm}$

### IPTG □



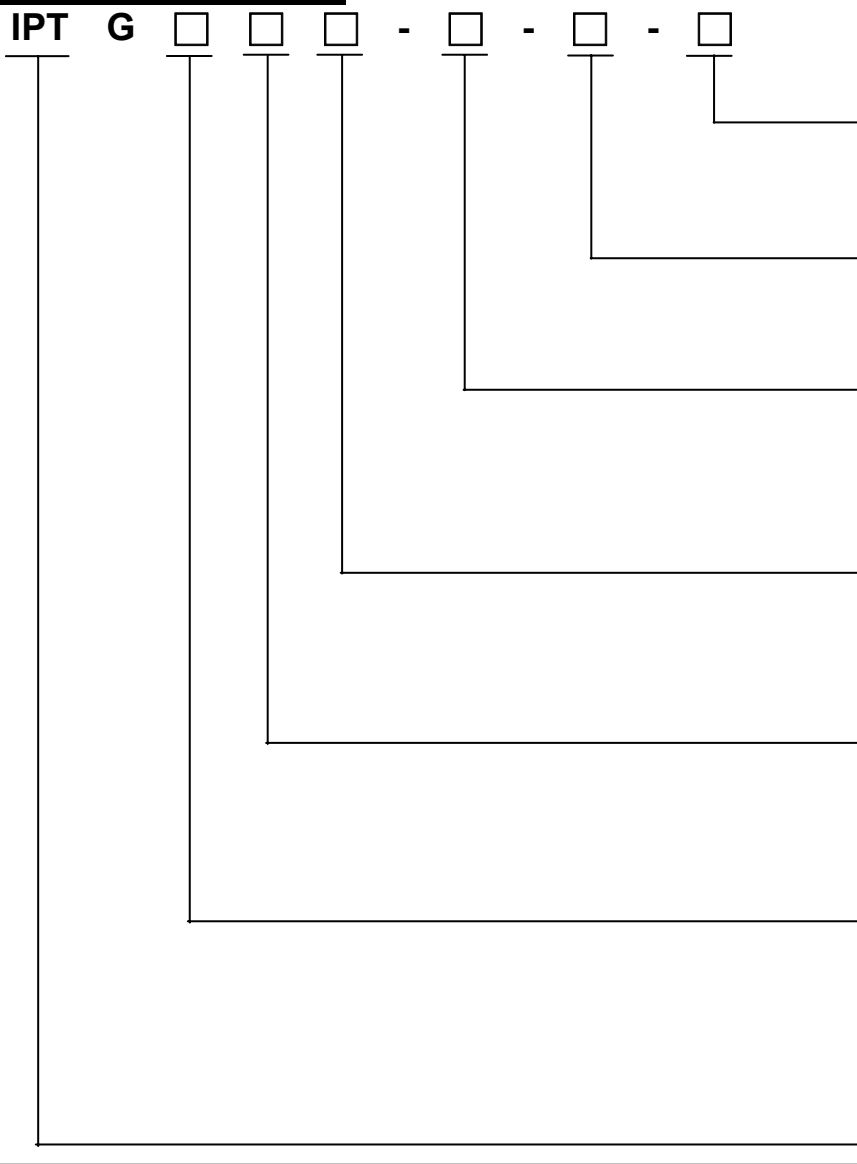
CIRCUIT DIAGRAM



P.C.B. LAYOUT

General Tolerance :  $\pm 0.2\text{mm}$

## HOW TO ORDER



Package Style :  
T/R=Type & Reel

Soldering :  
V=Lead Free

Contact Material  
□=Silver  
A =Gold

Actuator Color :  
K=Black  
W=White

Operating Force :  
3=160gf(only for vertical push)  
4=200gf(only for side push)

Height for Vertical Push:  
1=Side Push  
2=Vertical Push H : 1.90mm  
3=Vertical Push H : 2.50mm(to be available)

Tiny Slide/Vertical Slide

## SPECIFICATION

### △MECHANICAL

Operation Force: 160 ± 50gf Vertical Push  
220 +80/-70gf Side push  
Stroke: 0.25 +0.2 / - 0.1 mm

Operation Temperature: -30°C~80°C  
Storage Temperature: -40°C~85°C

### △ELECTRICAL

Electrical Life: 100,000 cycles

Rating:50mA , 12VDC  
Contact Resistance: 100mΩ max.  
Insulation Resistance: 100MΩ min. at 100VDC  
Dielectric Strength: 100VAC/1 minute

## MATERIAL

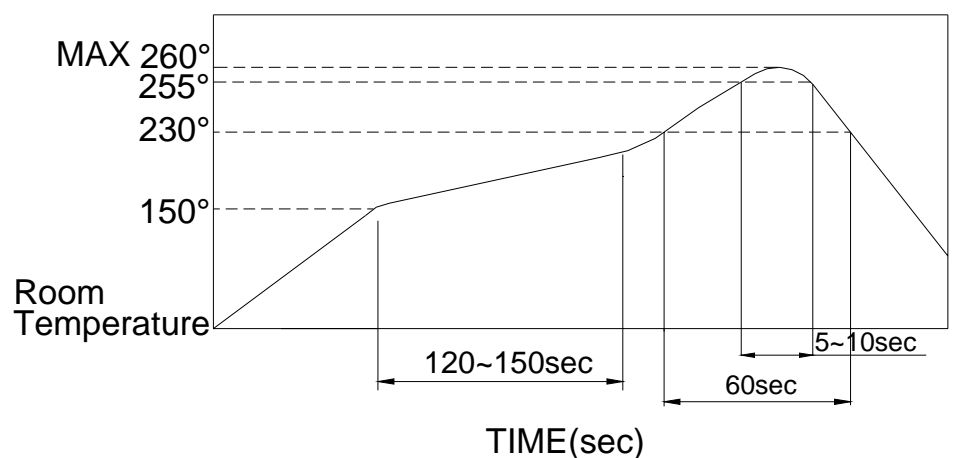
- △COVER: Stainless steel with silver plating
- △SPACING COVER : Stainless steel
- △STEM: LCP High-temp thermoplastic  
Color: Black
- △TAPE : Teflon
- △CONTACT : Stainless steel with silver plating
- △BASE : LCP High-temp thermoplastic  
Color: Black
- △TERMINAL : ①Brass, with silver plating  
②Brass, gold plated

## SOLDERING PROCESS

△HAND SOLDERING : Use a soldering iron of 30 watts, controlled at 350°C approximately max 5 seconds while applying.

△REFLOW SOLDERING: When applying reflow soldering, the peak temperature or the reflow oven should be set to 260°C max.

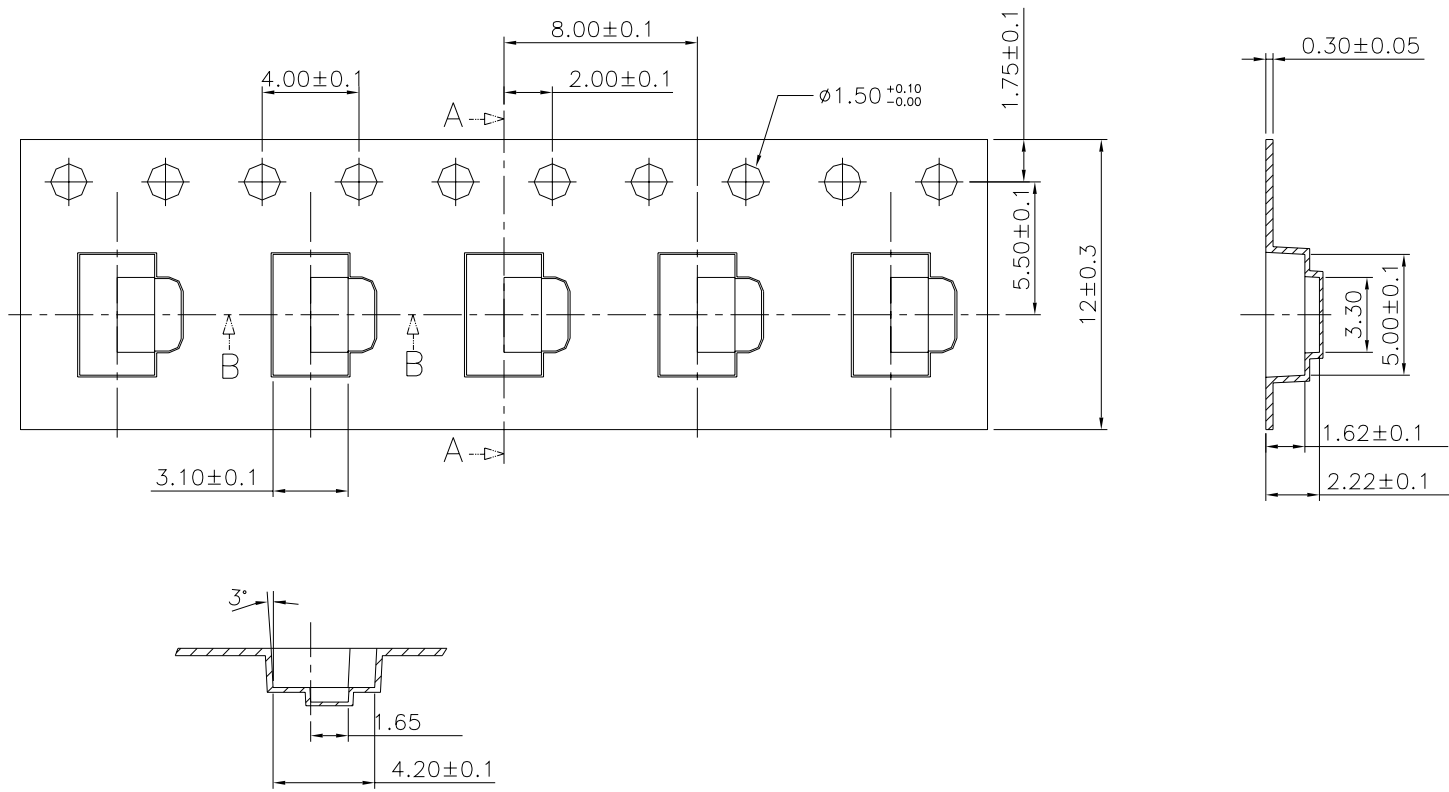
### △Reflow Temperature Profile:



# PACKING

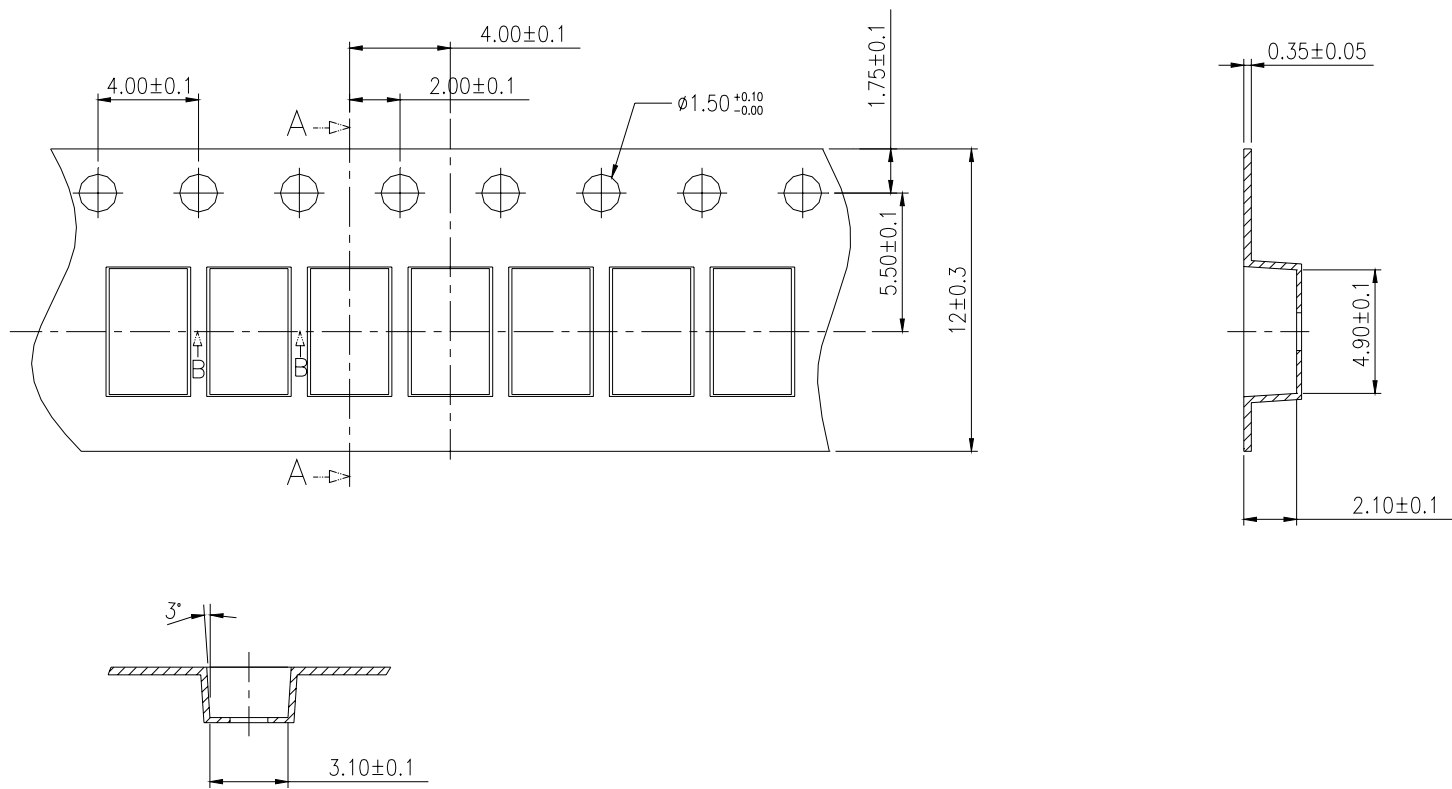
Part Number	Number Per Reel	
<b>IPTG1</b>	<b>3500</b>	
<b>IPTG2</b>	<b>8100</b>	

## IPTG1 REEL



General Tolerance :  $\pm 0.1$ mm

## IPTG2 REEL



General Tolerance :  $\pm 0.1$ mm