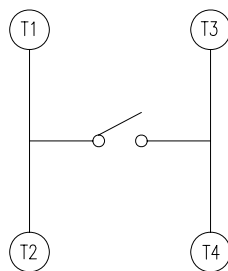
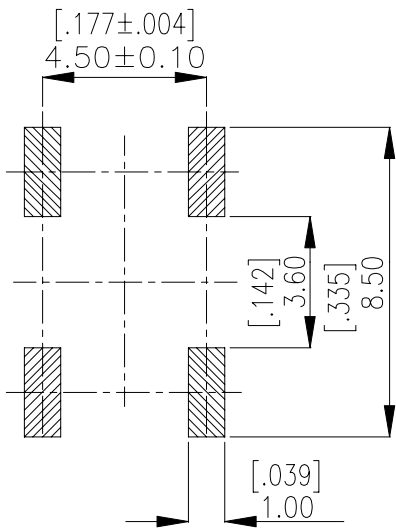
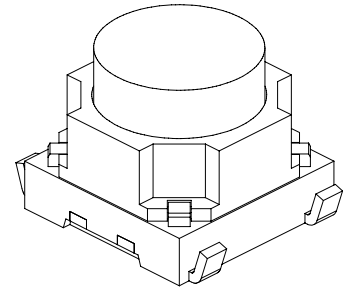
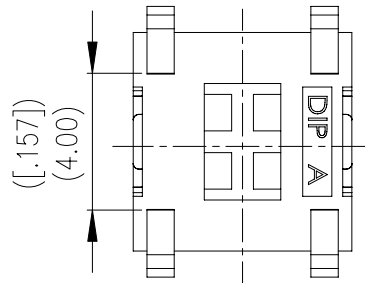
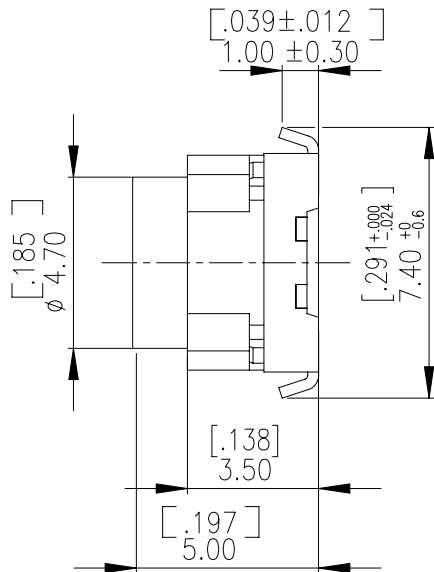
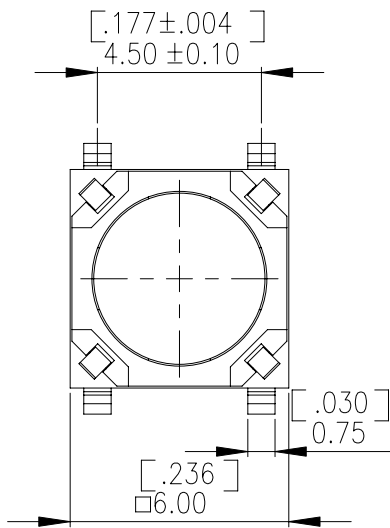


LTL-6 SERIES



DIMENSIONS

LTL-6



NOTE:
 1. ALL DIMENSIONS ARE IN MILLIMETER, BRACKETED DIMENSIONS ARE IN INCHES.
 2. GENERAL TOLERANCES ± 0.20 mm.

P.C.B. LAYOUT

CIRCUIT DIAGRAM

HOW TO ORDER

LTL-6 13 □ V-T/R

- Package Style :
T/R= Tape & Reel
- Soldering :
V=Lead Free Solderable
- Color of Stem for Operating Force :
R= 200gf
S=350gf
- Travel:
13= 1.3mm
- Prod. Size:
6 X 6 mm
- Terminal Type :
L= With L S.M.T terminal
- Long travel Tact Switch

SPECIFICATION

△MECHANICAL

Mechanical Life: 30,000 operations.
 Operation Force: 200±50gf RED(R)
 Operation Temperature: -40°C to +85°C
 Storage Temperature: -40°C to +85°C
 Stroke: 1.30+0.10/-0.30mm

△ELECTRICAL

Electrical Life: 30,000 cycles.
 Rating: 50 mA 12 V DC.
 Contact Resistance: 100mΩ max. at 500VDC
 Insulation Resistance: 100MΩ min. at 500VDC
 Dielectric Strength: 300V AC/1 minute.
 Contact Arrangement: 1pole 1throw

MATERIAL

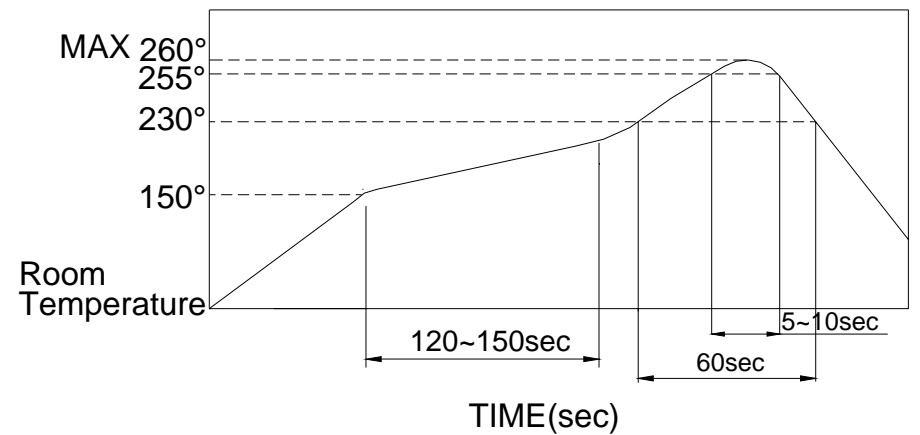
- △COVER : NYLON UL 94V-0 High-Temp Thermoplastic
Color: Black.
- △Silicone Dome : Silicone rubber with metal contact
With Gold Plating
- △STEM : NYLON UL 94V-0 High-Temp Thermoplastic
Color: Red.
- △BASE : NYLON UL 94V-0 High-Temp Thermoplastic
Color: Black.
- △TERMINAL : Brass , With Silver Plating

SOLDERING PROCESSES

△HAND SOLDERING : Use a soldering iron of 30 watts, controlled at 350°C approximately max 5 seconds while applying.

△REFLOW SOLDERING: When applying reflow soldering, the peak temperature or the reflow Oven should be set at 260°C max.

△Reflow Temperature Profile:



PACKING

Part Number	Number Per Tube	Number Per Reel
	-	900

