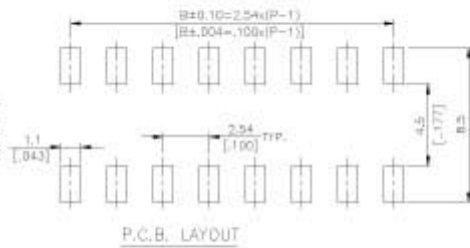
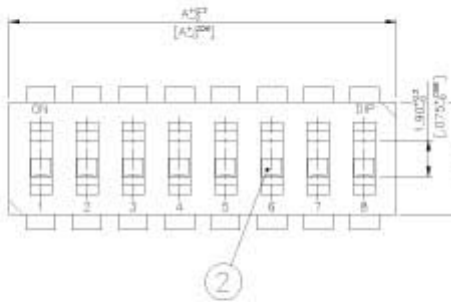


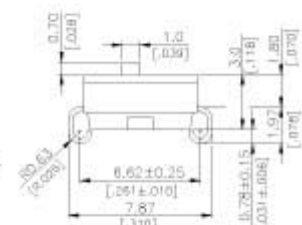
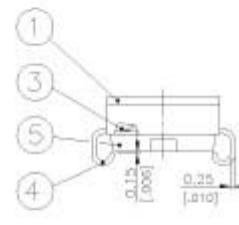
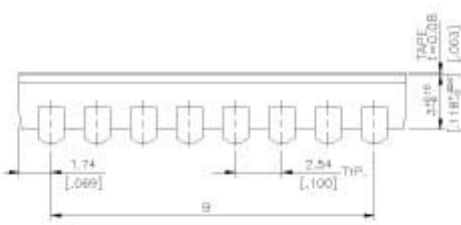
DL(R)&DJ(R) SERIES



DJ(R)



DJ -12	12	31.42[1.237]	27.94[1.100]
DJ -10	10	26.34[1.037]	22.86[.900]
DJ -09	9	23.80[.937]	20.32[.800]
DJ -08	8	21.26[.837]	17.78[.700]
DJ -07	7	18.72[.737]	15.24[.600]
DJ -06	6	16.18[.637]	12.70[.500]
DJ -05	5	13.64[.537]	10.16[.400]
DJ -04	4	11.10[.437]	7.62[.300]
DJ -03	3	8.56[.337]	5.08[.200]
DJ -02	2	6.02[.237]	2.54[.100]

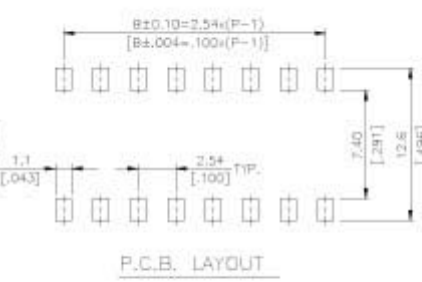
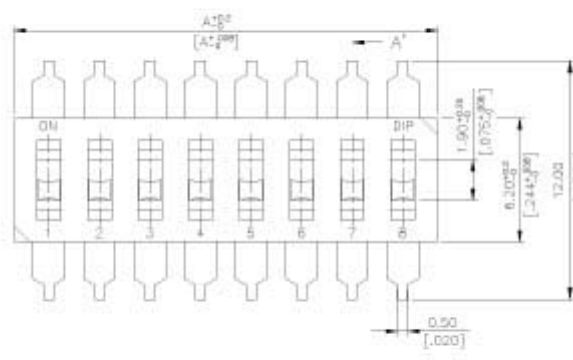


DJR SERIES

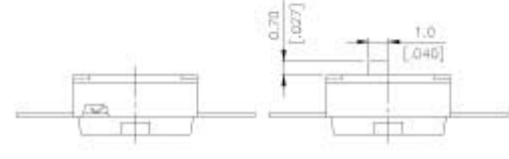
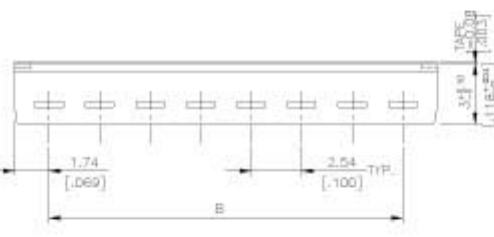
DJ SERIES

General Tolerance : ±0.2mm

DL(R)



DL -12(A)(P)	12	31.42[1.237]	27.94[1.100]
DL -10(A)(P)	10	26.34[1.037]	22.86[.900]
DL -09(A)(P)	9	23.80[.937]	20.32[.800]
DL -08(A)(P)	8	21.26[.837]	17.78[.700]
DL -07(A)(P)	7	18.72[.737]	15.24[.600]
DL -06(A)(P)	6	16.18[.637]	12.70[.500]
DL -05(A)(P)	5	13.64[.537]	10.16[.400]
DL -04(A)(P)	4	11.10[.437]	7.62[.300]
DL -03(A)(P)	3	8.56[.337]	5.08[.200]
DL -02(A)(P)	2	6.02[.237]	2.54[.100]
DL -01(A)(P)	2	3.48[.137]	



DLR SERIES

DL SERIES

General Tolerance : ±0.2mm

HOW TO ORDER

□ □ □ □ - □ - □ - □ - □

Package Style:

B = Tube Except DL(R)

T/R= Tape & Reel

□=Bulk pack

Soldering:

V = Lead Free Solderable

Seal:

□ = Regular

T = Top Tape Sealed <Recessed Actuator Only>

Number Of Positions:

01 = 1 Position Except DJ(R)-01

02 = 2 Position

03 = 3 Position

04 = 4 Position

05 = 5 Position

06 = 6 Position

07 = 7 Position

08 = 8 Position

09 = 9 Position

10 = 10 Position

12 = 12 Position

Actuator Type:

□ = Raised Actuator

R = Recessed Actuator

DJ = J Bend Terminal S.M.T

DL = Flat Terminal S.M.T

SPECIFICATION

△MECHANICAL

Mechanical Life: 2,000 operations per switch.

Operation Force: 1,000gf max.

Stroke: 1.0 mm

Operation Temp: -20°C to +85°C

Storage Temperature: -40°C to +85°C

△ELECTRICAL

Electrical Life: 2,000 operations min. per switch 24VDC,
25mA

Non-switching Rating: 100mA, 50VDC

Switching Rating: 25mA, 24VDC

Contact resistance: (a) 50mΩ max. at initial
(b) 100mΩ max. after life test

Insulation Resistance: 100MΩ min. 500VDC

Dielectric Strength: 500VAC/ minute

Capacitance: 5pF max.

Circuit: Single pole single throw.

MATERIAL

△BASE & COVER: UL94V-0 PPS High-Temp.

Thermoplastic, Color: Black

△ACTUATOR: UL94V-0 Nylon High-Temp Thermoplastic

(V-option only for DL(R) · DJ(R))

Color: White

△CONTACT: Alloy Copper with gold plated

△TERMINAL: Brass with gold plated

▲CONTACT PLATING: Gold plated over nickel.

▲TERMINAL PLATING: Gold plated

△TAPE : KAPTON

SOLDERING PROCESSES

For best results, please follow these recommendation:

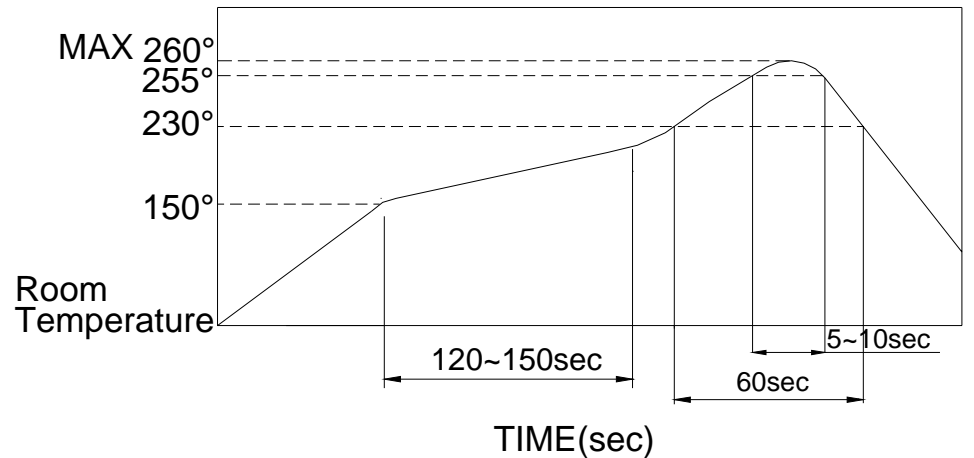
△ **WAVE SOLDERING:** Recommended solder temperature at 500°F(260°C) max. of 5 seconds for through hole type.

△ **HAND SOLDERING :** Use a soldering iron of 30 watts, controlled at 350°C approximately 5 seconds.

△ **REFLOW SOLDERING:** When applying reflow soldering, the peak temperature or the reflow Oven should be set at 260°C max.

△ Any flux enters the switch may fail the conductivity.

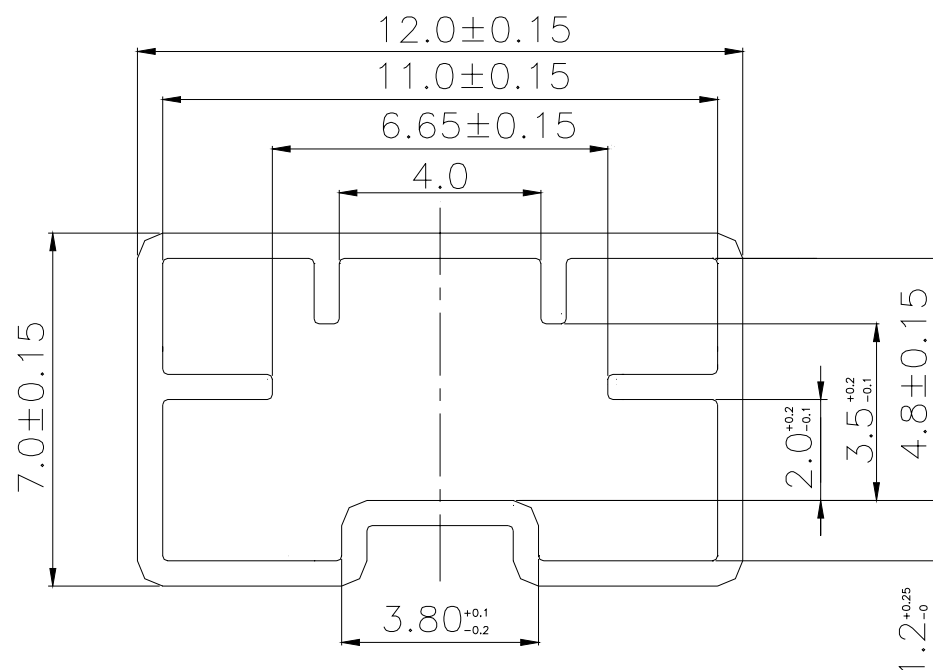
△ Do not clean the switch body except top tape sealed type, which only suitable for spray cleaning method from top of the s/w.



Part Number	Number Per Tube	Part Number	Number Per Reel	Part Number	Number Per Bulk pack	Part Number	Number Per Reel
DJ(R)-02	76	DJ(R)-02	1000	DL(R)-01	500	-	-
DJ(R)-03	55	DJ(R)-03	1000	DL(R)-02	500	-	-
DJ(R)-04	42	DJ(R)-04	1000	DL(R)-03	500	-	-
DJ(R)-05	35	-	-	DL(R)-04	500	DL(R)-04	1000
DJ(R)-06	28	-	-	DL(R)-05	500	-	-
DJ(R)-07	25	-	-	DL(R)-06	500	DL(R)-06	1000
DJ(R)-08	22	DJ(R)-08	1000	DL(R)-07	500	-	-
DJ(R)-09	20	DJ(R)-09	1000	DL(R)-08	500	-	-
DJ(R)-10	18	DJ(R)-10	1000	DL(R)-09	500	-	-
DJ(R)-12	15	-	-	DL(R)-10	500	-	-
				DL(R)-12	500	-	-

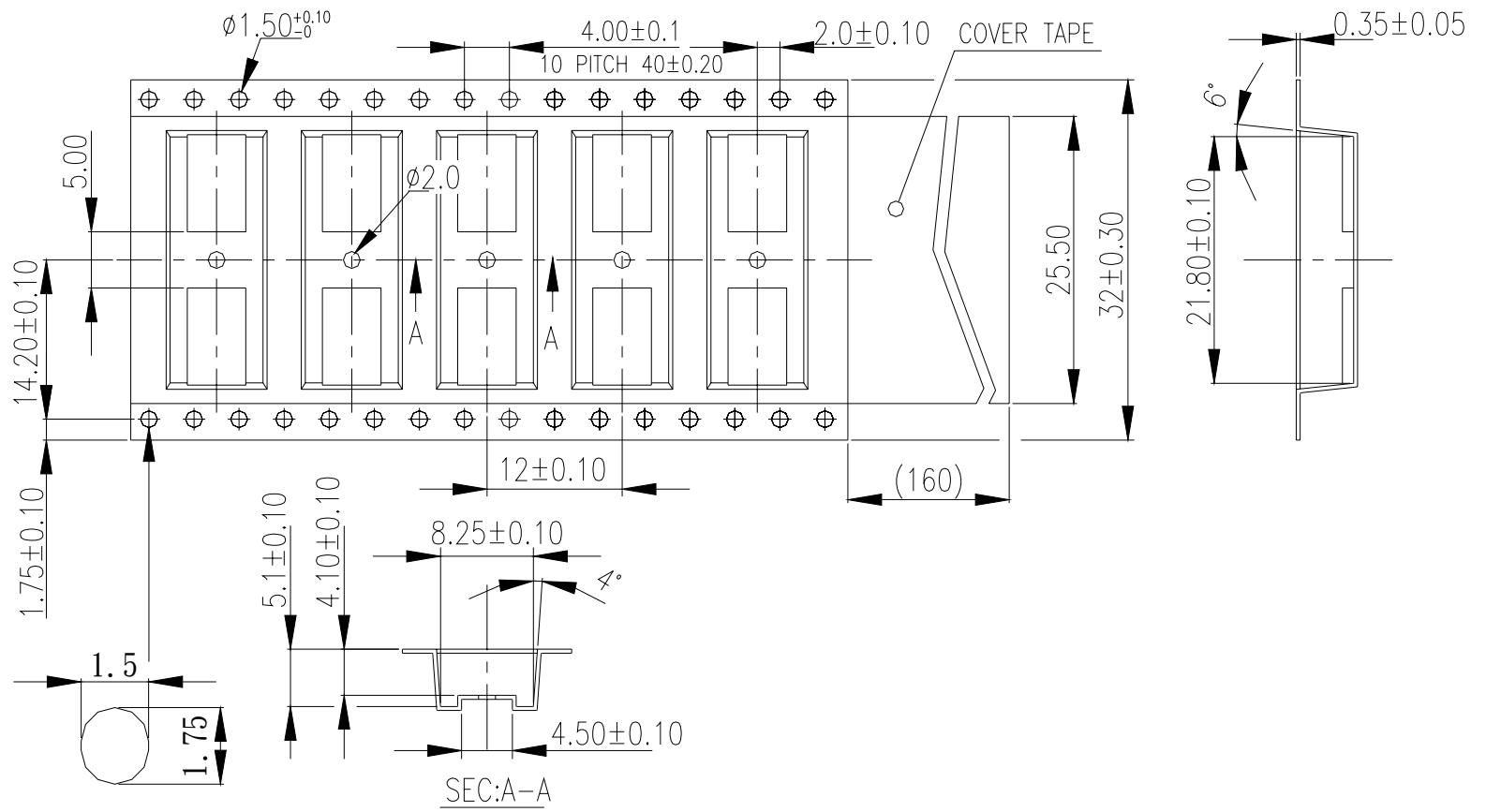
PACKING

DJ(R) TUBE



General Tolerance : ±0.2mm

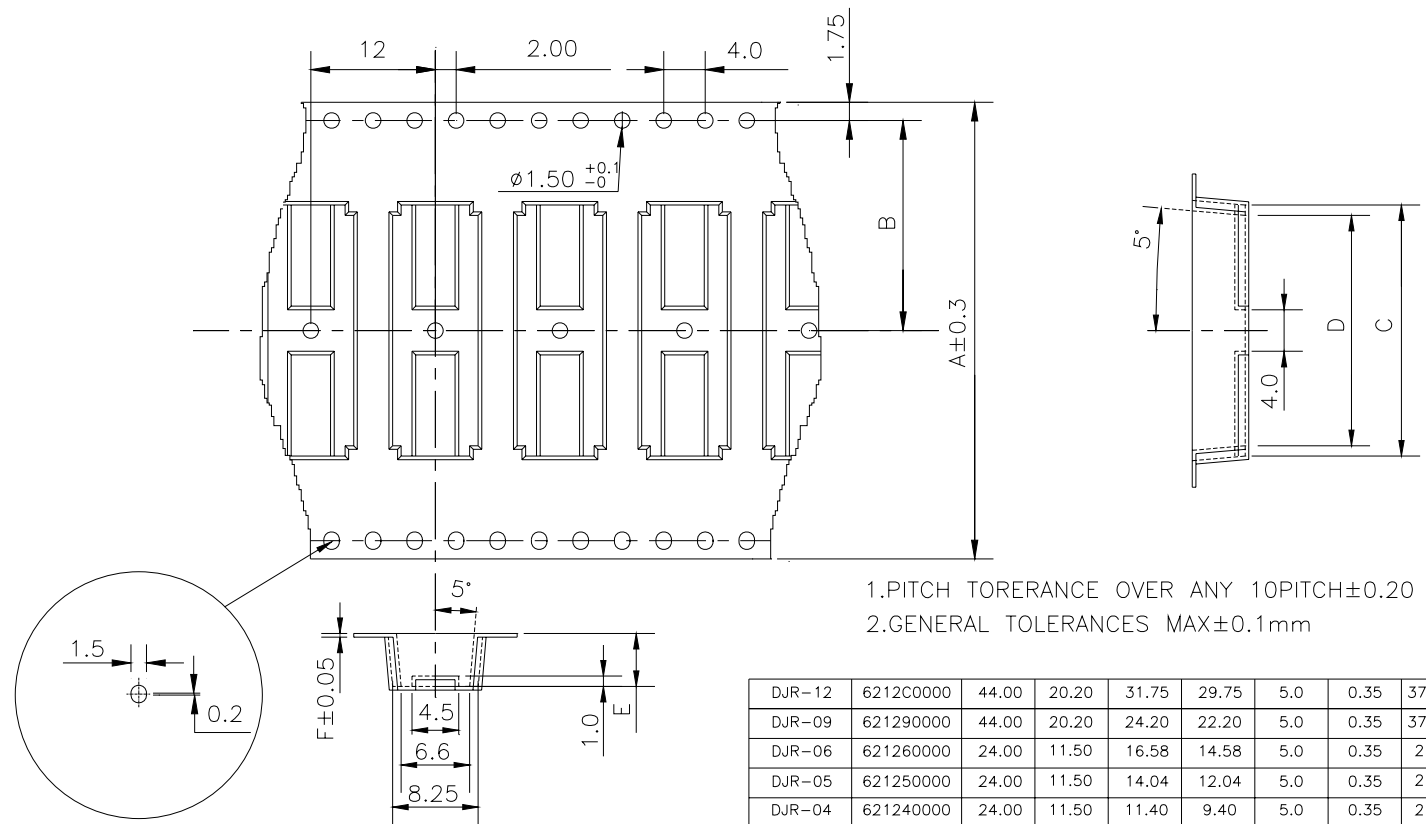
DJR-08 REEL



SCALE 1: 4

General Tolerance : ±0.1mm

DJR-02、03、04、09



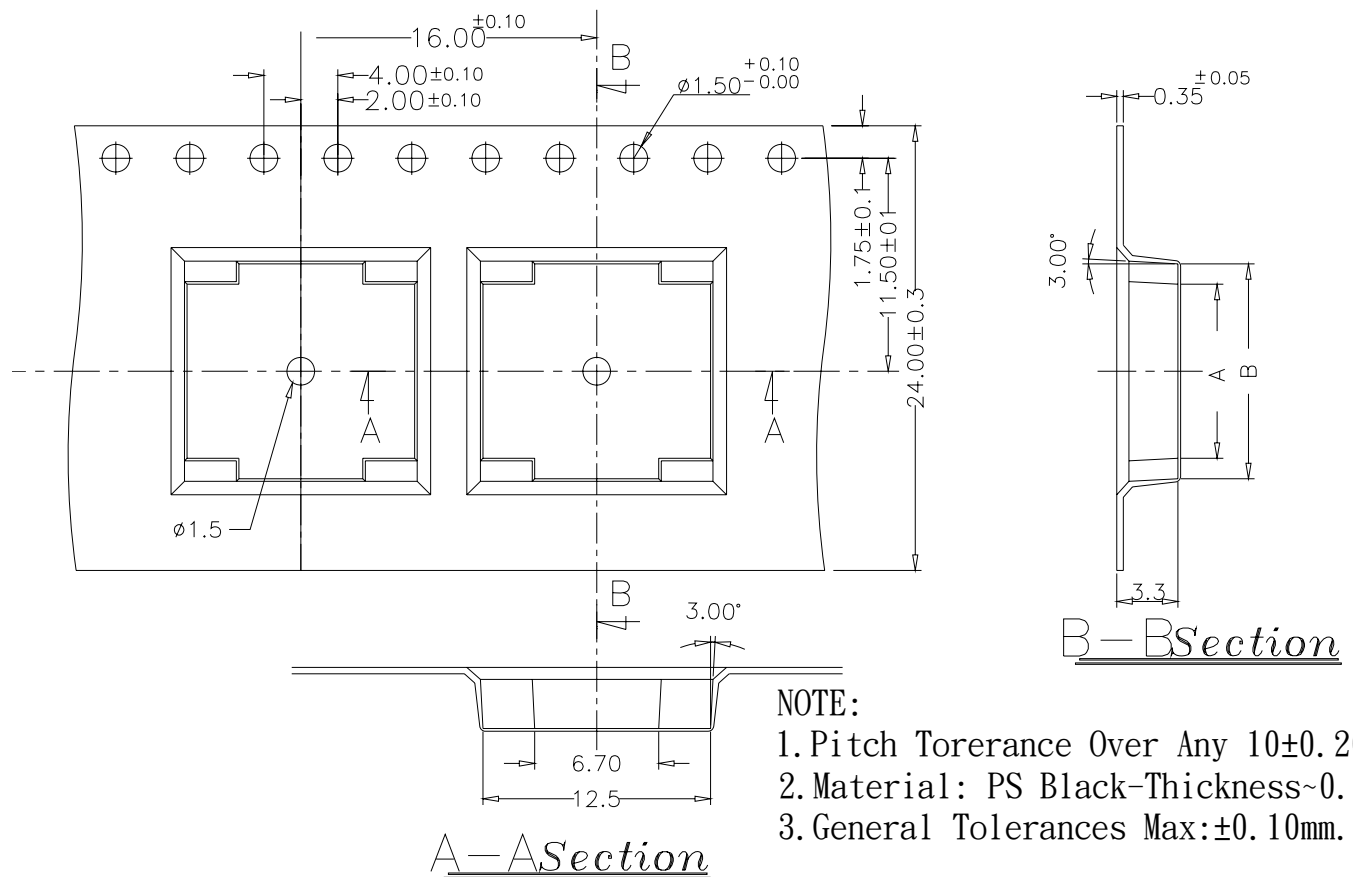
1.PITCH TORERANCE OVER ANY 10PITCH±0.20
2.GENERAL TOLERANCES MAX±0.1mm

PART NAME	PART NO	DIM A	DIM B	DIM C	DIM D	DIM E	DIM F	COVER
DJR-12	6212C0000	44.00	20.20	31.75	29.75	5.0	0.35	37.5mm
DJR-09	621290000	44.00	20.20	24.20	22.20	5.0	0.35	37.5mm
DJR-06	621260000	24.00	11.50	16.58	14.58	5.0	0.35	21mm
DJR-05	621250000	24.00	11.50	14.04	12.04	5.0	0.35	21mm
DJR-04	621240000	24.00	11.50	11.40	9.40	5.0	0.35	21mm
DJR-03	621230000	16.00	7.50	9.00	7.00	4.5	0.35	13.3mm

W:44(雙排孔)

General Tolerance : ±0.1mm

DLR-02、04



NOTE:
1.Pitch Torerance Over Any 10±0.20mm.
2.Material: PS Black-Thickness~0.35±0.05.
3.General Tolerances Max:±0.10mm.

DL(R)-06	623060000	14.5	16.7
DL(R)-04	623040000	9.40	11.6
PART NO:		A	B