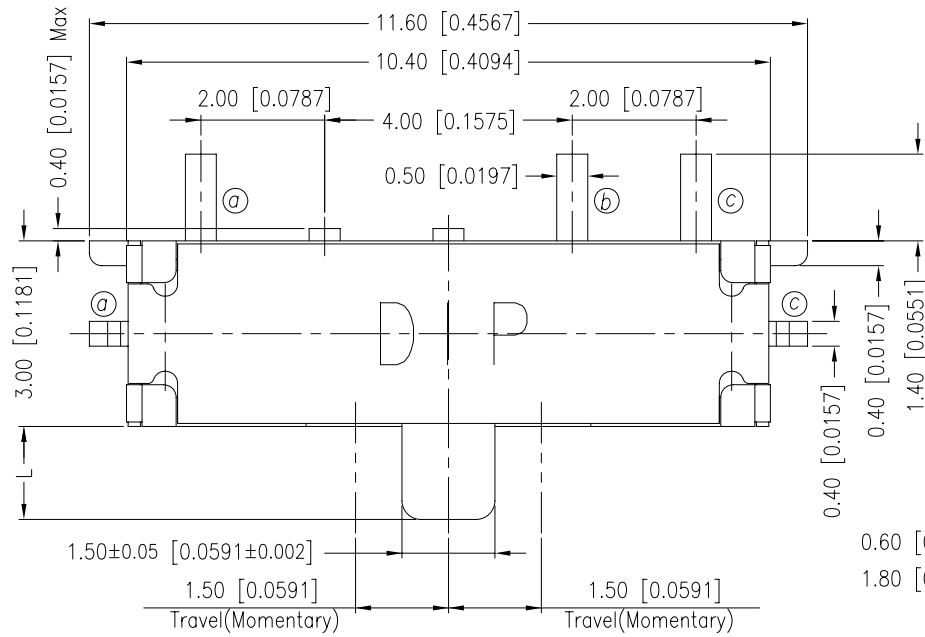


S2S SERIES

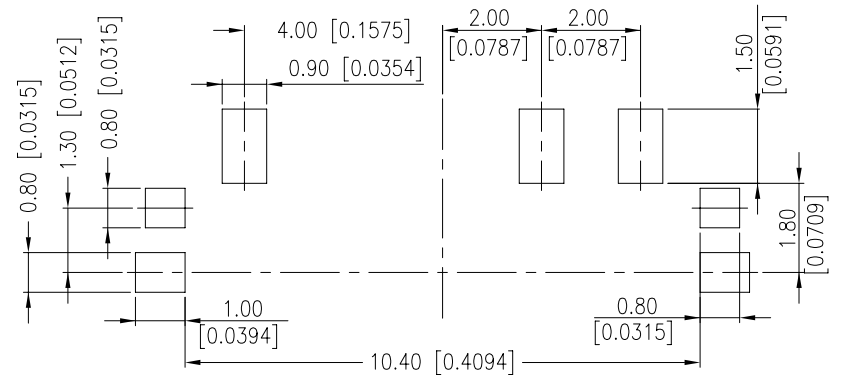
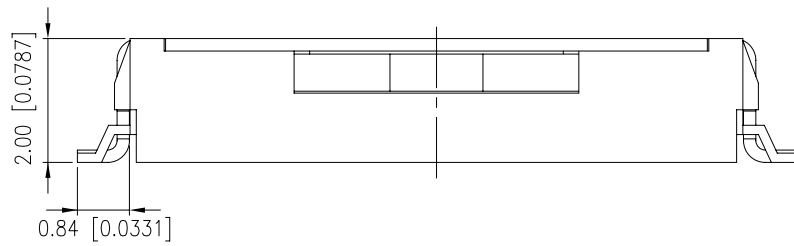
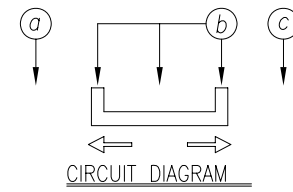


DIMENSION

S2S-AF



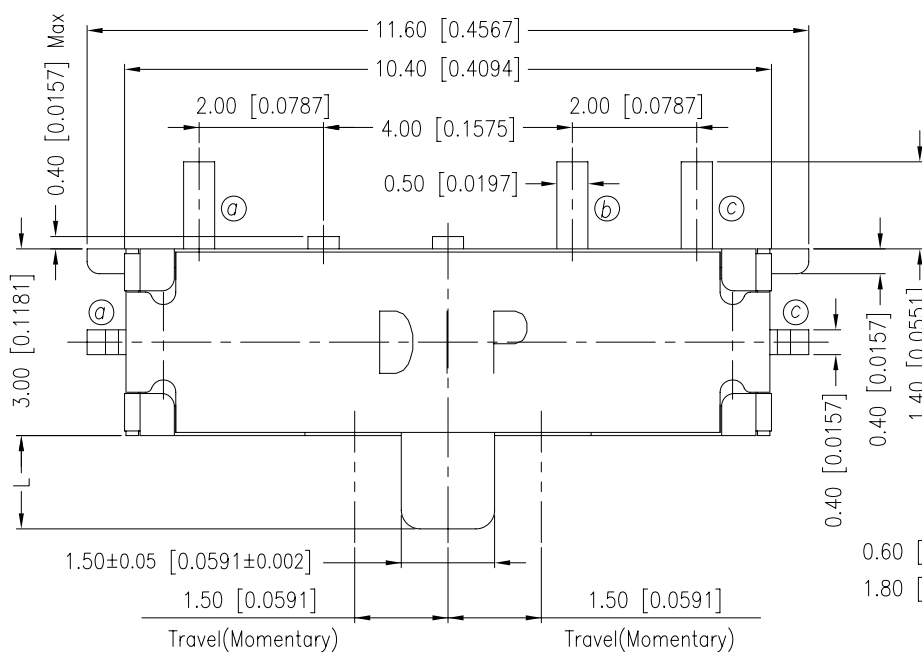
PART NO	L
S2S-A15F	1.50 [0.0591]
S2S-A25F	2.50 [0.0984]



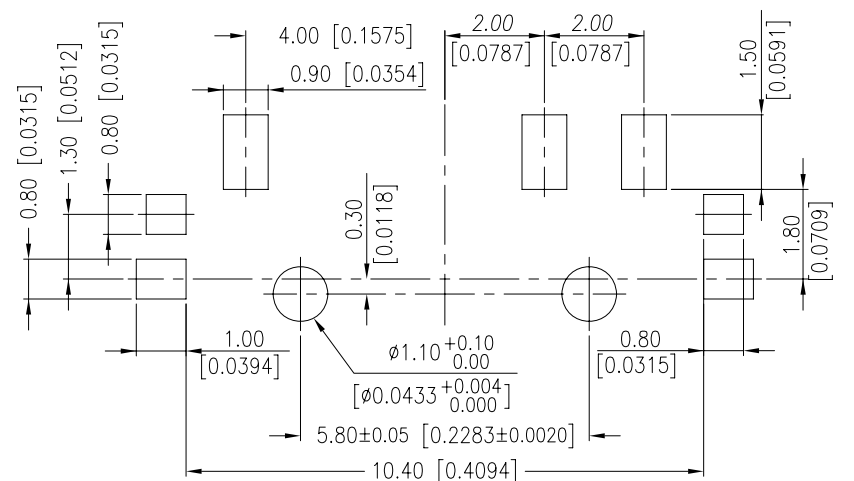
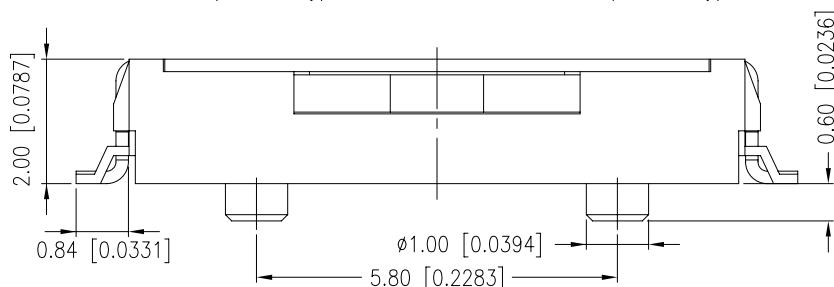
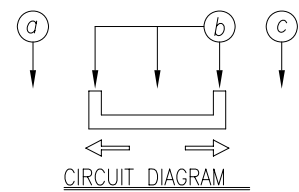
P.C.B. LAYOUT

General Tolerance : ±0.2mm

S2S-AFC



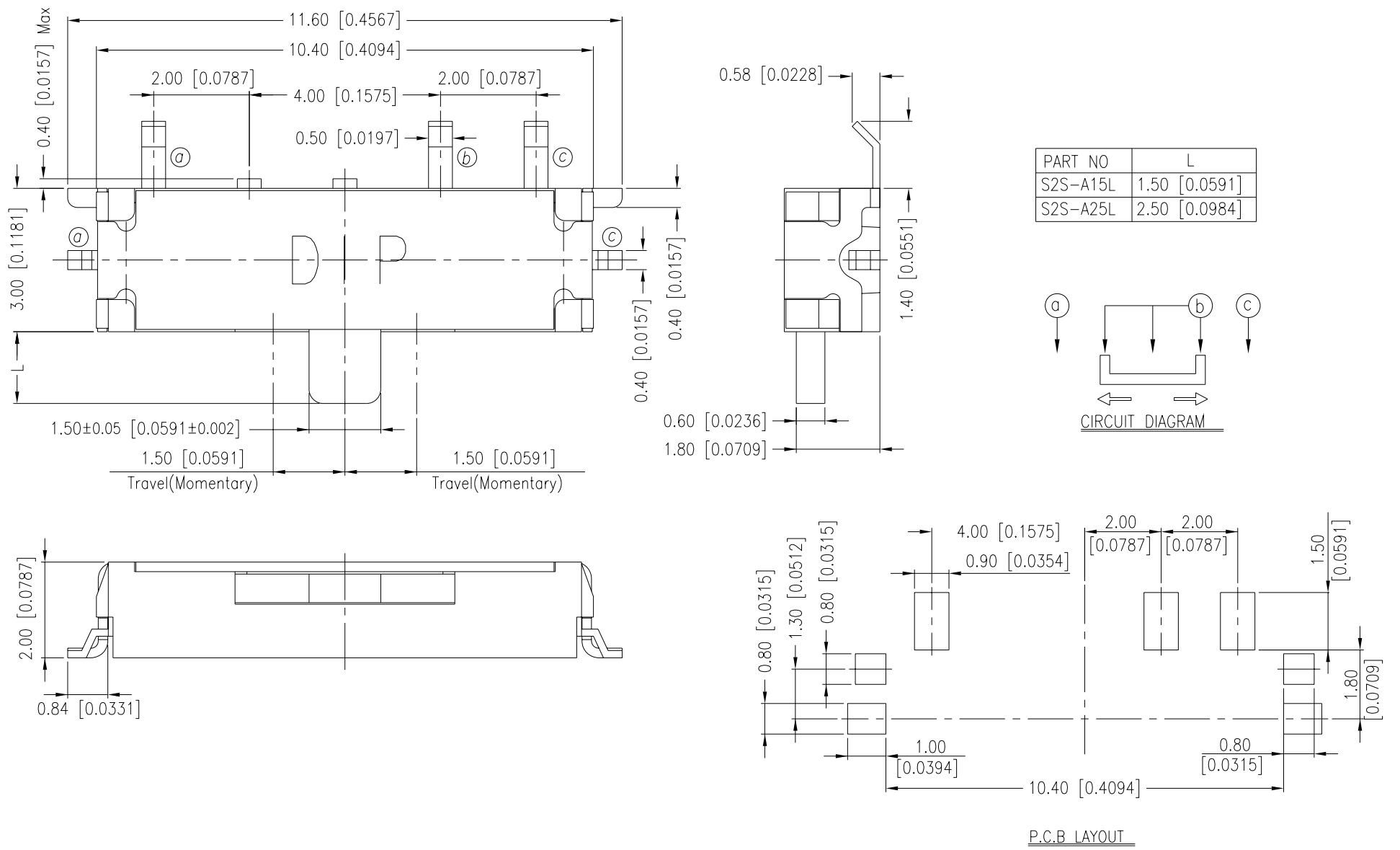
PART NO	L
S2S-A15FC	1.50 [0.0591]
S2S-A25FC	2.50 [0.0984]



P.C.B. LAYOUT

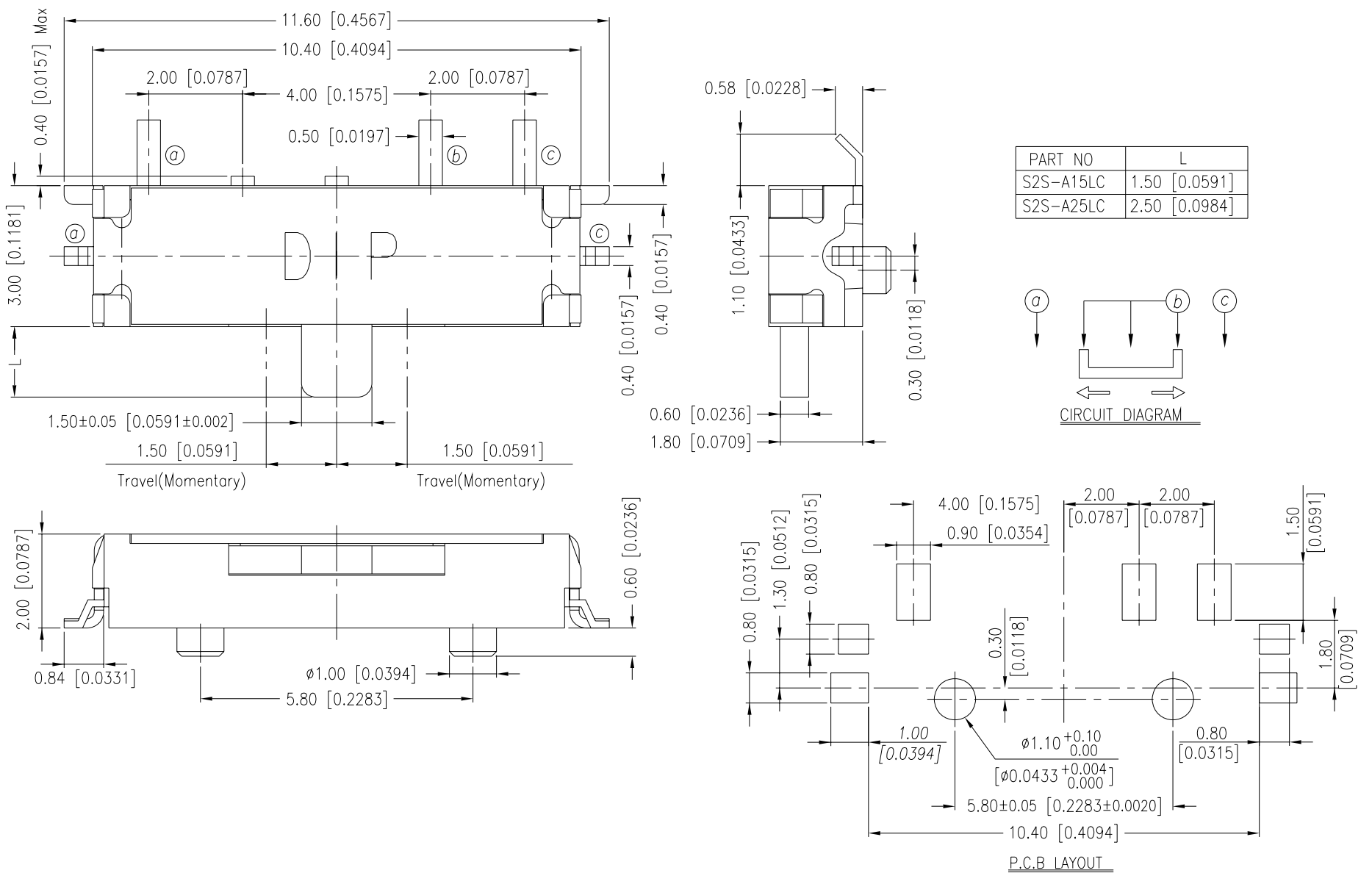
General Tolerance : ±0.2mm

S2S-AL



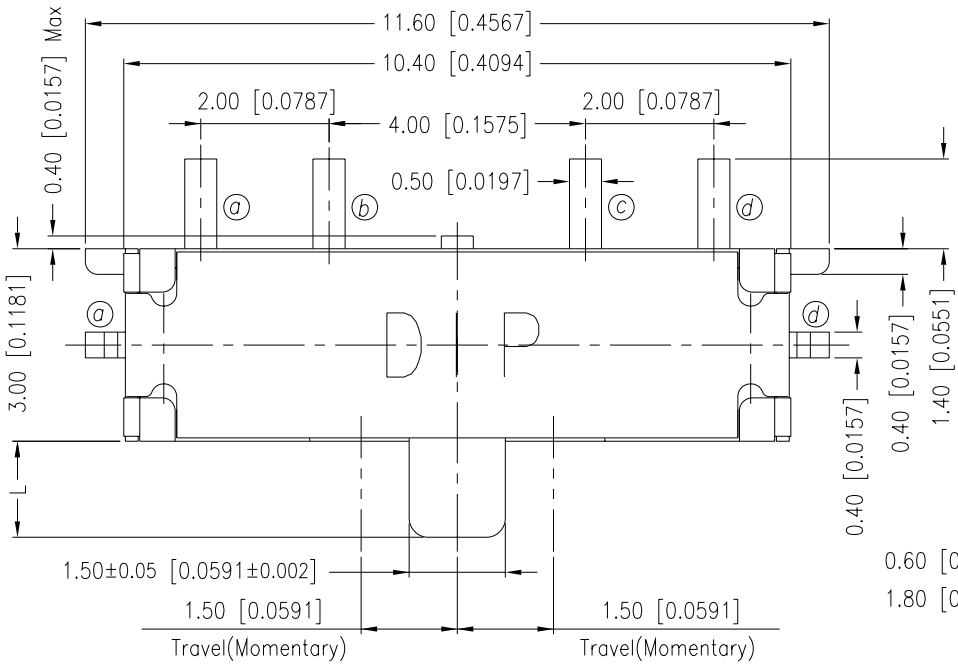
General Tolerance : ±0.2mm

S2S-ALC

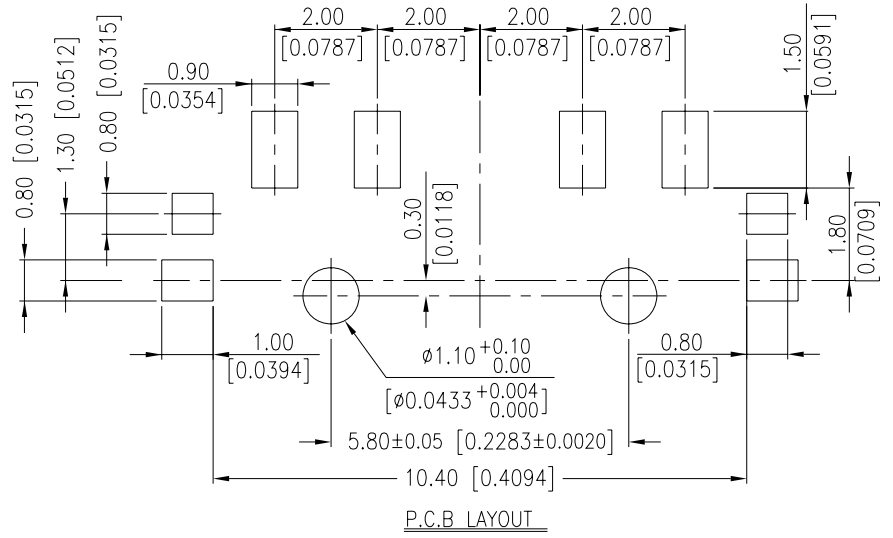
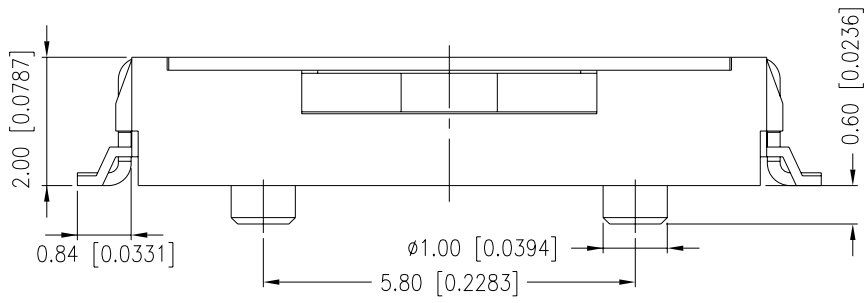
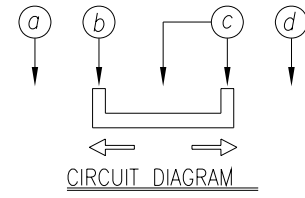


General Tolerance : ±0.2mm

S2S-BFC

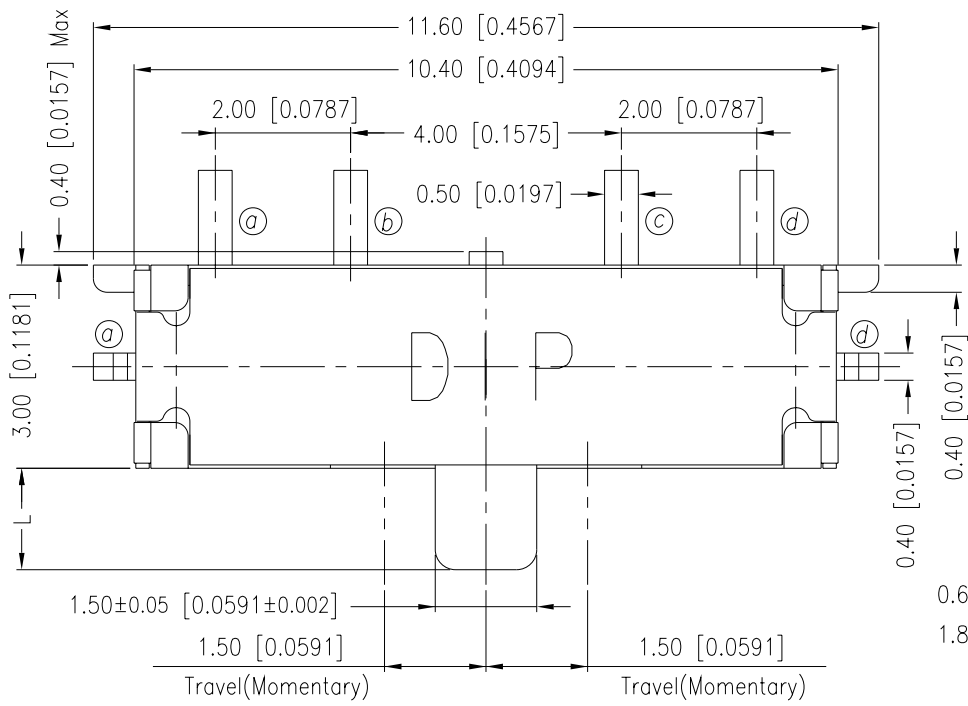


PART NO	L
S2S-B15FC	1.50 [0.0591]
S2S-B25FC	2.50 [0.0984]

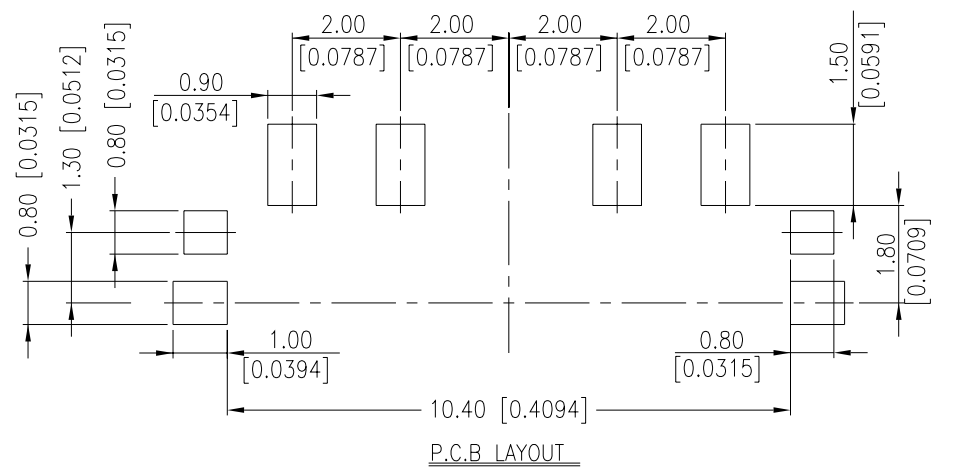
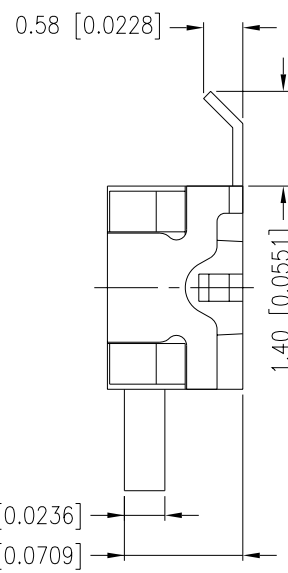
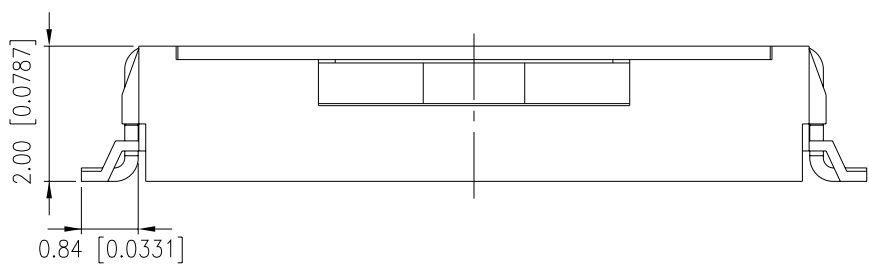
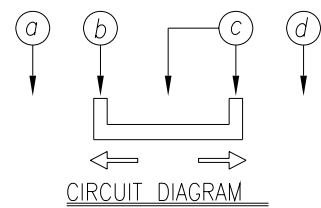


General Tolerance : $\pm 0.2\text{mm}$

S2S-BL



PART NO	L
S2S-B15L	1.50 [0.0591]
S2S-B25L	2.50 [0.0984]



General Tolerance : $\pm 0.2\text{mm}$

HOW TO ORDER

S 2 S - □ □ □ □ □ - □ - □

Package :
T/R = Tape & Reel

V=RoHS & Lead Free Solderable

Q=Halogen Free

□ = Without Post

C = Post

Terminal Type :

L = J Bend

F = Flat

Actuator Length:

15 = 1.5mm

25 = 2.5mm

Poles-Positions :

A = 1P2T

B = 1P3T

2S = Double-Side Recoil

S = Slide Switch

SPECIFICATION

△MECHANICAL

Operation Force : 100±50gf

Travel: 1.50±0.2mm

Operation Temperature Range:-30°C to +80°C

Storage Temperature Range:-40°C to +90°C

△ELECTRICAL

Electrical Life: 50,000 cycles

Non Switching Rating : 0.2mA, 5V DC

Switching Rating : 300mA, 4V DC

Contact Resistance : 70mΩ max

Insulation Resistance : 100MΩ min. at 250 VDC

Dielectric Strength : 100 VAC/1 minute

Circuit : 1P2T,1P3T

MATERIAL

△COVER : Nickel Silver

△CONTACT DISC : Alloy Copper, with gold cladding

△TERMINAL : Phosphor Bronze, with silver cladding

△BASE : UL94V-0 Nylon High-Temp Thermoplastic

Color : Black<1P2T>,Brown<1P3T>

△STEM : UL94V-0 Nylon High-Temp Thermoplastic

Color : Black

SOLDERING PROCESS

△HAND SOLDERING : Use a soldering iron of 30 watts, △Temperature Profile :

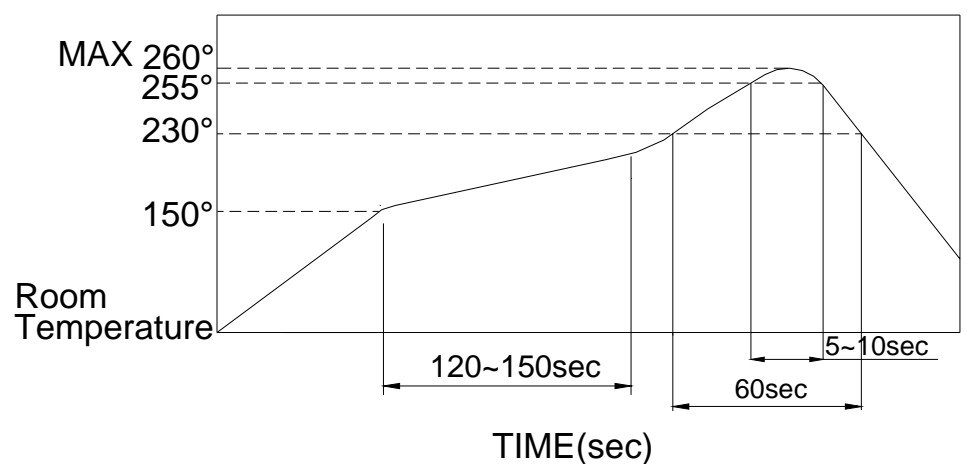
controlled at 350°C approximately 5 seconds while

Applying solder.

△REFLOW SOLDERING : When applying reflow soldering,

the peak temperature or the reflow oven should be set

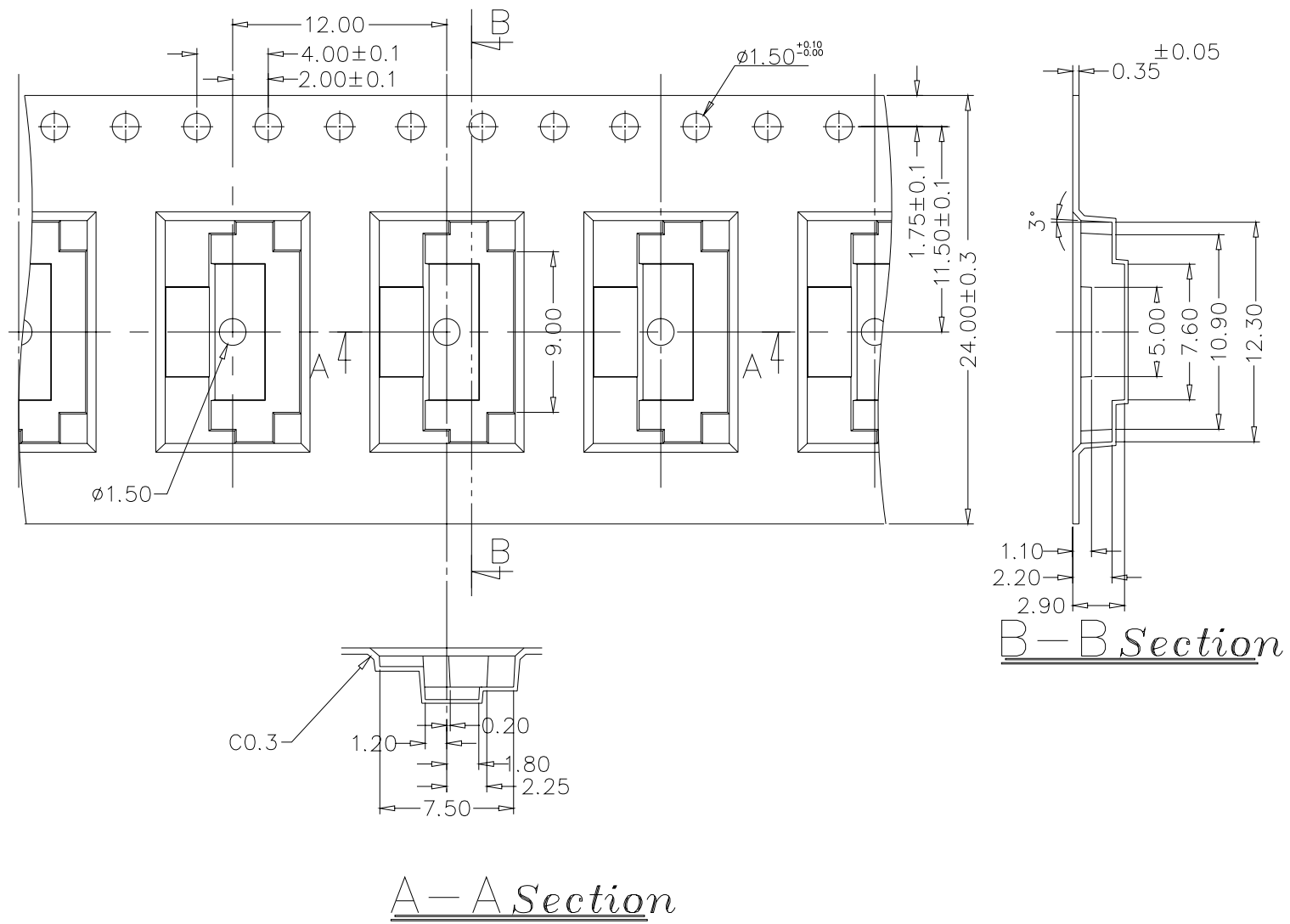
to 260°C max.



PACKING

REEL

Part Number	Number Per Tube	Number Per Reel
S2S-15AF	-	2000
S2S-25AF	-	2000
S2S-15AFC	-	2000
S2S-25AFC	-	2000
S2S-15AL	-	2000
S2S-25AL	-	2000
S2S-15ALC	-	2000
S2S-25ALC	-	2000
S2S-15BF	-	2000
S2S-25BF	-	2000
S2S-15BFC	-	2000
S2S-25BFC	-	2000
S2S-15BL	-	2000
S2S-25BL	-	2000
S2S-15BLC	-	2000
S2S-25BLC	-	2000



General Tolerance : ± 0.1 mm