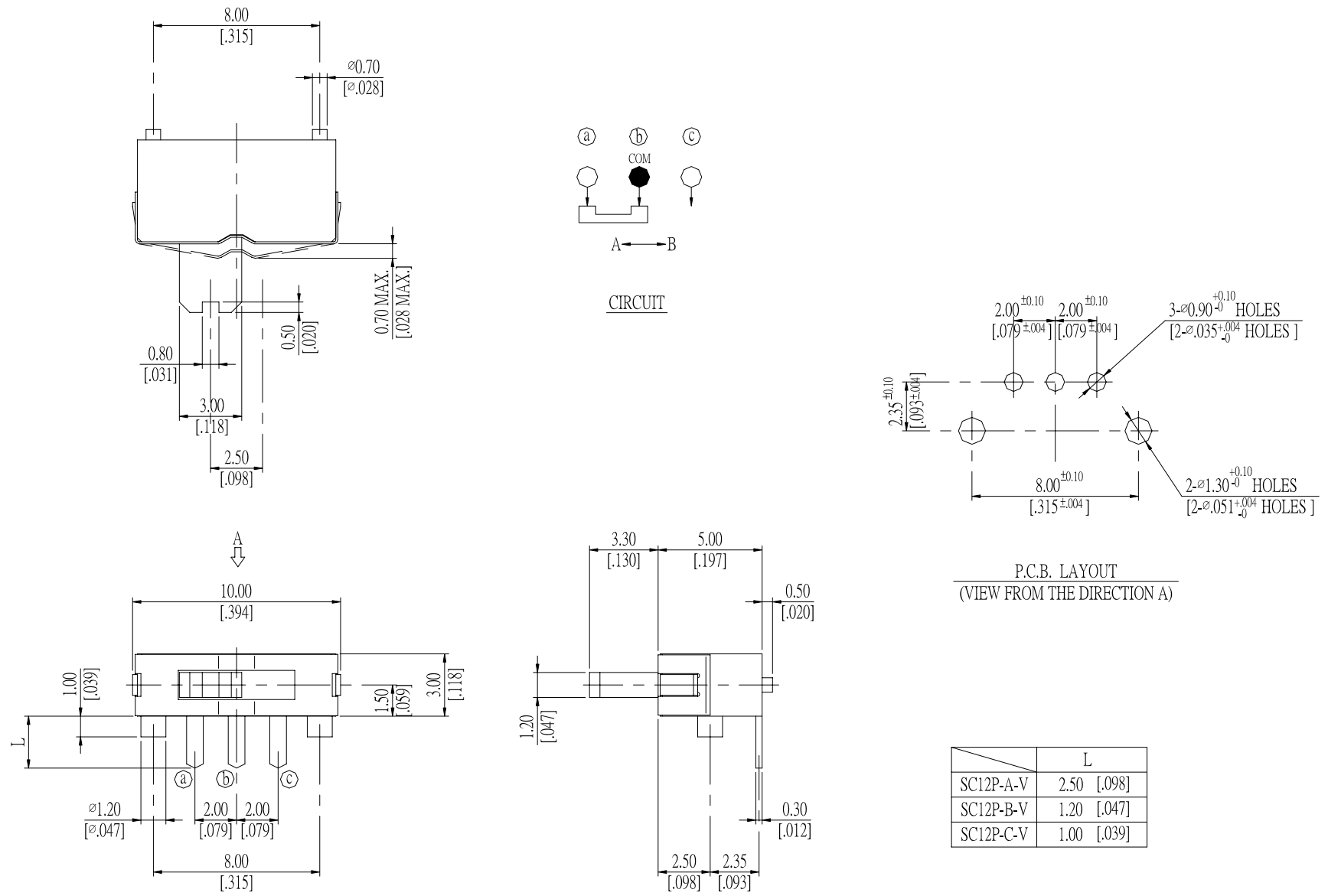


SC12 SERIES



DIMENSION

SC12P



General Tolerance : $\pm 0.2\text{mm}$

HOW TO ORDER

SC 12 P □ - V - □

Package :
T/R=Tape & Reel

Lead Free

Terminal Length
A=2.5mm
B=1.2mm
C=1.0mm

P=With Post

Poles-Positions :
12=1P2T

Slide Switch

SPECIFICATION

△MECHANICAL

Operation Force : 100~300gf max.
 Stroke : 0.25±0.3mm
 Operation Temperature Range : -10°C to +60°C
 Storage Temperature Range : -20°C to +75°C

△ELECTRICAL

Electrical Life : 10,000 cycles
 Rating : 0.3mA, 10V DC
 Contact Resistance : 20mΩ max.
 Insulation Resistance : 100MΩ min.
 Dielectric Strength : 500V AC/1 minute
 Circuit : 1P2T

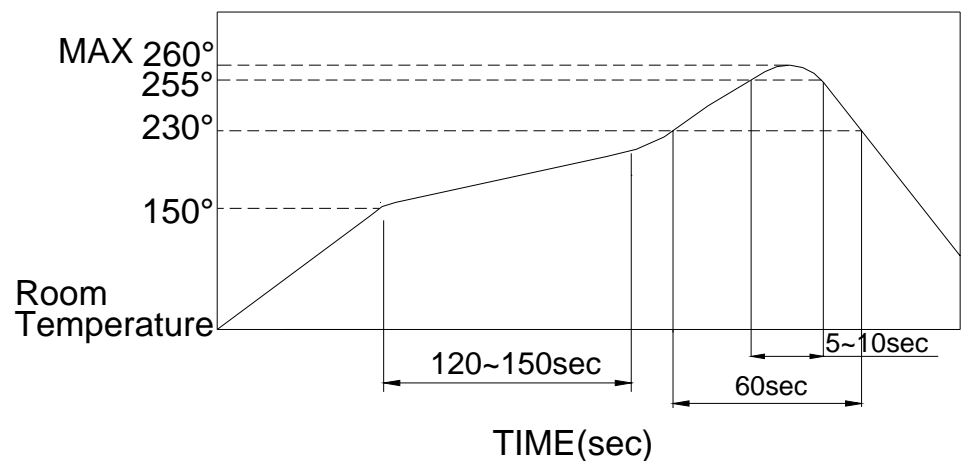
MATERIAL

△STEM : NYLON UL94V-0 High-Temp Thermoplastic
 Color : Black
 △COVER : Nickel silver
 △CONTACT : Phosphor Bronze, with Silver plating
 △BASE : LCP High-Temp Thermoplastic
 Color : Black
 △TERMINAL : Brass, with Silver plating

SOLDERING PROCESS

△HAND SOLDERING : Use a soldering iron of 30 watts, Controlled at 350°C approximately 5 seconds while applying solder.
 △REFLOW SOLDERING : When applying reflow soldering, the peak temperature or the reflow oven should be set to 260°C max.

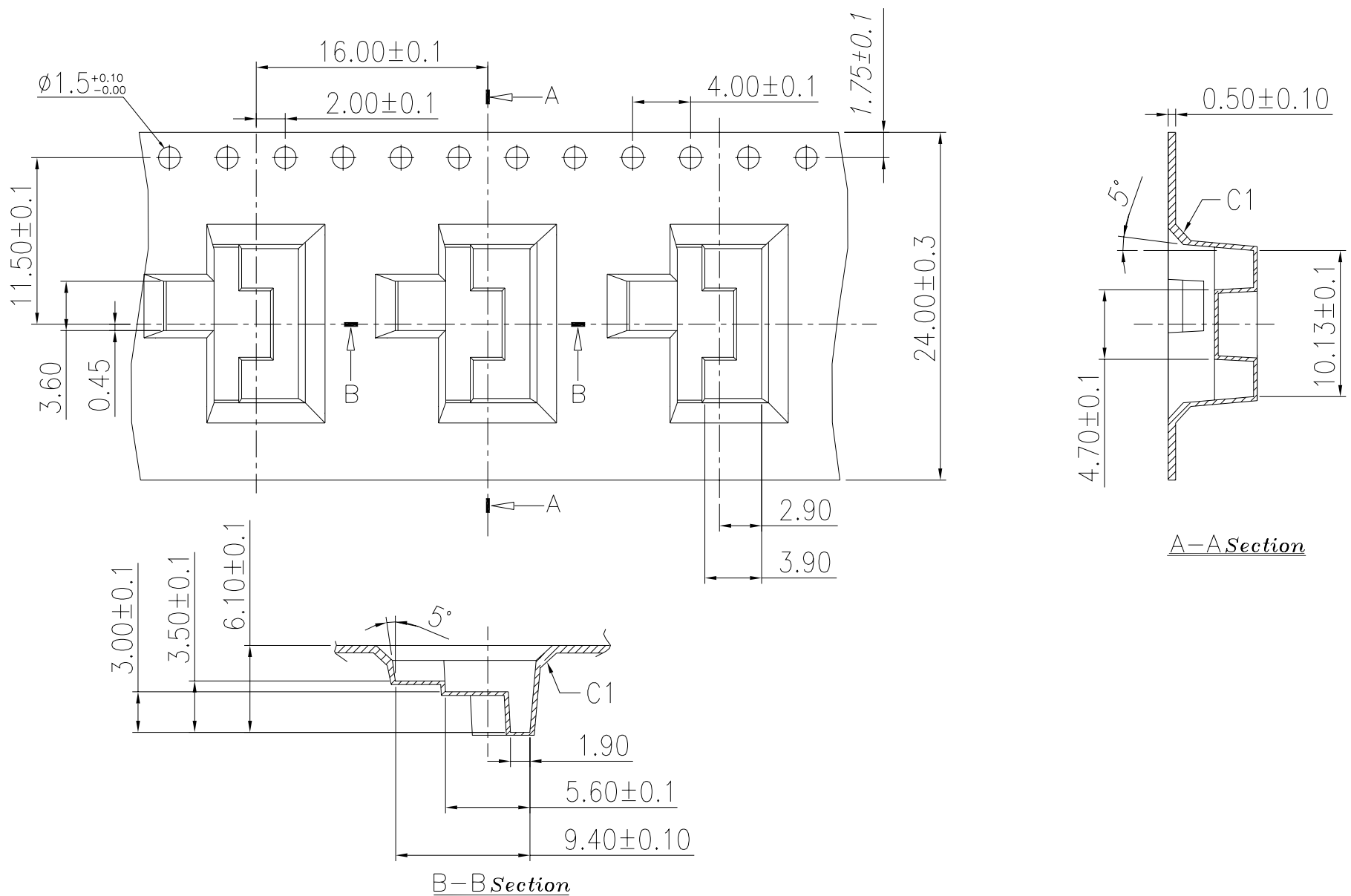
△Temperature Profile :



PACKING

REEL

Part Number	Number Per Tube	Number Per Reel
SC12P	-	800



General Tolerance : ±0.1mm