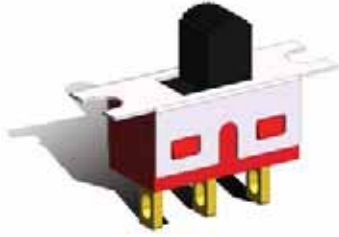


# 5M Series

## Slide Switches



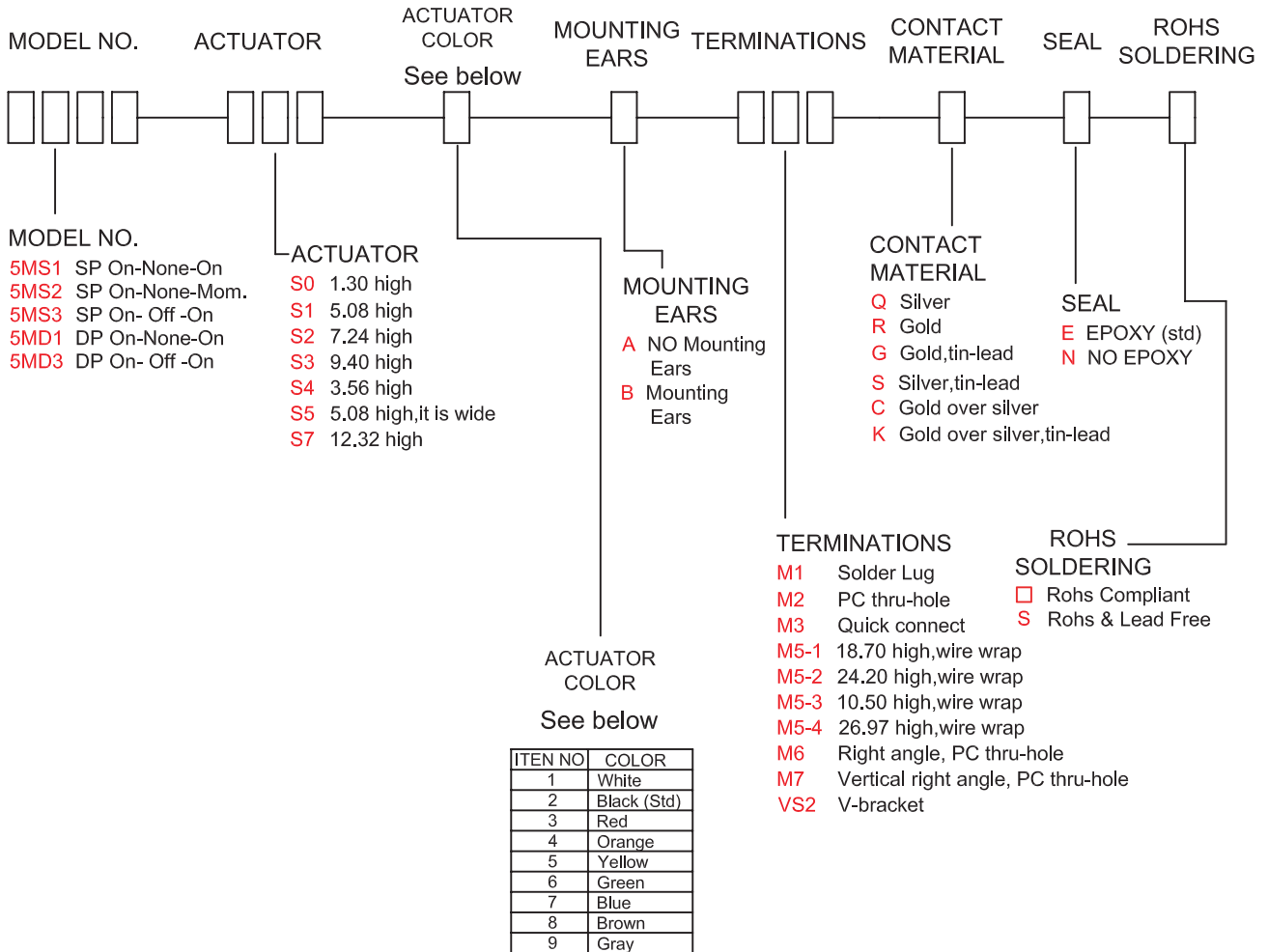
### SPECIFICATIONS

**CONTACT RATING:** Dependent upon contact material.  
**MECHANICAL LIFE:** 30,000 make-and-break cycles.  
**CONTACT RESISTANCE:** 10mΩ max. initial @ 2-4VDC  
 100mA for both silver and gold plated contacts.  
**INSULATION RESISTANCE:** 1,000MΩ min.  
**DIELECTRIC STRENGTH:** 1,000 V RMS@sea level.  
**OPERATING TEMPERATURE:** -30°C to 85°C.

### MATERIALS

**CASE** - Diallyl phthalate (DAP)(UL94V-0)  
**HOUSING** - Stainless Steel  
**ACTUATOR** - Nylon, black std.  
**CONTACT** - Silver or gold plated.  
**TERMINAL SEAL** - Epoxy. (See Page 93)

## HOW TO ORDER



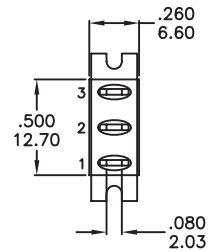
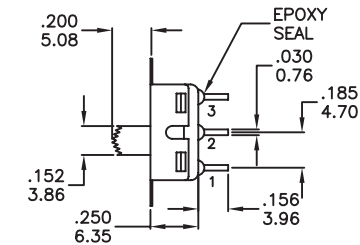
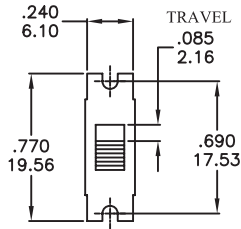
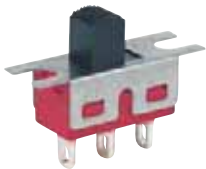
5M Slide Switches

### SWITCH FUNCTION

NO. POLES	UL/CSA MODEL NO.	MODEL NO.	SWITCH FUNCTION			CONNECTED TERMINALS / SCHEMATIC		
			POS.1	POS.2	POS.3	POS.1	POS.2	POS.3
SP	Q1511	5MS1	ON	NONE	ON	2-1 	OPEN	2-3 
	Q1512	5MS2	ON	NONE	MOM			
	Q1513	5MS3	ON	OFF	ON			
DP	Q1521	5MD1	ON	NONE	ON	2-1,5-4 	OPEN	2-3,5-6 
	Q1523	5MD3	ON	OFF	ON			

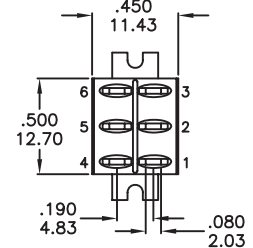
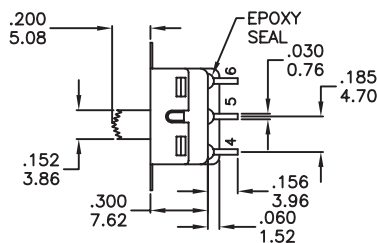
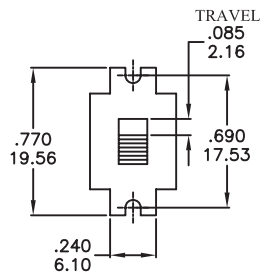
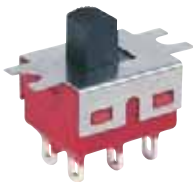
MOM=MOMENTARY

### POLE OPTIONS



SPDT

Part No. Shown : 5MS1S12BM1QE

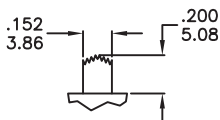


DPDT

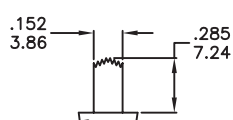
Part No. Shown : 5MD1S12BM1QE

### ACTUATOR OPTIONS

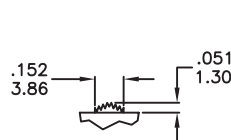
S1 STD



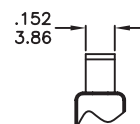
S2



S0

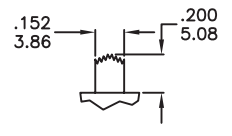


FRONT



For S0,S1,S2,  
S3,S4,S7

S5

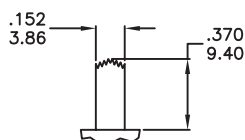


FRONT

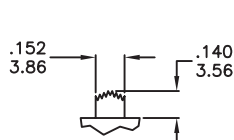


For DPDT ONLY

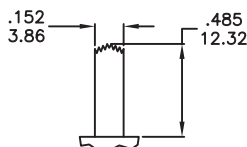
S3



S4



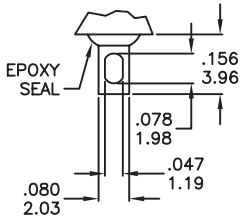
S7



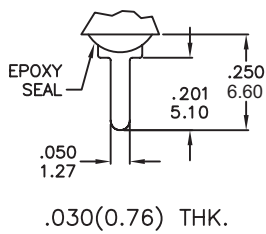
\* Subtract .014(0.36) from  
Actuator height for M6, M7  
P.C. MOUNTING OPTION.

## TERMINATION OPTIONS

### M1 SOLDER LUG

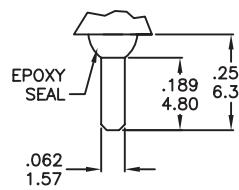


### M2 PC THRU-HOLE



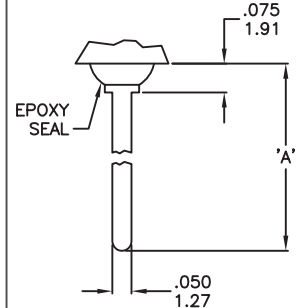
.030(0.76) THK.

### M3 QUICK CONNECT



.030(0.76) THK.

### M5 WIRE WRAP



THK .030(0.76)

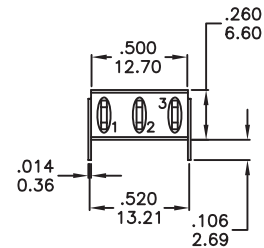
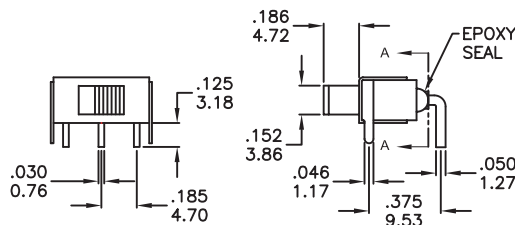
### OTHER TERMINATION OPTIONS

- M6 RIGHT ANGLE P.C. MOUNT
- M7 RIGHT ANGLE P.C. MOUNT
- VS2 VERTICAL BRACKET P.C. MOUNT

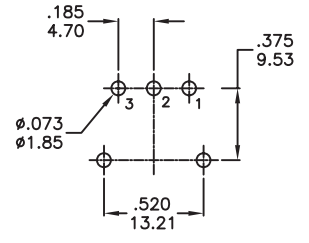
Mating Quick connector  
Amp P\N 6099-1

OPTION CODE	DIM. 'A'
M5-1	.736(18.70)
M5-2	.953(24.20)
M5-3	.415(10.55)
M5-4	1.062(26.97)

### M6



### P.C. MOUNTING

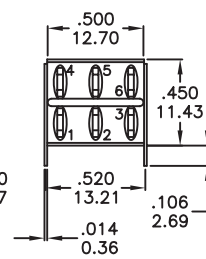
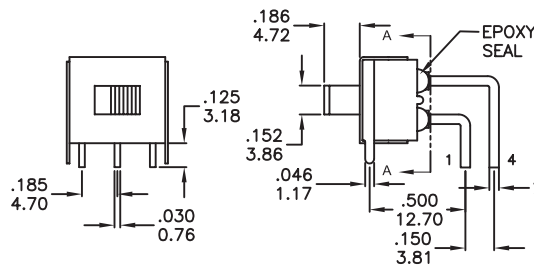


SECTION A-A  
TERM.NOS.FOR  
REFERENCE ONLY

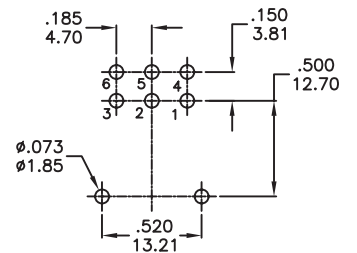
### SPDT

Part No. Shown : 5MS1S12AM6QE

### M6



### P.C. MOUNTING



SECTION A-A  
TERM.NOS.FOR  
REFERENCE ONLY

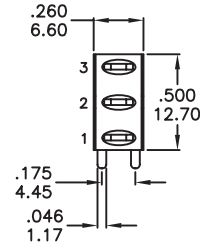
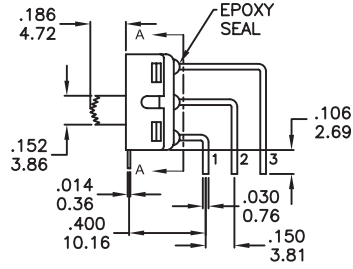
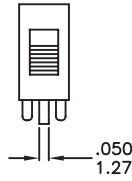
### DPDT

Part No. Shown : 5MD1S12AM6QE

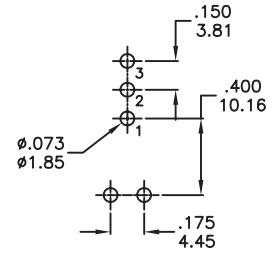
# 5M Series

## Slide Switches

M7



P.C. MOUNTING

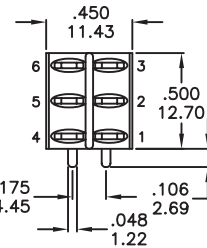
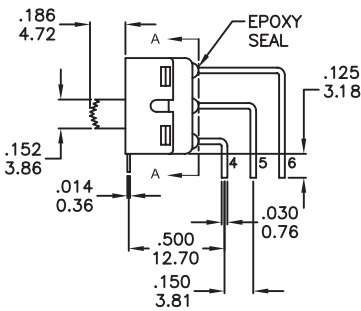
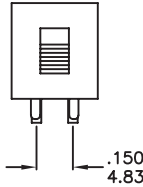
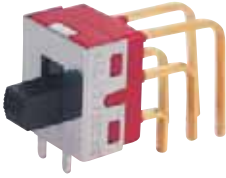


SECTION A-A  
TERM.NOS.FOR  
REFERENCE ONLY

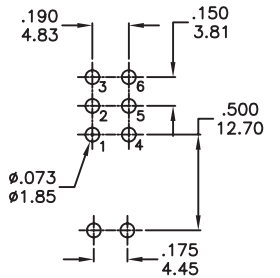
SPDT

Part No. Shown : 5MS1S12AM7QE

M7



P.C. MOUNTING

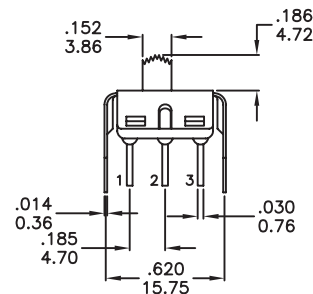
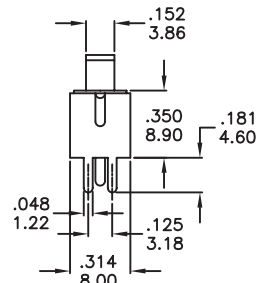
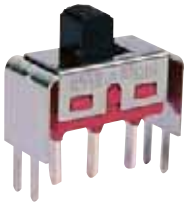


SECTION A-A  
TERM.NOS.FOR  
REFERENCE ONLY

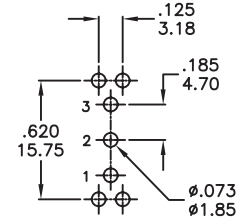
DPDT

Part No. Shown : 5MD1S12AM7RE

VS2



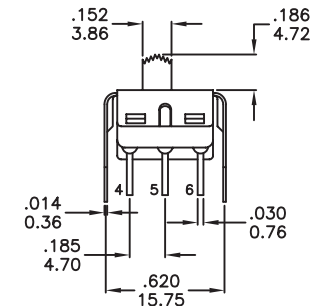
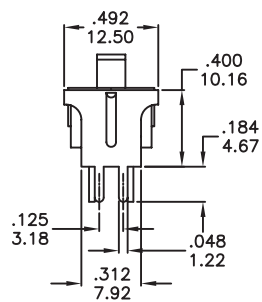
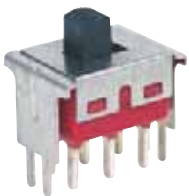
P.C. MOUNTING



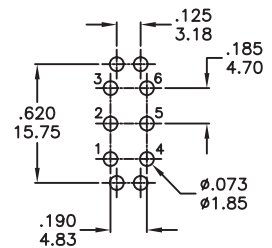
SPDT

Part No. Shown : 5MS1S12AVS2QE

VS2



P.C. MOUNTING

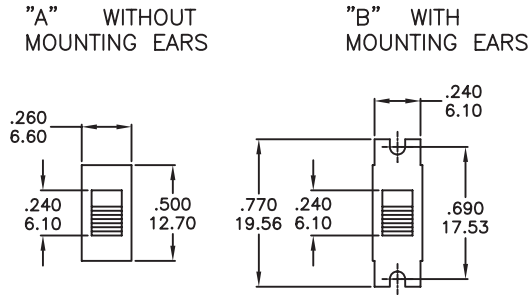


DPDT

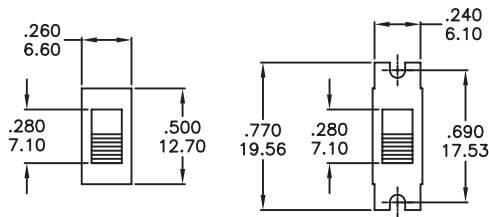
Part No. Shown : 5MD1S12AVS2QE

### MOUNTING EARS / PANEL MOUNTING

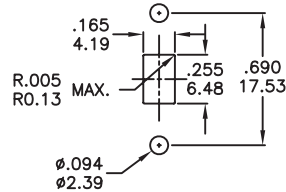
#### MOUNTING EARS



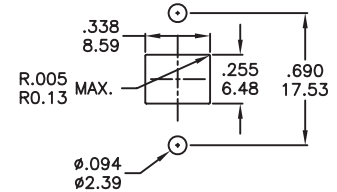
#### THREE POSITIONS ONLY



#### PANEL MOUNTING

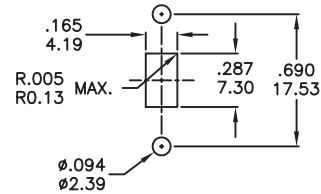


FOR  
S0,S1,S2,S3,S4,S7



FOR S5 ONLY

#### THREE POSITIONS ONLY



FOR  
S0,S1,S2,S3,S4,S7

### CONTACT MATERIAL OPTIONS

	CONTACT MATERIAL	TERMINATION RATING	RATINGS
<b>Q</b>	<b>Silver</b>	<b>Q</b> = Silver	5 Amps with resistant load @ 120VAC or 28VDC 2 Amps with resistant load @ 250VAC
<b>S</b>		<b>S</b> = Silver,pure - tin	
<b>C</b>	<b>Gold over Silver</b>	<b>C</b> = Gold over silver	
<b>K</b>		<b>K</b> = Gold over silver,pure - tin	
<b>R</b>	<b>Gold</b>	<b>R</b> = Gold	0.4 Volt-Amps(VA)max. @ 20V max. (AC or DC)
<b>G</b>		<b>G</b> = Gold,pure - tin	



### SOLDERING PROCESSES

**MANUAL SOLDERING** : Use soldering iron of 30 watts, controlled at 350°C approximately 5 seconds while applying solder.

**WAVE SOLDERING** : Recommended Soldering Temperature: 260±5°C  
Duration of Solder Immersion: 5 ±1 seconds  
(PCB is 1.6mm in thickness)

**SOLDERING** : Vapor phase

### Temperature Profile

Zone	Room temperature	Time ( Sec )
Pre-heat ( A )	150°C	Min 120s
Soak ( B )	180°C~200°C	Min 150s
Peak ( C )	200°C~235°C	Min 30s
Peak ( D )	235°C~260°C	Min 40s
Peak ( E )	260°C	Max 10s

